

COSPOLICH

Shipboard Modular Undercounter Refrigerator Technical Manual

Installation, Operation, and Maintenance Instructions
Serial Numbers: 1238-20 to Present

UCR5 Series

UCR5-2M-S-MLR
UCR5-2M-SN-MLR
UCR5-2M-SNL-MLR



UCR10 Series

UCR10-2M-S-MLR
UCR10-2M-SN-MLR
UCR10-2M-SNL-MLR



UCR15 Series

UCR15-2M-S-MLR
UCR15-2M-SN-MLR
UCR15-2M-SNL-MLR



UCR20 Series

UCR20-2M-S-MLR
UCR20-2M-SN-MLR
UCR20-2M-SNL-MLR



UCR30 Series

UCR30-2M-S-MLR
UCR30-2M-SN-MLR
UCR30-2M-SNL-MLR



Table of Contents

List of Illustrations	3	6.2.31 Shelves	33
List of Tables	4	6.2.32 Shelf Clip	33
Glossary	4	6.2.33 Shelf Standard	33
Chapter 1 General Information	5-10	6.2.34 Adjustable Leg	33
1.1 Introduction	5	6.2.35 Door Latch	34
1.2 Scope of the Manual	5	6.2.36 Door Hinge	34
1.3 Equipment Description	5	6.2.37 Latch Strike	34
1.4 Equipment Supplied	5	6.2.38 Male/Female Twist Lock Disconnects	34
Table A Leading Particulars	6	6.2.39 Magnetic Door Gasket	35
Illustration 1 General Arrangement Drawings	7-11	6.2.40 Bump-Out Front Breathing Grill	35
Chapter 2 Operation	12	6.2.41 Electronic Controller Digital Display	35
2.1 Introduction	12	6.2.42 Quick Connect Fittings	35
2.2 Controls and Indicators	12	6.2.43 High-Low Temperature Alarm	35
Table B Controls and Indicators	12	Chapter 7 Parts List	36-40
Illustration 2 Prepped Electronic Controller Assembly & Prepped Condensing Unit	13-14	7.1 Introduction	36
2.3 Start Up Procedure	15	7.2 Source Codes	36
Table C Start Up Procedure	15	Table H Source Codes	36
2.4 Shut Down Procedure for Short Term	16	Table I Parts List UCR5 Series	37
Table D Shut Down Procedure for Short Term	16	Table J Parts List UCR10 Series	38
2.5 Cleaning Instructions	16	Table K Parts List UCR15 Series	39
2.6 Preparation for an Extended Period of Inactivity	17	Table L Parts List UCR20 Series	40
Table E Shut Down for Extended Period	17	Table M Parts List UCR30 Series	41
Chapter 3 Functional Description	18	Illustrations 7.1 Prepped Condensing Unit Assembly UCR5, UCR10, UCR15 & UCR20	42
3.1 System Description	18	Illustrations 7.2 Prepped Condensing Unit Assembly UCR30	43
3.2 System Operation	18	Illustrations 7.3 Prepped Evaporator Coil Assembly UCR5, UCR10, UCR15 & UCR20	44
Chapter 4 Scheduled Maintenance	19-22	Illustrations 7.4 Prepped Condensing Unit Assembly UCR30	45
4.1 Introduction	19	Illustrations 7.5 Prepped Electronic Controller Assembly	46
4.2 Preventive Maintenance Action Index	19	Illustrations 7.6 Interior Detail	47
4.3 Preparation for Maintenance	19	Illustrations 7.9 Main Unit & Door Detail	48
4.4 Maintenance Procedures	19-22	Illustrations 7.10 Accessory Detail	49
A. Monthly Maintenance Requirements	19	Chapter 8 Installation	50
B. Bi-Monthly Maintenance Requirements	20-21	8.1 Unpacking	50
C. Annual Maintenance Requirements	21	8.2 Installation	50
D. 3-Year Maintenance Requirements	22	Chapter 9 Modular Installation	51-52
Table F Preventive Maintenance Action Index	22	9.1 Introduction	51
Chapter 5 Troubleshooting	23	9.2 Installation Skill Level	51
Table G Mechanical & Electrical	23	9.3 Tools	51
Chapter 6 Corrective Maintenance	24-42	9.4 Primary Components	51
6.1 Introduction	24	9.5 Disassembly	51
6.2 Repair & Replacement Procedures	24-42	Chapter 10 Electrical & Mechanical	53
6.2.1 Compressor	24-25	10.1 Introduction	53
6.2.2 Low Pressure Control	26	Illustration 10.1 Mechanical Piping Diagram	54
6.2.3 Thermal Expansion Valve (TXV)	26	Illustration 10.2 Electrical Schematic (Electronic Controls/Freezer)	55-56
6.2.4 Filter Dryer	26	Chapter 11 Warranty	57
6.2.5 Condenser Fan Motor	27	Appendix 1 Revision History	58
6.2.6 Condenser Fan Blade	27		
6.2.7 Axial Fan Motor	2		
6.2.8 Anti-Condensate Mullion Heater Wire	28		
6.2.9 Condenser, Cabinet, & Defrost Sensors	28		
6.2.10 Condenser	28		
6.2.11 Start Capacitor Kit	28		
6.2.12 Condensing Unit Overload	29		
6.2.13 Condensing Unit Relay	29		
6.2.14 Condensing Unit Assembly	29		
6.2.15 Prepped Evaporator Coil Assembly	30		
6.2.16 Evaporator Fan Cover	30		
6.2.17 Evaporator Fan Blade	30		
6.2.18 Evaporator Fan Motor	30		
6.2.19 Copper Tubing Wheel Assembly	31		
6.2.20 1/2" Vinyl Drain Line Tubing	31		
6.2.21 Sight Glass	31		
6.2.22 Receiver Tank	31		
6.2.23 Electronic Controller Relay	31		
6.2.24 Prepped Electronic Controller Assembly	32		
6.2.25 On/Off Toggle Switch	32		
6.2.26 Door Assembly	32		
6.2.27 Secondary Breaker Strip	32		
6.2.28 Breaker Strip Corner	32		
6.2.29 LED Light	32		
6.2.30 LED Light Driver	33		

List of Illustrations
UCR5, UCR10, UCR15 & UCR20 Series


	UCR5 SERIES		UCR10 SERIES		UCR15 SERIES		UCR20 SERIES		UCR30 SERIES	
	Il.	Pg.	Il.	Pg.	Il.	Pg.	Il.	Pg.	Il.	Pg.
GENERAL ARRANGEMENT DWG	1.1	7	1.2	8	1.3	9	1.4	10	1.5	11
PREPPED CONTROL PANEL INCLUDING LEFT & RIGHT SIDE VIEW	2.1	13	2.1	13	2.1	13	2.1	13	2.1	13
PREPPED CONDENSING UNIT INCLUDING LEFT & RIGHT SIDE VIEW	2.2A	14	2.2A	14	2.2A	14	2.2A	14	2.2B	14
PREPPED CONDENSING UNIT ASSEMBLY	7.1	42	7.1	42	7.1	42	7.1	42	7.2	43
PREPPED EVAPORATOR COIL ASSEMBLY INCLUDING LOWER, DRAIN LINE & INTERIOR VIEW, FAN COVER & MOTOR DETAIL	7.3	44	7.3	44	7.3	44	7.3	44	7.4	45
PREPPED ELECTRONIC CONTROLLER ASSEMBLY INCLUDING FRONT & REAR VIEW	7.5	46	7.5	46	7.5	46	7.5	46	7.5	46
INTERIOR DETAIL	7.6	47	7.6	47	7.6	47	7.6	47	7.6	47
MAIN UNIT & DOOR DETAIL INCLUDING LATCH, HINGE, STRIKE	7.7	48	7.7	48	7.7	48	7.7	48	7.7	48
ACCESSORY DETAIL INCLUDING SHELVES, LEGS, ALARMS	7.8	49	7.8	49	7.8	49	7.8	49	7.8	49
MECHANICAL PIPING DIAGRAM	10.1	54	10.1	54	10.1	54	10.1	54	10.1	54
ELECTRICAL SCHEMATIC (Electronic Controls) ELECTRONIC CONTROLS FREEZER	10.21	55	10.21	55	10.21	55	10.21	55	10.21	55
ELECTRICAL SCHEMATIC (Electronic Controls) ELECTRONIC CONTROLS FREEZER	10.22	56	10.22	56	10.22	56	10.22	56	10.22	56

Il.—Illustration number
Pg.—Page Number

List of Tables

Table	Title	Page
A.	Leading Particulars	6
B.	Controls and Indicators	12
C.	Start-Up Procedure	15
D.	Shut Down Procedure for Short Term	16
E.	Shut Down Procedure for Extended Period	17
F.	Preventive Maintenance Action Index	22
G.	Mechanical and Electrical Troubleshooting Guide	23
H.	Source Codes	36
I.	Parts List - UCR5 Series	37
J.	Parts List - UCR10 Series	38
K.	Parts List - UCR15 Series	39
L.	Parts List - UCR20 Series	40
M.	Parts List - UCR30 Series	41

Glossary

	
	Indicates to the end user instructions or preventative measures that should be taken to avoid damage to equipment or injury to personnel. This is meant to draw attention to the notation for the benefit of the end user.
Note:	A notation to the end user that indicates additional instructions that may be useful during servicing or operation of the equipment.
Caution:	A notation to the end user advising them to exercise additional caution while performing the specific task.
Warning:	A notation to the end user advising of potential dangerous or harmful consequences and/or conditions.

Chapter 1—General Information

1.1 Introduction

This technical manual provides information on the installation, operation, maintenance, and inspection of this unit manufactured by **Cospolich Inc.**, Destrehan, Louisiana. A complete parts breakdown is provided in Chapter 7.

1.2 Scope of the Manual

This technical manual provides information for installation, operating, preventative maintenance, and service instructions, including applicable drawings and figures of the equipment.

1.3 Equipment Description

The unit consists of the following parts:

- A. Storage Compartment— The storage compartment is clear storage area. Included in this area are the adjustable shelves.
- B. Door— Access to the storage compartment is through a hinge-mounted door.
- C. Condensing Unit & Controls Compartment— The condensing unit and controls compartment is located below the storage compartment of the cabinet. Access to this compartment is through an removable grill on the front left of the cabinet.
- D. Evaporator Coil Assembly— The evaporator coil assembly is located in the storage compartment and is responsible for distributing the cold air associated with the refrigeration system.
- E. Cabinet— The cabinet is the enclosure in which all of the above items are housed.

1.4 Equipment Supplied

The unit is shipped from the factory fully assembled, palletized and crated to minimize the possibility of damage in shipping and storage.

Table A – Leading Particulars

MANUFACTURER:	Cospolich Inc., Destrehan, Louisiana 70047		
TYPE:	Marine Shipboard Modular Freezer Unit		
MODEL:	UCR5-2M-S-MLR	UCR5-2M-SN-MLR	UCR5-2M-SNL-MLR
	(S/N's: 1238-20 to Present)		
PURPOSE:	Storage of Refrigerated Perishables		
ELECTRICAL REQUIREMENTS:	Power Supply	115 Volt AC, 60 Hz, 1 Phase	
	Amp draw	RLA: 5.1 Amps Max Fuse: 15 Amps	
REFRIGERANT/CHARGE	404A / 1 lb., 6 oz.		
DRAIN:	Not Required		
DIMENSIONS:	40" WIDE X 25" ACTUAL CABINET DEPTH X 27.5" HIGH Shipping Weight: 355 lbs. Operating Weight: 246 lbs.		

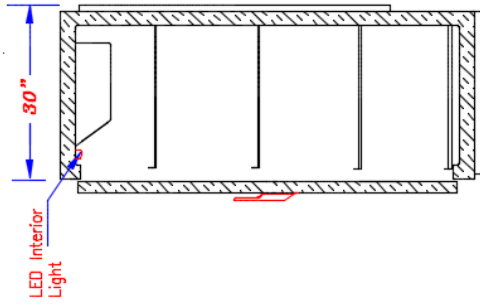
MODEL:	UCR10-2M-S-MLR	UCR10-2M-SN-MLR	UCR10-2M-SNL-MLR
	(S/N's: 1647-20 to Present)		
PURPOSE:	Storage of Refrigerated Perishables		
ELECTRICAL REQUIREMENTS:	Power Supply	115 Volt AC, 60 Hz, 1 Phase	
	Amp draw	RLA: 5.1 Amps Max Fuse: 15 Amps	
REFRIGERANT/CHARGE	404A / 1 lb., 6 oz.		
DRAIN:	Not Required		
DIMENSIONS:	49" WIDE X 25" ACTUAL CABINET DEPTH X 27.5" HIGH Shipping Weight: 430 lbs. Operating Weight: 400 lbs.		

MODEL:	UCR15-2M-S-MLR	UCR15-2M-SN-MLR	UCR15-2M-SNL-MLR
	(S/N's: 1555-20 to Present)		
PURPOSE:	Storage of Refrigerated Perishables		
ELECTRICAL REQUIREMENTS:	Power Supply	115 Volt AC, 60 Hz, 1 Phase	
	Amp draw	RLA: 5.1 Amps Max Fuse: 15 Amps	
REFRIGERANT/CHARGE	404A / 1 lb., 6 oz.		
DRAIN:	Not Required		
DIMENSIONS:	66" WIDE X 25" ACTUAL CABINET DEPTH X 27.5" HIGH Shipping Weight: 525 lbs. Operating Weight: 500 lbs.		

MODEL:	UCR20-2M-S-MLR	UCR20-2M-SN-MLR	UCR20-2M-SNL-MLR
	(S/N's: 1596-20 to Present)		
PURPOSE:	Storage of Refrigerated Perishables		
ELECTRICAL REQUIREMENTS:	Power Supply	115 Volt AC, 60 Hz, 1 Phase	
	Amp draw	RLA: 5.1 Amps Max Fuse: 15 Amps	
REFRIGERANT/CHARGE	404A / 1 lb., 6 oz.		
DRAIN:	Not Required		
DIMENSIONS:	84" WIDE X 25" ACTUAL CABINET DEPTH X 27.5" HIGH Shipping Weight: 614 lbs. Operating Weight: 575 lbs.		

MODEL:	UCR30-2M-S-MLR	UCR30-2M-SN-MLR	UCR30-2M-SNL-MLR
	(S/N's: 2066-20 to Present)		
PURPOSE:	Storage of Refrigerated Perishables		
ELECTRICAL REQUIREMENTS:	Power Supply	115 Volt AC, 60 Hz, 1 Phase	
	Amp draw	RLA: 7.8 Amps Max Fuse: 15 Amps	
REFRIGERANT/CHARGE	404A / 2 lbs., 3 oz.		
DRAIN:	Not Required		
DIMENSIONS:	115" WIDE X 25" ACTUAL CABINET DEPTH X 27.5" HIGH Shipping Weight: 820 lbs. Operating Weight: 775 lbs.		

Illustration 1.1—General Arrangement Drawing —UCR5 Series **UCR5-2M-S-MLR, UCR5-2M-SN-MLR, UCR5-2M-SNL-MLR**



VERTICAL SECTION

MODELS: F41-2M-ADS-MLR F41-2M-ADS
F41-2M-SN-MLR F41-2M-SN

SPECIFICATION

DIMENSIONS: Width 51" Depth 30" Height 71.75"

FINISH: Exterior (Optional) S.S. Interior S.S.

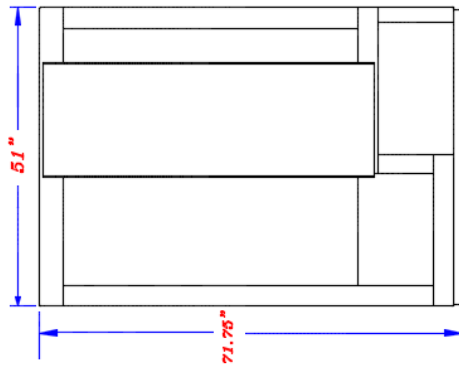
INSULATION: POLYURETHANE, FOAMED-IN-PLACE

REFRIGERATION: 404A

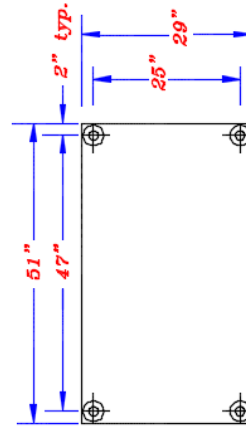
ELECTRICAL: 115VAC, 60 HZ, 1 PHASE

NOTES:
ELECTRONIC CONTROLS
1 EA 18" LED INTERIOR LIGHT: (LEDLITR35)
CONDENSING UNIT SLIDE ASSEMBLY INCLUDED: (RVCUASSY08)
FRONT-BREATHING GRILL ASSEMBLY INCLUDED: (CR06-FB-KC/REV. 001)
ADJUSTABLE LEGS OPTIONAL: (HLEG03), (HLEG02)
1" REAR TUBING COVER (1 EA)
4" S/S FOUNDATION OPTIONAL: (PFSF41)

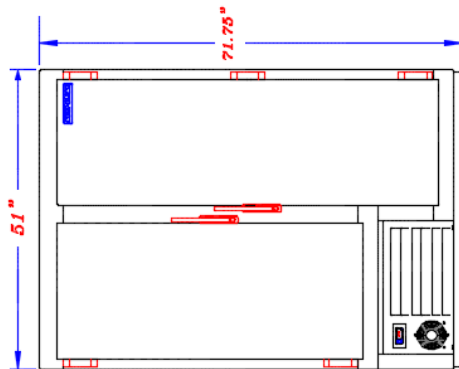
REVISIONS:
'A'-ADDED FRONT-BREATHING GRILL, LED LIGHT, REVISED HEIGHT FROM 72" TO 71.75", SINGLE 1" REAR TUBING COVER, 11/04/19, CLH



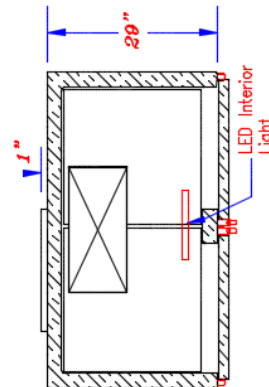
REAR ELEVATION



FOOTPRINT



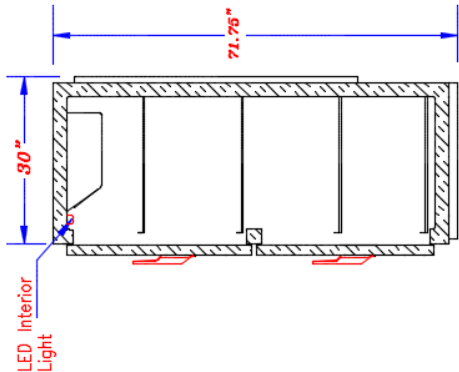
FRONT ELEVATION



HORIZONTAL SECTION

ITEM 41 CU. FT. FREEZER, MODULAR	DWG #50724-3A
PROJECT PRESENTATION SALES DWG	DWN. BY CLH
DATE 11/04/19	SCALE N.T.S.
COSPOLICH, INC.	DESTREHAN, LOUISIANA

Illustration 1.2 – General Arrangement Drawing – UCR10 Series
UCR10-2M-S-MLR, UCR10-2M-SN-MLR, UCR10-2M-SNL-MLR



VERTICAL SECTION

MODELS: F50-2M-ADS-MLR F50-2M-ADS –
F50-2M-SN-MLR F50-2M-SN

SPECIFICATION

DIMENSIONS: Width 66" Depth 30" Height 71.75"

FINISH: Interior (Exposed) S.S. Interior S.S.

INSULATION: POLYURETHANE, FOAMED-IN-PLACE

REFRIGERATION: 404A REFRIGERANT

ELECTRICAL: 115VAC, 60 HZ, 1-PHASE

NOTES:

ELECTRONIC CONTROLS

ADJUSTABLE LEGS OPTIONAL: (HLEG45-PS), (HLEG66), (HLEG88)

S/S FOUNDATION OPTIONAL: (FFSP50)

CONDENSING UNIT SLIDE ASSEMBLY INCLUDED: (RWCULAS109)

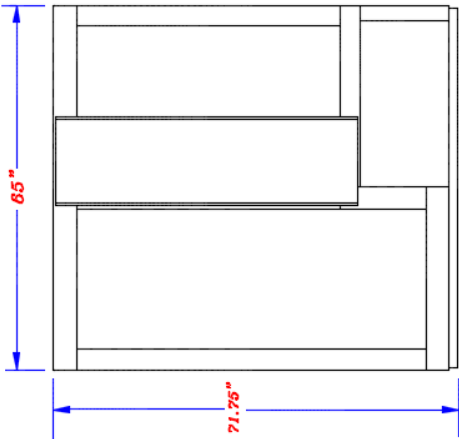
12" LED INTERIOR LIGHT INCLUDED: (LEDLIT26S)

1" REAR TUBING COVERS (2 EA)

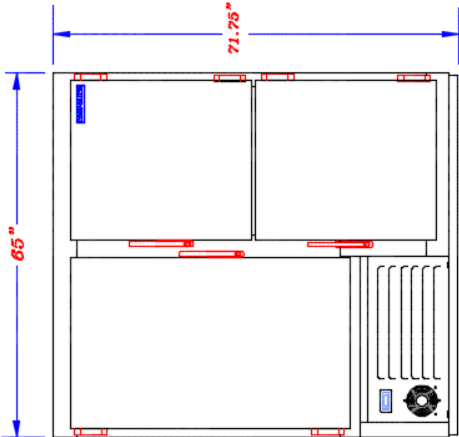
FRONT-BREATHING GRILL ASSEMBLY INCLUDED: (GR08-BC-FB)

REVISIONS:

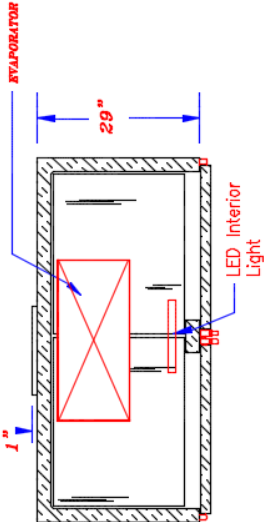
'A'-ADDED FRONT-BREATHING GRILL, LED INTERIOR LIGHT, REVISED HEIGHT FROM 72" TO 71.75", 10/31/19, CLH



REAR ELEVATION



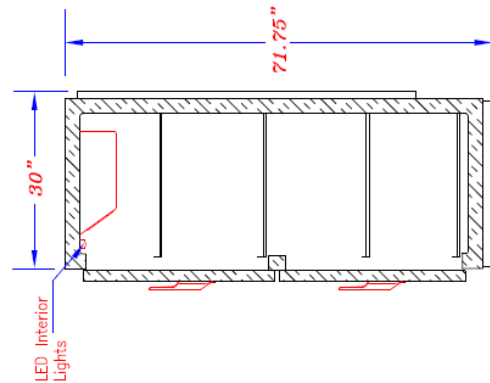
FRONT ELEVATION



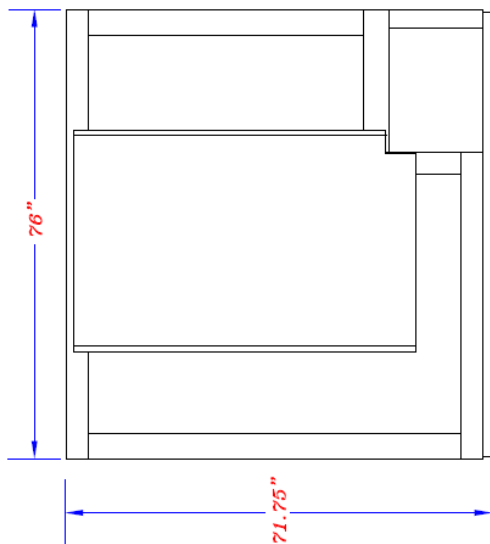
HORIZONTAL SECTION

ITEM 50 CU. FT. SHIPBOARD MODULAR FREEZER	
PROJECT PRESENTATION SALES DWG DWG # 50478-1A	
DATE 10/30/19 SCALE N.T.S. DWN. BY CLH	
COSPOLICH INC.	DESTREHAN, LA

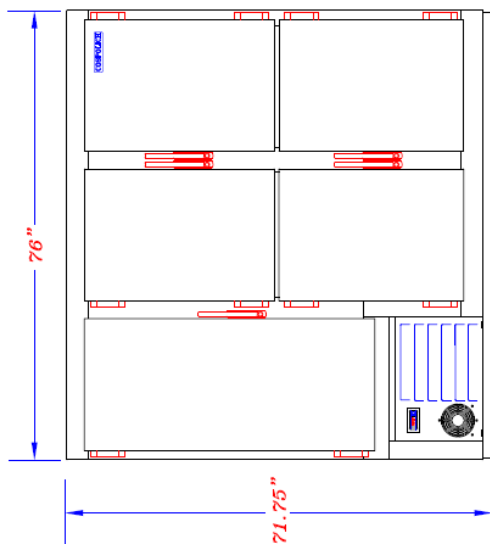
Illustration 1.3—General Arrangement Drawing—UCR15 Series
UCR15-2M-S-MLR, UCR15-2M-SN-MLR, UCR15-2M-SNL-MLR



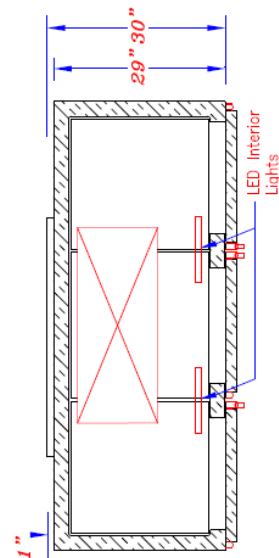
VERTICAL SECTION



REAR ELEVATION



FRONT ELEVATION



HORIZONTAL SECTION

MODELS: F65-2M-ADS F65-2M-ADS-MLR
F65-2M-SN F65-2M-SN-MLR

SPECIFICATION

DIMENSIONS: Width 76" Depth 30" Height 71.75"

FINISH: Stainless (Optional) S.S. Stainless S.S.

INSULATION: POLYURETHANE, FOAMED-IN-PLACE

REFRIGERATION: 404A REFRIGERANT

ELECTRICAL: 115VAC, 60 HZ, 1 PHASE

NOTES:

ELECTRONIC CONTROLS

2 EA 12" LED INTERIOR LIGHTS (LEDLITERS)

CONDENSING UNIT SLIDE ASSEMBLY (RPUASST09)

FRONT-BREATHING GRILL ASSEMBLY (GR10-EC-FB)(REV. 002)

2 EA 1" STAINLESS STEEL REAR TUBING COVERS (1 EA LARGE, 1 EA SMALL)

ADJUSTABLE LEGS OPTIONAL: (HLEG68, HLEG82, HLEG45-FS)

4" STAINLESS STEEL FOUNDATION OPTIONAL: (FFSF65)

REVISIONS:

"-1": ADDED ELECTRONIC CONTROLS, 01/26/16, CLH

"-1A": ADDED LED INTERIOR LIGHTS, CONDENSING UNIT SLIDE ASSEMBLY, FRONT-BREATHING GRILL, ADJUSTED DEPTH FROM 31" TO 30, HEIGHT

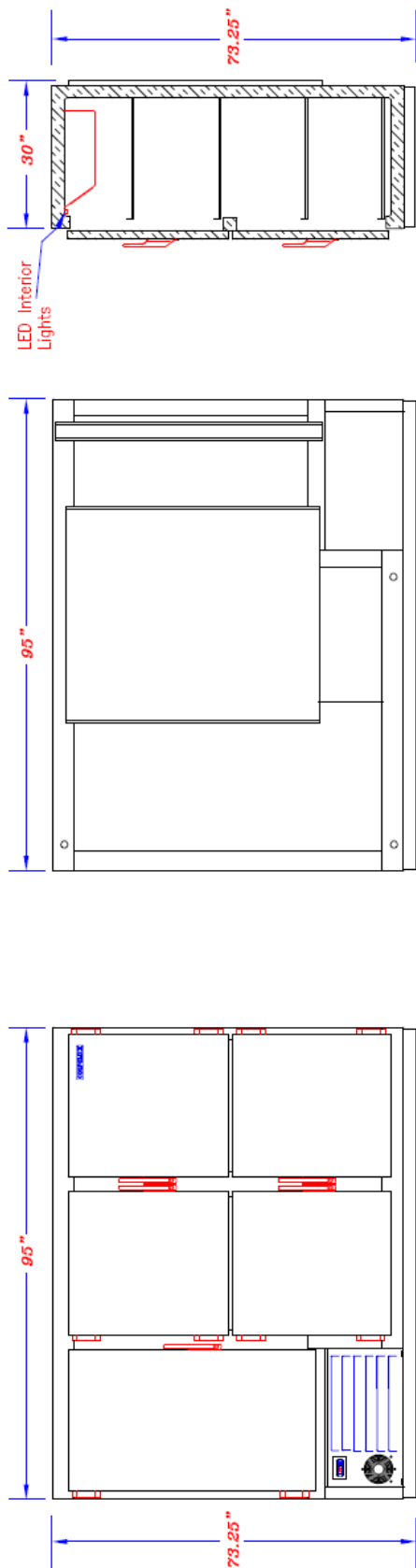
ITEM 65 CU. FT. FREEZER, MODULAR

PROJECT PRESENTATION SALES DWG DWG #50689-1A

DATE 01/24/20 SCALE N.T.S. DWN. BY CLH

COSPOLICH, INC. DESTREHAN, LOUISIANA

Illustration 1.4—General Arrangement Drawing—UCR20 Series
UCR20-2M-S-MLR, UCR20-2M-SN-MLR, UCR20-2M-SNL-MLR



FRONT ELEVATION

REAR ELEVATION

VERTICAL SECTION

MODELS: F75-2M-ADS-MLR F75-2M-ADS
 F75-2M-SN-MLR F75-2M-SN

SPECIFICATION

DIMENSIONS: Width 95" Depth 30" Height 73.25"

FINISH: Exterior (Optional) S.S. Interior S.S.

INSULATION: POLYURETHANE, FOAMED-IN-PLACE

REFRIGERATION: 404A REFRIGERANT

ELECTRICAL: 115VAC, 60 HZ, 1 PHASE

NOTES:

ELECTRONIC CONTROLS

ADJUSTABLE LEGS OPTIONAL: (HLECG63), (HLECG82)

S/S FOUNDATION OPTIONAL: (FFSP76)

CHANNEL BASEFRAME OPTIONAL

INCLUDES CONDENSING UNIT SLIDE ASSEMBLY: (HWCUSST00)

INCLUDES 2 EA 12" LED INTERIOR LIGHTS (LEDLITE30)

INCLUDES FRONT-BREATHING GRILL ASSEMBLY: (GRLL-FB-EC/REV. 002)

REVISIONS:

'A'-ADDED FRONT-BREATHING GRILL, 2 EA LED INTERIOR LIGHTS, ADJUSTED HEIGHT FROM 73.5" TO 73.25", 11/15/19, CLH

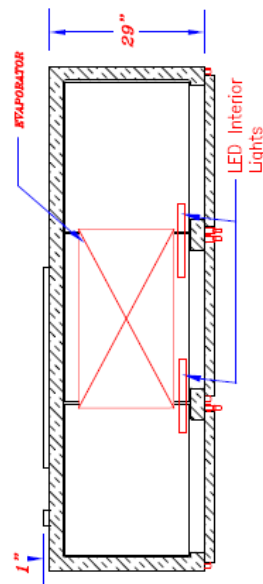
ITEM 75 CU. FT. FREEZER, MODULAR

PROJECT PRESENTATION SALES DWG DWG # 50686-1A

DATE 11/15/19 SCALE N.T.S. DWN: BY CLH

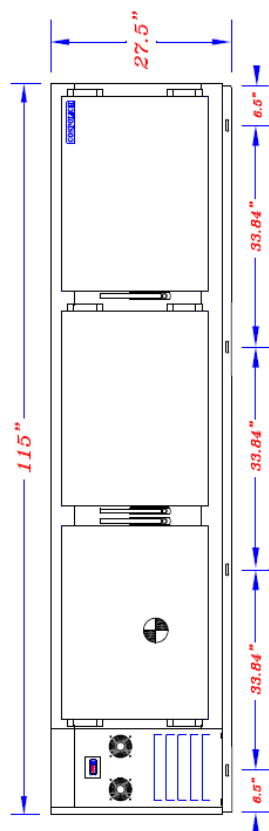
COSPOLICH INC.

DESTREHAN, LOUISIANA

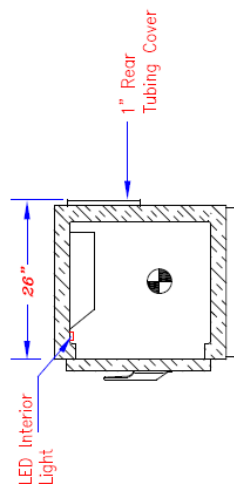


HORIZONTAL SECTION

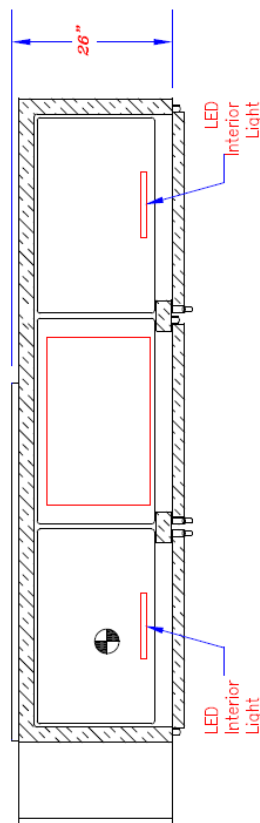
Illustration 1.5— General Arrangement Drawing— UCR30 Series
UCR30-2M-S-MLR, UCR30-2M-SN-MLR, UCR30-2M-SNL-MLR



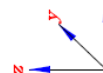
FRONT ELEVATION



VERTICAL SECTION



HORIZONTAL SECTION



Indicates Center of Gravity

(x, y, z) = (38", 12", 19")

MODELS: UCR30-2M-S-MLR UCR30-2M-S
 UCR30-2M-SN-MLR UCR30-2M-SN

SPECIFICATION

DIMENSIONS: Width 115" Depth 26" Height 27.5"

FINISH: Interior: (Reposed) S.S. Interior S.S.

INSULATION: POLYURETHANE FOAMED-IN-PLACE

REFRIGERATION: 404A REFRIGERANT

ELECTRICAL: 115VAC, 60 HZ, 1 PHASE

NOTES:

ELECTRONIC CONTROLS

ADJUSTABLE LEGS OPTIONAL: (HLEG45), (HLEG63)

S/S FOUNDATION OPTIONAL: (FFSUCR30)

FRONT-BREATHING GRILL INCLUDED: (GR44-FB-BC)

2 EA LED INTERIOR LIGHTS: (LEDLITE35)

1" REAR TUBING COVER

REVISIONS:

'A'-ADDED SECOND INTERIOR LIGHT, 8/25/16, CLH

'B'-FRONT-BREATHING GRILL ADDED, REVISED HEIGHT

FROM 28" TO 27.5", ADJUSTED DEPTH TO 26", 10/25/19, CLH

ITEM 30 CU. FT. UNDERCOUNTER REFRIGERATOR, MODULAR	
PROJECT PRESENTATION SALES DRAWING	DWG # 50623-1B
DATE 10/25/19	SCALE N.T.S.
BY CLH	
COSPOLICH INC.	
DESTREHAN, LOUISIANA	

Chapter 2—Operation

2.1 Introduction

These model are heavy-duty pieces of perishable service equipment designed for intermittent use. They incorporate electronic controls to regulate the cycling and temperature of the refrigeration system.

2.2 Table B—Controls and Indicators

Name	Type	Function
Power Switch	Toggle Switch	Power Control, terminates all electrical into and past the supply cord
Electronic Controller	Push Button Electronic, Digital Display	Cycles Refrigeration System (Automatic)
Low Pressure Control	Contact Points	Cycles the refrigeration system in instances of low refrigerant
Suction Valve	Manual Plunger Valve	Isolate suction at the compressor
Discharge Valve	Manual Plunger Valve	Isolate Discharge line at receiver

Note: Normal operating pressures in 90°F ambient environments for freezer applications (-5°F Cabinet temperature) should be 15-37 psi Suction Pressure and 125-200 psi Head Pressure.

Note: Operating pressures are affected by ambient conditions, product load, and the condition of the equipment.

Illustrations 2.1, Prepped Control Panel
UCR5 , UCR10, UCR15, UCR20 & UCR30 Series



Illustration 2.1A:
RWTL661-PM(L)
Prepped Electronic Controller Assembly

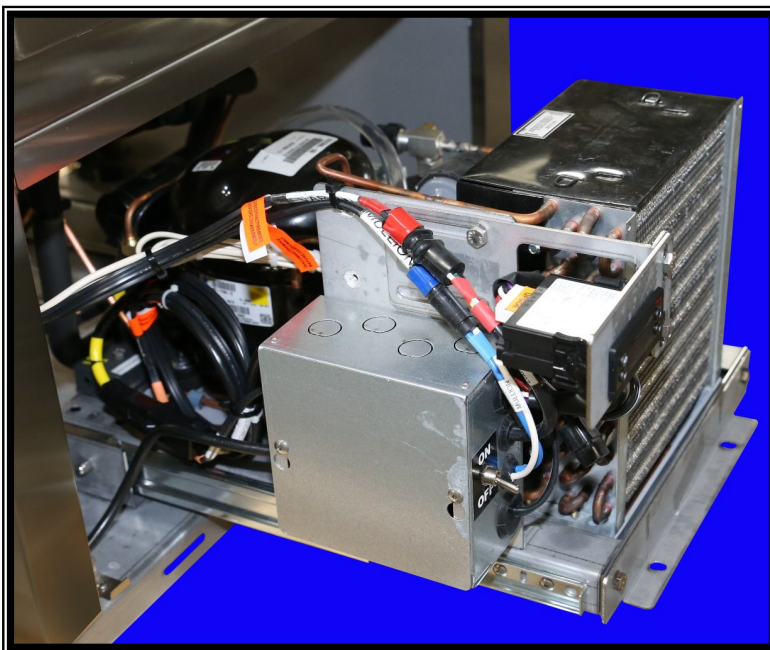


Illustration 2.1B: RWTL661-PM(L)
Prepped Electronic Controller Assembly

Illustrations 2.2A: Condensing Unit Assemblies
UCR5, UCR10, UCR15 & UCR20 Series

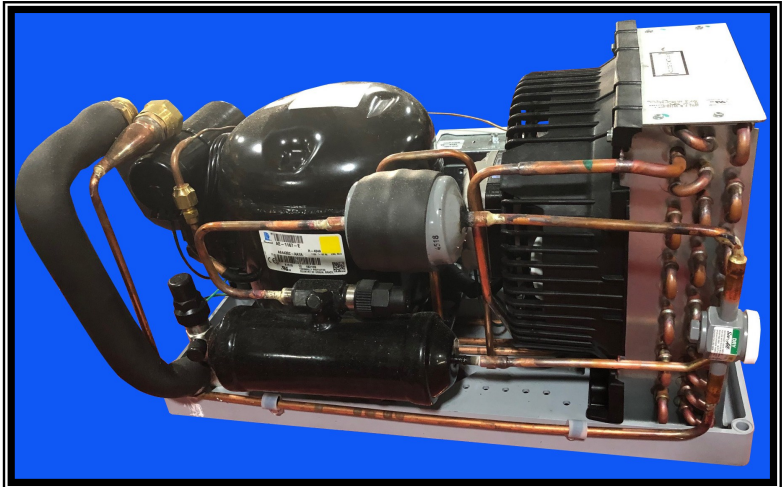


Illustration 2.2A: RWC144-PM
Prepped Condensing Unit Assembly

Illustrations 2.2B: Condensing Unit Assemblies
UCR30 Series

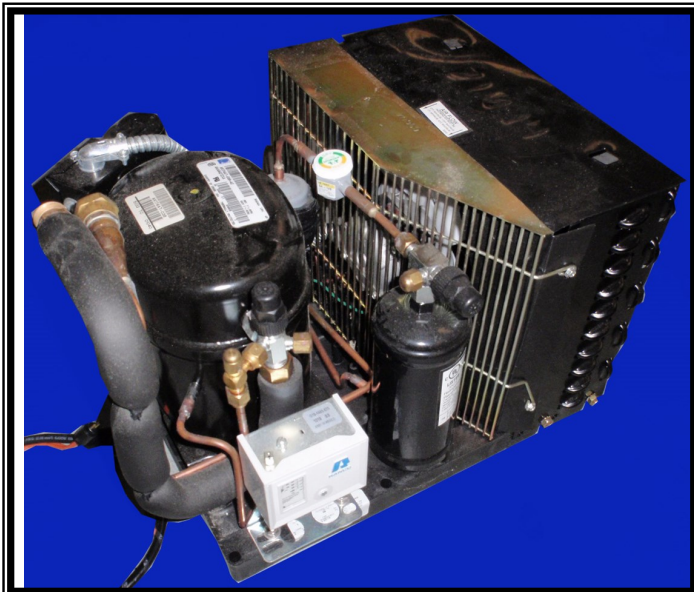


Illustration 2.2B: RUT390-PM,
Prepped Condensing Unit Assembly

Table C—Start Up Procedure

2.3 Start Up Procedure

The refrigeration system is completely factory assembled, pre-charged, and ready for operation. To energize the unit, it is only necessary to find the power supply cord and connect it to a proper 115V power source. Once the supply cord has been connected to a power source, the unit can be started by flipping the power control switch to the "ON" position.

Note: On modular units (MLR suffix in model number) the equipment will require dismantling. Instructions for installation, assembly, and disassembly are provided in Chapter 8 & 9

	Operation	Results
1.	Activate system by connecting electrical service cord to power supply.	This brings power to the control. The compressor should immediately come on line along with the condenser fan and the evaporator fan(s).
2.	Place power switch to "ON" position.	This brings power to the controls.
3.	Locate liquid refrigerant indication glass mounted on the receiver.	Once the system has been operating for two minutes, the glass should appear clear and full of liquid refrigerant.
4.	Wait 15 minutes.	The temperature in the storage area should begin to drop.
5.	Wait 3 hours.	Once the operating temperature has been reached, stocking of the cabinet are can begin.

2.4 Shut Down Procedure for Short Term

To shut down, switch the power control to the off position.



Warning: *PRIOR TO CLEANING ANY OF THE UNIT, THE SYSTEM SHOULD BE DEACTIVATED BY DISCONNECTING THE POWER SUPPLY.*

Table D—Shut Down Procedure for Short Term

	Operation	Results
1.	De-energize the system by flipping the power control switch "OFF".	Once the system is de-energized the cabinet has no power.

2.5 Cleaning Instructions

1. It is necessary that the power source be turned off.
2. Remove all shelves.
3. Wipe entire unit using a clean cloth or sponge with a mild detergent.

Warning: *DO NOT SPLASH OR POUR WATER ONTO THE EVAPORATOR ASSEMBLY, CONTROL PANEL, CONDENSING UNIT AND/OR WIRING.*



Caution: *POSSIBLE SHOCK HAZARD MAY RESULT AND UNIT MAY BE DAMAGED SHOULD ELECTRICAL COMPONENTS BECOME WET.*



4. A plastic scouring pad may be used in the storage area to remove any hardened particulate.

and
5. When cleaning is finished, rinse the inside thoroughly with a solution of vinegar water to neutralize all detergent/cleaner residue.

Note: *It is not recommended to use any strong or caustic cleaners on the freezer. Do not allow ammonia to stand in the interior of the unit. Make certain to rinse thoroughly to remove all residue. Failing to do so may cause damage or corrosion to the unit.*

2.6 Preparation for an Extended Period of Inactivity

This unit is designed for periodic use. For extended shut down the electrical should be disconnected and the interior cleaned.

Table E— Shut Down Procedure for Extended Period

	Operation	Results
1.	Fully close discharge valve at the receiver	Compressor will pump liquid refrigerant from system to receiver.
2.	Fully close suction valve at the compressor	This will isolate the refrigerant between the two valves.
3.	De-energize the system by flipping the power control switch to the "OFF" position and disconnecting the electrical supply cord.	De-energizes system. The condenser fan and evaporator fan(s) will cease operation.
4.	Clean and wipe dry the perishable storage compartment	This will reduce the odor buildup during shut down period.

Chapter 3—Functional Description

3.1 System Description

The unit is a self-contained, automatically controlled, continuous duty perishable storage system. It is designed with the intent and purpose of storing refrigerated items.

The operating temperature is automatically monitored by the electronic controls that are factory set to maintain a predetermined adequate storage condition.

The equipment is comprised of the following two basic compartment assemblies *(when included)*:

1. Condensing Unit Compartment—This area contains the condensing unit along with the electronic control assembly both installed on a slide out assembly.
2. Storage Compartment—The insulated storage area is a temperature controlled refrigerated area. Included in this compartment are the adjustable shelving and evaporator coil assembly.
3. Electronic High-Low Temperature Alarm Assembly—This assembly is separate from the unit and uses electronic sensors to monitor the temperature of the cabinet compartment. If the internal temperature deviates from the acceptable settings, the audible and visible alarms are triggered.

3.2 System Operation

The design of the freezer cabinet focuses primarily on the safe storage of perishable products. In engineering, considerable attention was placed on not only its functionality, but also serviceability.

The refrigeration system is a closed loop system. Barring a leak in the system, the addition of refrigerant will not be necessary. A periodic check of the refrigerant level, however, is recommended to ensure that the system operates at the optimum level at which it was designed.

The chilled compartment is designed for the storage of perishable items that require a temperature range of –5 to 0°F on freezers. It is a general rule that adequate spacing is allowed between the stored items to allow for proper air circulation.

Chapter 4—Scheduled Maintenance

4.1 Introduction

To ensure the longest and most trouble free operation, a thorough periodic maintenance schedule is required. The maintenance system should be aimed at maximizing the efficient utilization of maintenance personnel, minimizing down time, and providing the orderly acquisition of spare parts support.

The Cospolich freezer cabinet will generally be in operation in a facility or onboard a vessel where scheduled maintenance is performed according to Maintenance Index Plans. This unit requires regular maintenance. This chapter is intended as an alternative to any standard maintenance program that may pre-exist. The preventative maintenance schedule is based upon similar maintenance requirements for commercial refrigeration equipment.

4.2 Preventive Maintenance Action Index

If there is not a maintenance index plan, we have formulated our schedule for periodic maintenance in Table G.

4.3 Preparation for Maintenance

Since many areas affected in the maintenance schedule are electrically supplied, it may be necessary to de-energize the system when making these inspections.

4.4 Maintenance Procedures

A. Monthly Maintenance

1. The unit should first be de-energized by switching the toggle switch to the "OFF" position. The switch is found on the electronic control panel assembly in the condensing unit compartment.

Note: *It is necessary to first remove the louvered grill to the condensing unit compartment. This is done by lifting it straight up, then pulling the bottom out and down.*

2. Using a vacuum or soft brush/broom, brush the condenser fins in a vertical motion to remove dust or debris.

B. Bi-Monthly Maintenance

1. Check the drain line at both the inlet and outlet ends to make certain that there are no obstructions (forced air evaporator models only). It is not recommended to use any chemicals in clearing a clogged drain. The preferred method is to use compressed air, with approximately 60 psi being sufficient to free most clogs or obstructions. To do so, simply remove the drain line at the evaporator coil and attach an air line to it.
2. With the unit in a cooling cycle, use a flashlight and locate the refrigerant sight glass. If the compressor has been running for 3 or more minutes, there should be no visible bubbles.
 - A. If bubbles are present:
 - Determine if there is a leak by using an electronic leak detector.
 - Repair any/all leak(s).

Warning: *The system should be de-energized when checking for leaks.*

Warning: *Do not apply a flame to lines containing refrigerant as dangerous and toxic phosphine gas may be created.*



B. To repair leaks:

1. Flared Fitting: Can often be repaired by simply tightening the brass flare nut 1/4 of a turn. If tightening does not repair the leak, it may be necessary to re-flare the tubing.
2. Brazed Joint: It is necessary to pump down the system's refrigerant charge to remedy the problem. To pump the refrigerant into the receiver, you must first connect service gauges to the system at the valve on the compressor and the liquid valve on the receiver. Purge the gauges before opening the systems valves to avoid contamination. Run the receiver (liquid or high pressure) valve all the way in to stop the refrigerant from exiting the receiver. The system must be pumped down to a vacuum prior to opening. Once pumped down, the necessary repairs can be made.
3. Using a mild non-abrasive detergent and soft cloth, wipe the interior lining beginning with the top and working down. Also, wipe the gasket and where it sits on the cabinet interior.
4. Remove the louvered air grill and unbolt the condensing unit, then slide it out. The unit is capable of being completely removed due to the extra tubing coiled up behind/beside the unit. With the unit de-energized, check the condenser fan motor and make certain that it is secure and not loose. Inspect the fan blade for cracks and make sure it is tight on the motor.

5. To inspect the evaporator motor, de-energize the unit. Remove the drain line from the evaporator pan. Loosen the screws that hold the shroud. Lower the shroud and disconnect the polarized electrical connection. With the shroud out of the cabinet, proceed to inspect the motor mounting bolts and the fan for cracks or excessive play.

Note: *In vertical style evaporators, lift/remove the side cover to examine the evaporator fans, which should be clearly visible and accessible.*

6. Using a mild detergent and water, wipe the vinyl gasket. Make certain to clean under the gasket to remove any mildew or residue that may have accumulated.
7. Using a mild, non-abrasive detergent and water, wipe the cabinet exterior, paying careful attention to wipe the cabinet in the direction of the stainless steel grain texture.

C. Annual Maintenance

1. Slide the condensing unit out and check all refrigerant lines for leaks or fatigue, making sure no copper lines are in direct contact with any other metal surfaces. If contact exists, place an insulated material between the two surfaces.
2. Inspect electrical connections to make certain that there is a good contact and that wires are neither weakened or frayed.
3. Inspect the integrity of the cabinet.
4. Check all bolts and screws to make sure they are tight and secure.

D. 3-Year Frequency Maintenance

1. Replace all door gaskets. To do so, first remove all products from the freezer compartment. Using a Phillips screwdriver, remove the door from the cabinet and lay it on a flat surface, gasket facing up. Lift the flange off the gasket and remove all screws securing it to the door. Remove the original gasket and replace with a new one. Reinstall all screws and mount door back onto cabinet.
2. Inspect all motors and shafts for noise & wear, replace if necessary.
3. With the unit de-energized, remove the condensing unit from its compartment and inspect all wiring for signs of fatigue or wear.
4. Inspect the operation of the door latch assembly (when applicable). Check for signs of wear, loose screws, or mechanical failure.
5. Inspect the operation of the door hinges. To do so, open the door at a 90° angle to the cabinet and lift on the outer edge of the door. If there is upward movement of 1/2" or more, replace the hinges. On spring-mount hinges, when the doors no longer close properly, replace the hinges.

Table F—Preventive Maintenance Action Index

	Frequency	Description
1.	Monthly	A. Inspect condenser coil to make certain air flow is not obstructed and that it is clear of dust and debris.
2.	Bi-Monthly	A. Inspect and clear drain line. B. Check the liquid refrigerant sight glass for proper refrigerant charge. C. Clean interior and exterior of cabinet with mild detergent and water, dry thoroughly. D. Check both condenser fan motor and evaporator motor(s) for proper function and that they are mounted securely. E. Clean door gaskets and breaker strips with a damp cloth.
3.	Annually	A. Slide out condensing unit, check all joints and fittings for signs of wear, leaks, or fatigue. B. Inspect electrical connections to make certain that there is a good contact and that wires are neither weakened or frayed. C. Check the integrity of the cabinet.
4.	3-Year	A. Replace all door gaskets. B. Inspect motor shafts for noise or wear. C. Inspect electrical controls and wiring. D. Inspect door latch and hinges.

Chapter 5 – Troubleshooting

This chapter will assist in a systematic check of components in determining any cause of equipment failure.

It will be necessary that the individual involved in the troubleshooting operation be familiar with the function of the equipment as described in Chapter 3.

The following table lists the most common symptoms that may be experienced and the recommended corrective action. The tables are separated into electrical maintenance, mechanical maintenance, and operators' actions.

Table G – Mechanical and Electrical Troubleshooting Guide

Symptom	Possible Failure	Remedy
Unit does not operate	A. Control failure. B. Incorrect voltage. C. Failed compressor.	A. Adjust control or replace. B. Correct. C. Replace.
Unit runs continuously	A. Control failure. B. Bad connection at TXV expansion valve. C. Restricted air flow. D. Bad condenser fan motor. E. TXV valve stuck open. F. Ineffective door seal. G. Restricted air flow in storage compartment.	A. Adjust control or replace. B. Check and secure sensor bulb to suction line. C. Clear obstruction and clean condenser. D. Check and replace. E. Replace. F. Adjust door latch and hinges. G. Redistribute perishable items for even air flow.
Low Head Pressure	A. Defective compressor. B. Low refrigerant.	A. Remove and replace. B. Leak check & recharge.
High Head Pressure	A. Dirty condenser. B. System contains air. C. Refrigerant overcharge. D. Condenser fan bad.	A. Clean condenser fins. B. Evacuate, change filter dryer, recharge. C. Reduce quantity of refrigerant. D. Remove and replace.
Short Cycling	A. Maladjusted control. B. Low refrigerant.	A. Adjust control. B. Leak check and recharge.

Chapter 6—Corrective Maintenance

6.1 Introduction

This chapter focuses on the instruction needed in the removal and replacement of certain components. We will also address the repair of components not listed under the schedule maintenance index covered in Chapter 4.

The components that we address are considered acceptable for repair using standard procedures that we will detail. The level of skills required to perform the service or repair will vary. Some may require specific training. It is up to the individual and /or his supervisor to determine their capability to undertake the particular task of service or repair.

Note: The service or repair items are limited to those listed as field-replaceable, which are indicated and illustrated in Chapter 7. Refer to Table I and Illustrations 7.A through 7.P for assistance.

6.2 Repair & Replacement Procedures

Warning: PRIOR TO PERFORMING ANY WORK ON THE SYSTEM, IT IS REQUIRED THAT THE UNIT BE DE-ENERGIZED.



6.2.1 Replacement of Compressor

Note: To access the electrical components, the louvered grill on the front of the cabinet must be removed. To do so, lift up and pull the bottom outward.

1. Evacuate the refrigerant from the system using a recovery system in compliance with all Federal regulations.

2. Disconnect power supply to the unit.

3. Remove the exterior grill. With the grill removed, use a 3/8" wrench/socket to remove the mounting bolts that secure the condensing unit to the cabinet base. Slide entire unit out, paying attention to lift it over the angle mounting clips at the base.

COMPRESSOR	
MODEL	PART #
UCR5, UCR10, UCR15 & UCR20 Series	RWC144-PM
UCR30 Series	RUT390-PM

Note: Wires should be labeled for later identification prior to disconnecting for service.

4. Find electrical terminal box on side of compressor and remove cover. Disconnect the wires from the compressor. Remove the screws attaching the terminal box to the compressor.
5. Using wrenches, remove the suction and discharge valve stem cover caps on each side of the compressor. Also remove the cap nut on the suction and discharge side as well.
6. Disconnect high-side line at the compressor. This is done by heating the brazed connection using an acetylene and oxygen torch set.



Warning: Do not apply a flame to lines containing refrigerant as dangerous and toxic phosgene gas may be created.

7. To remove the low pressure control capillary tube and service fitting, loosen the 1/4" brass flare nut on the suction valve.
8. Disconnect the compressor from its mounting. Remove the wire clips on each of the four feet. Remove old compressor.
9. To install the new compressor, place it in position on the base and reinstall four wire clips.
10. Reattach the suction and discharge valve blocks to the appropriate sides of the compressor.
11. Reattach the low pressure control capillary tube and service fittings to the suction side of the compressor.
12. Reattach the suction line to the compressor.
13. Prepare the high pressure line's end by cleaning off residue using a fine sandpaper or emery cloth. Also clean the connection on the compressor. Apply flux to both ends and braze the connections into place.
14. Remove valve stem cap from suction block on side of the compressor. Run valve stem out all the way then in one turn clockwise.
15. Place refrigeration service gauge hoses on both suction and high side valves. Attach a bottle of refrigerant to the charging hose and charge the system with 10 psi of 404a, then using N₂, bring pressure up to 150 psi. Use an electronic leak detector to check system for leaks. Repair all leaks, if necessary.
16. If no leaks are present, recover the test charge using a vacuum recovery pump.
17. With the system pressure at 0 psi, connect the vacuum pump and evacuate the system. Run pump for 1 hour. Pump should pull system down to 29.72" Hg (NSTM 516 requires evac. of 5000 microns, 29.72" Hg).
18. Reattach electrical terminal box and secure all wiring.
19. Check refrigeration tag on the unit for the number of ounces of refrigerant to place into The system for start up. Monitor the pressure on both the suction and discharge sides of the manifold gauges. As the temperature in the storage area begins to fall, check the refrigerant flow through the sight glass. The unit is fully charged when there are no bubbles in the sight glass. If after five minutes of operation, bubbles are still present, it may be necessary to add more refrigerant, which should be done in small amounts to keep from overcharging.

Warning: Overcharging a refrigeration system can be dangerous. If assistance is required, call Cospolich (800) 423-7761 to speak to a service technician.



6.2.2 Replacement of Low Pressure Control—(Part #: RWPL02)

1. Disconnect the unit from electrical service.
2. Remove control cover and disconnect electrical terminals.
3. Disconnect capillary tube.
4. Remove mounting fasteners on control base and install new control.
5. To adjust the new control, hook up service gauges to the suction and discharge valves and crack them to allow the gauges to detect a reading.
6. Using a standard screwdriver, coarse adjust the control by turning the adjustment screws on the top of the control. Preset the cut-in and cut-out at 0 psi and 10 psi respectively for a freezer (and 0 psi and 10 psi respectively for a freezer, when applicable).

Note: *If your unit does not contain a thermostat, please contact Cospolich Customer Service at (800) 423-7761 for your cabinet's appropriate settings.*

7. Start the system and allow it to run for five minutes. Monitor the low side pressure. Fine adjustments may be necessary to achieve the proper cycling pressures.

6.2.3 Replacing Expansion Valve (TXV)—(Part #: RWEV27)

1. Close liquid valve and run compressor until it pumps refrigerant into the receiver (low side service gauge will read 1 psi). Close the suction line valve. It may be necessary to jump out the pressure switch in order to achieve the 1 psi reading.
2. Disconnect the sensor bulb connections at the suction line.
3. Disconnect the liquid line (1/4") and suction line (3/8") then remove the TXV.
4. Install new TXV, reconnect lines, and re-install the sensor bulb.
5. Purge system and add refrigerant, if needed.

6.2.4 Replacing Filter Dryer —(Part #: RWFD02)

1. Close liquid line valve and run compressor until the low side refrigeration gauge indicates 1 psi, then close suction. It may be necessary to jump out the pressure switch in order to achieve the 1 psi reading.
2. Remove the filter dryer from the system and replace with new dryer.
3. Purge system and add refrigerant, if needed.

6.2.5 Replacing Condenser Fan Motor

1. Disconnect all electrical power to the unit.
2. Remove the condensing unit from its compartment.
3. Remove the protective wire shroud from around the motor.

CONDENSER FAN MOTOR	
MODEL	PART #
UCR5, UCR10, UCR15 & UCR 30 Series	RWCM55
UCR30 Series	RWCM06

Note: Wires should be labeled for later identification prior to disconnecting for service.

4. Disconnect fan motor leads from the terminal box on the compressor.
5. Remove the mounting screws at the motor base.
6. Using an Allen wrench, remove the aluminum fan.
7. To install new motor, reverse the process.

6.2.6 Replacing Condenser Fan Blade

1. Disconnect all electrical power to unit.
2. Remove the condensing unit from the its compartment.
3. Locate and remove the five mounting screws attaching the blower trim and frame.
4. Remove protective wire shroud from around the motor.
5. Using an Allen wrench, loosen the set screw on the blade hub and slide the blade from the shaft.
6. Replace the blade. Reverse the process to reassemble.

CONDENSER FAN BLADE	
MODEL	PART #
UCR5, UCR10, UCR15 & UCR 20 Series	RWFB28
UCR30 Series	RWFB05

6.2.7 Replacement of Axial Fan Motor—(Part #: RWEM26)

1. To remove front grill, lift up then outward.
2. Disconnect polarized electrical harness.
3. Disconnect fasteners and remove faulty axial fan motor.
4. Reverse the process to install new axial fan motor.

Cospolich Inc. urges that all individuals responsible for training, teaching or advising, installation mechanics and service personnel emphasize proper techniques and strict adherence to recommended practices for electrical maintenance.

6.2.8 Replacing the Anti-Condensate Mullion Heater(s)

Note: The anti-condensate heater wire is located behind the front edge of the vinyl breakers in the door opening.

1. Disconnect all electrical power to the cabinet
2. Remove vinyl breaker strips by exerting pressure at the front edge toward the door.
3. Disconnect anti-condensate heater wiring connection.
4. Remove heater from recessed rail.
5. Replace new heater wire in rail and reconnect electrical.

ANTI-CONDENSATE MULLION HTR.	
MODEL	PART #
UCR5 Series	L1HR85
UCR10 & UCR20 Series	L1HR104
UCR15 Series	L1HR82
UCR30 Series	L1HR99

6.2.9 Replacement of Condenser, Cabinet, & Defrost Sensors

1. For assistance with the condenser, cabinet, & defrost sensors, contact Cospolich Technical Support at 1-800-423-7761.

CONDENSER, CABINET & DEFROST SENSORS	
MODEL	PART #
UCR5, UCR10, UCR15, UCR20 & UCR30 Series	RWTS13 RWTS14 RWTS15

6.2.10 Replacement of Condenser

1. For assistance with the condenser, contact Cospolich Technical Support at 1-800-423-7761.

6.2.11 Replacement of Start Capacitor Kit

1. Shut off all electrical power to the unit.
2. Remove front louvered grill.
3. Unbolt and slide out the condensing unit assembly.
4. Remove the faulty start capacitor from the side of the condensing unit assembly.
5. Reverse the process to install the new start capacitor.

CONDENSER	
MODEL	PART #
UCR5, UCR10, UCR15 & UCR 20 Series	RWCD95
UCR30 Series	RWFB05

START CAPACITOR KIT	
MODEL	PART #
UCR5 & UCR10 Series	RWCP89
UCR15 & UCR20 Series	RWCP47

6.2.12 Replacement of Condensing Unit Overload

1. Shut off all electrical power to the unit.
2. Remove front louvered grill.
3. Unbolt and slide out the condensing unit assembly.
4. Remove small black metal cover to the electrical box on the side of the condensing unit assembly.

CONDENSING UNIT OVERLOAD

MODEL	PART #
UCR5, UCR10, UCR15 & UCR 20 Series	RWOVL92
UCR30 Series	RWOVL38

Note: Wires should be labeled for later identification prior to disconnecting for service.

5. Disconnect electrical connections to the faulty condensing unit overload. Remove the faulty condensing unit overload.
6. Reverse the process to install the new condensing unit overload.

6.2.13 Replacement of Condensing Unit Relay

1. Shut off all electrical power to the unit.
2. Remove front louvered grill.
3. Unbolt and slide out the condensing unit assembly.
4. Remove small black metal cover to the electrical box on the side of the condensing unit assembly.

CONDENSING UNIT RELAY

MODEL	PART #
UCR5, UCR10, UCR15 & UCR 20 Series	RWRLY121
UCR30 Series	RWRLY07

Note: Wires should be labeled for later identification prior to disconnecting for service.

5. Disconnect electrical connections to the faulty condensing unit relay. Remove the faulty condensing unit relay.
6. Reverse the process to install the new condensing unit relay.

6.2.14 Replacement of Prepped Condensing Unit Assembly

1. For assistance with the prepped condensing unit assembly contact Cospolich Technical Support at 1-800-423-7761.

PREPPED CONDENSING UNIT ASSEMBLY

MODEL	PART #
UCR5, UCR10, UCR15 & UCR 20 Series	RWC144-PM
UCR30 Series	RUT390-PM

6.2.15 Replacement of Prepped Evaporator Coil Assembly

1. For assistance with the prepped evaporator coil assembly, contact Cospolich Technical Support at 1-800-423-7761.

PREPPED EVAP COIL ASSEMBLY

MODEL	PART #
UCR5, UCR10, UCR15 & UCR 20 Series	RWE010-PM
UCR30 Series	RWE030-PM

6.2.16 Replacement of Evaporator Fan Cover

1. Shut off all electrical power to the unit.
2. Open front door to the unit.
3. Remove the screws securing the faulty evaporator fan cover to the evaporator coil assembly. Remove the faulty evaporator fan cover.
4. Reverse the process to install the new evaporator fan cover.

EVAPORATOR FAN COVER

MODEL	PART #
UCR5 & UCR10 Series	RWE50328
UCR15 & UCR20 Series	RWE5054D

6.2.17 Replacement of Evaporator Fan Blade

1. Shut off all electrical power to the unit.
2. Open front door to the unit.
3. Remove the screws securing the evaporator fan cover to the evaporator coil assembly. Remove the evaporator fan cover.
4. Using a permanent marker, mark on the shaft of the evaporator fan motor where the evaporator fan blade is installed. Remove the faulty evaporator fan blade by sliding it off the shaft of the evaporator fan motor.
5. Reverse the process to install the new evaporator fan blade. Install in the same location on the shaft of the evaporator fan motor as the previous fan blade.

EVAPORATOR FAN BLADE

MODEL	PART #
UCR5 & UCR10 Series	RWFB11
UCR15 & UCR20 Series	RWE510B

6.2.18 Replacement of Evaporator Fan Motor

1. Shut off all electrical power to the unit.
2. Open front door to the unit.
3. Remove fasteners securing aluminum evaporator coil assembly cover. Disconnect polarized electrical connections to the evaporator coil assembly cover. Remove the aluminum evaporator coil assembly cover.
4. Remove fasteners securing the faulty evaporator fan motor to the evaporator coil assembly cover. Remove the faulty evaporator fan motor.

EVAPORATOR FAN MOTOR

MODEL	PART #
UCR5 & UCR10 Series	RWEM14
UCR15 & UCR20 Series	RWEM03

- Using a permanent marker, mark on the shaft of the evaporator fan motor where the evaporator fan blade is installed. Remove the evaporator fan blade from the faulty evaporator fan motor.
- Reverse the process to install the new evaporator fan motor. Install the evaporator fan blade in the same location on the shaft of the new evaporator fan motor as the previous fan motor.

6.2.19 Replacement of Copper Tubing Wheel Assembly

- For assistance with the copper tubing wheel assembly, contact Cospolich Technical Support at 1-800-423-7761.

COPPER TUBING WHEEL ASSEMBLY

MODEL	PART #
UCR5 Series	RWCTW40M
UCR10 Series	RWCTW41M
UCR15 Series	RWCTW42M
UCR20 Series	RWCTW43M
UCR20 Series	RWCTW44M

6.2.20 Replacement of 1/2" Vinyl Drain Line Tubing—(Part #: CVT12)

- Remove rear drain line cover, then open front door to the unit.
- Remove drain line tubing from evaporator drain line.
- Pull drain line tubing through refrigeration access holes in rear wall of unit.
- Reverse the process to install new drain line tubing.

6.2.21 Replacement of Sight Glass—(Part #: RWSG09)

- For assistance with the sight glass, contact Cospolich Technical Support at 1-800-423-7761.

6.2.22 Replacement of Receiver Tank

- For assistance with the receiver tank, contact Cospolich Technical Support at 1-800-423-7761.

6.2.23 Replacement of Electronic Controller Relay - (Part #: PCCR64)

- Shut off all electrical power to the unit.

RECEIVER TANK

MODEL	PART #
UCR5, UCR10, UCR15 & UCR 20 Series	RWRT53
UCR30 Series	RWRT03

6.2.27 Replacement of Prepped Electronic Controller Assembly (Part #: RWTL661-PM(XL))

- For assistance with the prepped electronic controller assembly, contact Cospolich Technical Support at 1-800-423-7761.

6.2.24 Replacement of Prepped Electronic Controller Assembly —(Part #: RWTL651-PM)

1. For assistance with the prepped electronic controller assembly, contact Cospolich Technical Support at 1-800-423-7761.

6.2.25 Replacement of On/Off Toggle Switch—(Part #: LWTS01)

1. Shut off all electrical power to the unit.
2. Remove front louvered grill.
3. Remove junction box cover containing faulty On/Off toggle switch.
4. Disconnect electrical connections to faulty On/Off toggle switch. Remove faulty On/Off toggle switch from junction box cover.
5. Reverse the process to install new On/Off toggle switch.

6.2.26 Replacement of Door Assembly

1. Remove screws securing door hinges to cabinet. Remove faulty door.
2. Install new door by screwing hinges into existing holes in the front face of the cabinet.
3. If the new door does not close or latch properly, adjust the door latch and/or strike until the desired seal is achieved.

6.2.27 Replacement of Secondary Breaker Strip

1. Using a paint scraper or flathead screwdriver along the edge, pry off faulty secondary breaker strip.
2. Install new secondary breaker strip by pressing into place.
3. Install new breaker strip corner by pressing into place. Re-install secondary breaker strips.

DOOR ASSEMBLY	
MODEL	PART #
UCR5 & UCR15 Series	DA65S
UCR10 Series	DB65S
UCR20 Series	DB65S
UCR30 Series	DE65S

SECONDARY BREAKER STRIP	
MODEL	PART #
UCR5 & UCR15 Series	HXBS19 HXBS48
UCR10 & UCR 20 Series	HXBS48
UCR 30 Series	HXBS27 HXBS48

6.2.28 Replacement of Breaker Strip Corner—(Part #: HXBSC01)

1. Using a paint scraper or flathead screwdriver along the edge, pry off secondary breaker strip alongside faulty breaker strip corner. Pry off faulty breaker strip corner.

6.2.29 Replacement of LED LIGHT—(Part #: LEDLITE35)

1. For assistance with the LED Light, contact Cospolich Technical Support at 1-800-423-7761.

6.2.30 Replacement of LED Light Driver —(Part #: LEDLITE15)

1. For assistance with the LED Light Driver, contact Cospolich Technical Support at 1-800-423-7761.

6.2.31 Replacement of Shelves

1. Open front door to the unit.
2. Lift old shelf to remove. Tilt to remove from unit interior.
3. Reverse the process to install the new shelf.

REPLACEMENT SHELVES

MODEL	PART #
UCR5 Series STAINLESS STEEL	SSW20BX20B
UCR10 Series STAINLESS STEEL	SSW29BX19B
UCR15 Series STAINLESS STEEL	SSW31CX19B
UCR20 Series STAINLESS STEEL	SSW30BX19B

6.2.32 Replacement of Shelf Clip—(Part #: HXCS01)

1. Open front door to the unit.
2. Remove shelving.
3. To remove old/faulty shelf clip, squeeze slightly, pull out the bottom of the clip, then pull the tab from within the shelf standard.
4. To install new shelf clip, slip upper tab of new shelf clip into the shelf standard, then press lower tab of new shelf clip into the shelf standard.

6.2.33 Replacement of Shelf Standard—(Part #: HXSD36)

1. Open front door to the unit.
2. Remove shelving and shelf clips from faulty shelf standard.
3. Lift/slide faulty shelf standard upwards and remove from interior of unit.
4. Reverse the process to install new shelf standard.

6.2.34 Replacement of Adjustable Leg—(Part #: HLEG63)

1. Shut off all electrical power to the unit.
2. Using an appropriate method, lift/prop entire unit up in order to allow faulty adjustable leg to be unscrewed and removed from the base frame of the unit.
3. Reverse the process to install the new adjustable leg.

6.2.35 Replacing Door Latch —(Part #: HXLH06)

1. Remove three side mounting screws in the latch.
2. Remove two screws in the strike.
3. Replace both latch and strike.
4. Replace in reverse order.

6.2.36 Replacing Door Hinge—(Part #: HXHE02)

Note: *This procedure is best accomplished with two people—one to hold the door while the other removes and the attachment screws.*

1. Using a screwdriver, remove the three screws that attach the butt section of the hinges to the cabinet.
2. With the door detached from the cabinet, remove the screws that attach the hinges to the door.
3. To install replacement hinges, reverse the process.

6.2.37 Replacement of Latch Strike—(Part #: HXLH06-S)

1. Open front door to the unit.
2. Remove fasteners securing the faulty latch strike to the front face of the unit. Remove the faulty latch strike.
3. Reverse the process to install the new latch strike.

6.2.38 Replacement of Male/Female Twist Lock Disconnects—(Part #: LEP019, LEP020)

1. For assistance with electronic high-low temperature alarm assembly, contact Cospolich Technical Support at 1-800-423-7761.

6.2.39 Replacing Magnetic Door Gasket

Note: It is suggested that the door be removed from the cabinet and placed gasket side up on a table during the replacement process. Pay careful attention not to cut the new gasket when installing.

1. Pull back gasket and remove all fasteners located below the gasket lip.
2. Clean the area under the gasket.
3. Place new gasket on door, replace all fasteners.
4. Reinstall door onto cabinet.

MAGNETIC DOOR GASKET

MODEL	PART #
UCR5 Series	GA65MV
UCR10 Series	GB65MV
UCR15 Series	GA65MV
UCR20 Series	GB65MV
UCR30 Series	GF65MV

6.2.40 Replacement of Bump Out Front Breathing Grill with Cut Out for Electronic Controller

1. To remove faulty front grill, lift up then outward.
2. Disconnect polarized electrical harness.
3. Reverse the process to install new front grill.

FRONT GRILL

MODEL	PART #
UCR5 Series	GR05-FB-EC
UCR10 Series	GR09-FB-EC
UCR15 Series	GR10-FB-EC
UCR20 Series	GR11-EC-FB REV.002

6.2.41 Replacement of Electronic Controller Digital Display (Part #'s: RWTT65)

1. For assistance with the electronic controller digital display, contact Cospolich Technical Support at 1-800-423-7761.

6.2.42 Replacement of Quick Connect Fittings—(Part #'s: RWQF0048, RWQF0088)

1. For assistance with the quick connect fittings, contact Cospolich Technical Support at 1-800-423-7761.

6.2.43 Replacement of Electronic High-Low Temperature Alarm (Part #: HLTA01R-EC)

1. For assistance with electronic high-low temperature alarm assembly, contact Cospolich Technical Support at 1-800-423-7761.

Chapter 7—Parts List

7.1 Introduction

This section of the manual contains lists of replaceable parts. Each of the tables contain a list of removable parts associated with an assembly of the cabinet. No parts identification has been provided for details of permanently assembled items or those items that are not suitable for field repair.

7.2 Source Codes

The sources for some items are shown in the part tabulation. Where no individual source code is listed, the part is available through Cospolich Inc., PO Box 1206, Destrehan, LA 70047 (Fed. Mfg. Code #66682).

Table H—Source Codes

Code Number	Name	Abbreviation	Address	Models
32761	Kason Industries	(KASON)	Newnan, GA 30265	UCR5, UCR10, UCR15, UCR20 UCR30 Series
78462	Sporlan Valve	(SPORLAN)	Washington, MO 63090	UCR5, UCR10, UCR15, UCR20 UCR30 Series
59431	Tecumseh Products	(TECUMSEH)	Ann Arbor, MI 48108	UCR5, UCR10, UCR15, UCR20 UCR30 Series
8R405	Nashville Wire Products	(NWP)	White Bluff, TN 37187	UCR5, UCR10, UCR15, UCR20 UCR30 Series
79264	Jean's Extrusions, Inc.	(JEANS)	Salem, IN 47167	UCR5, UCR10, UCR15, UCR20 UCR30 Series
2K223	Refrigeration Hardware	(RHS)	Grand Junction, CO 81505	UCR5, UCR10, UCR15, UCR20 UCR30 Series
66682	Cospolich, Inc.	(COSPOLICH)	Destrehan, LA 70047	UCR5, UCR10, UCR15, UCR20 UCR30 Series
15999	Heatcraft Inc.	(HEATCRAFT)	Wilmington, NC 28401	UCR5, UCR10, UCR15, UCR20 UCR30 Series
0TAA3	Component Hardware Group	(CHG)	Lakewood, NJ 08701	UCR5, UCR10, UCR15, UCR20 UCR30 Series
085W1	Allied Electronics, Inc.	(AE)	Mobile, AL 36606	UCR5, UCR10, UCR15, UCR20 UCR30 Series

Table I—Parts List for UCR5 Series

	ITEM	COSP#	MFG#	Vendor	QTY	U/M
1	COMPRESSOR	RWC145	AE4430Z-AA1A	TECUMSEH	1	EA
2	LOW PRESSURE CONTROL	RWPL02	RWPL02	COSPOLICH	1	EA
3	FILTER DRYER	RWFD02	C-052-S	SPORLAN	1	EA
4	CONDENSER FAN MOTOR, 115V	RWCM55	810L006B94	TECUMSEH	1	EA
5	CONDENSER FAN BLADE	RWFB28	4VEA009	TECUMSEH	1	EA
6	PREPPED CONDENSING UNIT ASSEMBLY, 404A, 115V	RWC144-PM	RWC144-PM	COSPOLICH	1	EA
7	CONDENSER	RWCD95	5733-G04	TECUMSEH	1	EA
8	START CAPACITOR	RWCP121	K146-55	TECUMSEH	1	EA
9	CONDENSING UNIT OVERLOAD KIT	RWOVL92	K90-66	TECUMSEH	1	EA
10	CONDENSING UNIT RELAY	RWRLY121	K71-46	TECUMSEH	1	EA
11	INTENTIONALLY LEFT BLANK	————	————	————	—	—
12	COPPER TUBING WHEEL	RWCTW40M	RWCTW40M	COSPOLICH	1	EA
13	SIGHT GLASS	RWSG09	SA-K142	SPORLAN	1	EA
14	RECEIVER TANK	RWRT53	51085-1HV	TECUMSEH	1	EA
15	INTENTIONALLY LEFT BLANK	————	————	————	—	—
16	QUICK CONNECT FITTING, 1/4"	RWQF0406F / RWQF0406M	RWQF04060F / RWQF0406M	COSPOLICH	1 / 1	EA
17	QUICK CONNECT FITTING, 3/8"	RWQF0606F / RWQF0606M	RWQF06040F / RWQF060406M	COSPOLICH	1 / 1	EA
18	EXPANSION VALVE	RWEV27	109264-001	SPORLAN	1	EA
19	PREPPED EVAPORATOR COIL ASSEMBLY, 404A, 115V	RWE010-PM	RWE010-PM	COSPOLICH	1	EA
20	EVAPORATOR FAN COVER	RWE5054D	5054D	COSPOLICH	1	EA
21	EVAPORATOR FAN BLADE	RWE5101B	5101B	COSPOLICH	1	EA
22	EVAPORATOR FAN MOTOR, 115V	RWEM03	25300701	HEATCRAFT	1	EA
23	1/2" VINYL DRAIN LINE TUBING	CVT12	CVT12	COSPOLICH	5	EA
24	FRONT BREATHING GRILL WITH CUTOUT FOR ELECTRONIC CONTROLLER	GR40-FB-EC	GR40-FB-EC	COSPOLICH	1	EA
25	ANTI-CONDENSATE MULLION HEATER WIRE, 115V, 85", 32°	L1HR85	64-200	RHS	1	EA
26	SECONDARY BREAKER STRIP, 19"	HXBS19	20-0100	JEANS	2	EA
27	SECONDARY BREAKER STRIP, 48"	HXBS48	20-6910	JEANS	1	EA
28	BREAKER STRIP CORNER	HXBSC01	19-0000	JEANS	4	EA
29	LED LIGHT	LEDLITE35	LEDLITE35	COSPOLICH	1	EA
30	LED LIGHT DRIVER—12 WATT	LEDLITE15HARN	LEDLITE15HARN	COSPOLICH	1	EA
31	STAINLESS STEEL SHELF	SSW20BX20B	SSW20BX20B	NWP	1	EA
32	SHELF CLIPS	HXCS01	0066000004	KASON	4	EA
33	SHELF STANDARD 36"	HXSD36	0065007036	KASON	2	EA
34	ADJUSTABLE LEG **	HLEG63	1-1752F260T50S	KASON	4	EA
35	INTENTIONALLY LEFT BLANK	————	————	————	—	—
36	ELECTRONIC HIGH-LOW TEMPERATURE ALARM ASSEMBLY**	HLTA01R-EC	HLTA01R-EC	COSPOLICH	1	EA
37	CONDENSER SENSOR, 59"	RWTS13	RWTS13	COSPOLICH	1	EA
38	CABINET SENSOR, 118"	RWTS14	RWTS14	COSPOLICH	1	EA
39	DEFROST SENSOR, 118"	RWTS15	RWTS15	COSPOLICH	1	EA
40	ELECTRONIC CONTROLLER RELAY, 30 AMP, 120V	PCCR64	886-0144	COSPOLICH	2	EA
41	PREPPED ELECTRONIC CONTROLLER ASSEMBLY	RWTL651-PM(L)	RWTL651-PM(L)	COSPOLICH	1	EA
42	ELECTRONIC CONTROLLER MOUNTING BRACKET	RUDCLIP01	RUDCLIP01	COSPOLICH	2	EA
43	ON/OFF TOGGLE SWITCH	LWTS01	2FA53-73-TAB5	AE	1	EA
44	ELECTRONIC CONTROLLER DIGITAL DISPLAY	RWTT65	RWTT65	COSPOLICH	1	EA
45	TWIST LOCK DISCONNECT MALE/FEMALE	LEP019/LEP020	LEP019/LEP020	COSPOLICH	1	EA
46	DOOR ASSEMBLY	DA65S	DA65S	COSPOLICH	1	EA
47	DOOR LATCH	HXLH06	172BC	KASON	1	EA
48	DOOR HINGE	HXHE02	0217000008	KASON	2	EA
49	LATCH STRIKE	HXLH06-S	172-2	KASON	1	EA
50	MAGNETIC DOOR GASKET	GA65MV	12-7120	JEANS	1	EA
51	AXIAL FAN MOTOR, 115V	RWEM26	RWEM56	COSPOLICH	2	EA
52	INTENTIONALLY LEFT BLANK	————	————	————	—	—
53	INTENTIONALLY LEFT BLANK	————	————	————	—	—
54	INTENTIONALLY LEFT BLANK	————	————	————	—	—
55	LED LIGHT FIXTURE BRACKET	LEDLITE13	LEDLITE13	COSPOLICH	2	EA

Note: **Optional Accessory

Table L – Parts List for UCR10 Series

	ITEM 65	COSP#	MFG#	Vendor	QTY	U/M
1	COMPRESSOR	RWC145	AE1167E-212-J7	TECUMSEH	1	EA
2	LOW PRESSURE CONTROL	RWPL02	RWPL02	COSPOLICH	1	EA
3	FILTER DRYER	RWFD02	C-052-S	SPORLAN	1	EA
4	CONDENSER FAN MOTOR, 115V	RWCM55	6W115	TECUMSEH	1	EA
5	CONDENSER FAN BLADE	RWFB28	4VEA009	TECUMSEH	1	EA
6	PREPPED CONDENSING UNIT ASSEMBLY, 404A, 115V	RWC144-PM	RWC144-PM	COSPOLICH	1	EA
7	CONDENSER	RWCD95	50733-G04	TECUMSEH	1	EA
8	START CAPACITOR	RWCP121	K146-55	TECUMSEH	1	EA
9	CONDENSING UNIT OVERLOAD KIT	RWOVL92	K90-66	TECUMSEH	1	EA
10	CONDENSING UNIT RELAY	RWRLY121	K71-46	TECUMSEH	1	EA
11	INTENTIONALLY LEFT BLANK	—————	—————	—————	—	—
12	COPPER TUBING WHEEL	RWCTW41M	RWCTW41M	COSPOLICH	1	EA
13	SIGHT GLASS	RWSG09	SA-K142	SPORLAN	1	EA
14	RECEIVER TANK	RWRT53	51085-1HV	TECUMSEH	1	EA
15	INTENTIONALLY LEFT BLANK	—————	—————	—————	—	—
16	QUICK CONNECT FITTING, 1/4"	RWQF0406F / RWQF0406M	RWQF04060F / RWQF0406M	COSPOLICH	1 / 1	EA
17	QUICK CONNECT FITTING, 3/8"	RWQF0606F / RWQF0606M	RWQF06040F / RWQF060406M	COSPOLICH	1 / 1	EA
18	EXPANSION VALVE	RWEV27	109264-001	SPORLAN	1	EA
19	PREPPED EVAPORATOR COIL ASSEMBLY, 404A, 115V	RWE010-PM	RWE010-PM	COSPOLICH	1	EA
20	EVAPORATOR FAN COVER	RWE5054D	5054D	HEATCRAFT	1	EA
21	EVAPORATOR FAN BLADE	RWE5101B	5101B	HEATCRAFT	1	EA
22	EVAPORATOR FAN MOTOR, 115V	RWEM03	25300701	HEATCRAFT	1	EA
23	1/2" VINYL DRAIN LINE TUBING	CVT12	CVT12	COSPOLICH	5	EA
24	FRONT BREATHING GRILL WITH CUTOUT FOR ELECTRONIC CONTROLLER	GR41-FB-EC	GR41-FB-EC	COSPOLICH	1	EA
25	ANTI-CONDENSATE MULLION HEATER WIRE, 115V", 32°	L1HR104	64-200	RHS	1	EA
26	INTENTIONALLY LEFT BLANK	—————	—————	—————	—	—
27	SECONDARY BREAKER STRIP, 48"	HXBS48	20-6910	JEANS	2	EA
28	BREAKER STRIP CORNER	HXBSC01	19-0000	JEANS	4	EA
29	LED LIGHT	LEDLITE35	LEDLITE35	COSPOLICH	1	EA
30	LED LIGHT DRIVER—12 WATT	LEDLITE15HARN	LEDLITE15HARN	COSPOLICH	1	EA
31	STAINLESS STEEL SHELF	SSW29CX19B	COS-SSW29CX19B	NWP	1	EA
32	SHELF CLIPS	HXCS01	0066000004	KASON	4	EA
33	SHELF STANDARD 36"	HXSD36	0065007036	KASON	2	EA
34	ADJUSTABLE LEG **	HLEG63	1-1752F260T50S	KASON	4	EA
35	INTENTIONALLY LEFT BLANK	—————	—————	—————	—	—
36	ELECTRONIC HIGH-LOW TEMPERATURE ALARM ASSEMBLY**	HLTA01R-EC	HLTA01R-EC	COSPOLICH	1	EA
37	CONDENSER SENSOR, 59"	RWTS13	RWTS13	COSPOLICH	1	EA
38	CABINET SENSOR, 118"	RWTS14	RWTS14	COSPOLICH	1	EA
39	DEFROST SENSOR, 118"	RWTS15	RWTS15	COSPOLICH	1	EA
40	ELECTRONIC CONTROLLER RELAY, 30 AMP, 120V	PCCR64	886-0144	COSPOLICH	1	EA
41	PREPPED ELECTRONIC CONTROLLER ASSEMBLY	RWTL651-PM(L)	RWTL651-PM(L)	COSPOLICH	1	EA
42	ELECTRONIC CONTROLLER MOUNTING BRACKET	RUDCLIP01	RUDCLIP01	COSPOLICH	2	EA
43	ON/OFF TOGGLE SWITCH	LWTS01	2FA53-73-TABS	AE	1	EA
44	ELECTRONIC CONTROLLER DIGITAL DISPLAY	RWTT65	RWTT65	COSPOLICH	1	EA
45	TWIST LOCK DISCONNECT MALE/FEMALE	LEP019/LEP020	LEP019/LEP020	COSPOLICH	1	EA
46	DOOR ASSEMBLY	DB65S	DB65S	COSPOLICH	1	EA
47	DOOR LATCH	HXLH06	172BC	KASON	1	EA
48	DOOR HINGE	HXHE02	0217000008	KASON	2	EA
49	LATCH STRIKE	HXLH06-S	172-2	KASON	1	EA
50	MAGNETIC DOOR GASKET	GB65MV	02-070	JEANS	1	EA
51	AXIAL FAN MOTOR, 115V	RWEM26	RWEM26	COSPOLICH	2	EA
52	INTENTIONALLY LEFT BLANK	—————	—————	—————	—	—
53	INTENTIONALLY LEFT BLANK	—————	—————	—————	—	—
54	LOUVERED REAR GRILL	GR41-REAR	GR41-REAR	COSPOLICH	1	EA
55	LED LIGHT FIXTURE BRACKET	LEDLITE13	LEDLITE13	COSPOLICH	2	EA

Note: **Optional Accessory

Table J—Parts List for UCR15 Series

	ITEM	COSP#	MFG#	Vendor	QTY	U/M
1	COMPRESSOR	RWC145	AE1167E-212-J7	TECUMSEH	1	EA
2	LOW PRESSURE CONTROL	RWPL02	RWPL02	COSPOLICH	1	EA
3	FILTER DRYER	RWFD02	C-052-S	SPORLAN	1	EA
4	CONDENSER FAN MOTOR, 115V	RWCM55	810L006B94	EMERSON	1	EA
5	CONDENSER FAN BLADE	RWFB28	4VEA009	TECUMSEH	1	EA
6	PREPPED CONDENSING UNIT ASSEMBLY, 404A, 115V	RWC144-PM	RWC144-PM	COSPOLICH	1	EA
7	CONDENSER	RWCD95	50733-G04	TECUMSEH	1	EA
8	START CAPACITOR	RWCP121	K146-55	TECUMSEH	1	EA
9	CONDENSING UNIT OVERLOAD KIT	RWOVL92	K90-66	TECUMSEH	1	EA
10	CONDENSING UNIT RELAY	RWRLY121	K71-46	TECUMSEH	1	EA
11	INTENTIONALLY LEFT BLANK	—	—	—	—	—
12	COPPER TUBING WHEEL	RWCTW42M	RWCTW42M	COSPOLICH	1	EA
13	SIGHT GLASS	RWSG09	SA-K142	SPORLAN	1	EA
14	RECEIVER TANK	RWRT53	51085-1HV	TECUMSEH	1	EA
15	INTENTIONALLY LEFT BLANK	—	—	—	—	—
16	QUICK CONNECT FITTING, 1/4"	RWQF0406F / RWQF0406M	RWQF04060F / RWQF0406M	COSPOLICH	1 / 1	EA
17	QUICK CONNECT FITTING, 3/8"	RWQF0606F / RWQF0606M	RWQF06040F / RWQF060406M	COSPOLICH	1 / 1	EA
18	EXPANSION VALVE	RWEV27	109264-001	SPORLAN	1	EA
19	PREPPED EVAPORATOR COIL ASSEMBLY, 404A, 115V	RWE010-PM	RWE010-PM	COSPOLICH	1	EA
20	EVAPORATOR FAN COVER	RWE5054D	5054D	HEATCRAFT	1	EA
21	EVAPORATOR FAN BLADE	RWE5101B	5101B	HEATCRAFT	1	EA
22	EVAPORATOR FAN MOTOR, 115V	RWEM03	25300701	HEATCRAFT	1	EA
23	1/2" VINYL DRAIN LINE TUBING	CVT12	CVT12	COSPOLICH	5	EA
24	FRONT BREATHING GRILL WITH CUTOUT FOR ELECTRONIC CONTROLLER	GR42-FB-EC	GR42-FB-EC	COSPOLICH	1	EA
25	ANTI-CONDENSATE MULLION HEATER WIRE, 115V, 32°, 82V	L1HR82	64-200	RHS	2	EA
26	SECONDARY BREAKER STRIP, 19"	HXBS19	20-0110	JEANS	4	EA
27	SECONDARY BREAKER STRIP, 48"	HXBS48	20-6910	JEANS	2	EA
28	BREAKER STRIP CORNER	HXBSC01	19-0000	JEANS	8	EA
29	LED LIGHT	LEDLITE35	LEDLITE35	COSPOLICH	1	EA
30	LED LIGHT DRIVER—12 WATT	LEDLITE15HARN	LEDLITE15HARN	COSPOLICH	1	EA
31	STAINLESS STEEL SHELF	SSW23AX19B	SSW23AX19B	NWP	2	EA
32	SHELF CLIPS	HXCS01	0066000004	KASON	8	EA
33	SHELF STANDARD 36"	HXSD36	0065007036	KASON	4	EA
34	ADJUSTABLE LEG **	HLEG63	1-1752F260T50S	KASON	4	EA
35	INTENTIONALLY LEFT BLANK	—	—	—	—	—
36	ELECTRONIC HIGH-LOW TEMPERATURE ALARM ASSEMBLY**	HLTA01R-EC	HLTA01R-EC	COSPOLICH	1	EA
37	CONDENSER SENSOR, 59"	RWTS13	RWTS13	COSPOLICH	1	EA
38	CABINET SENSOR, 118"	RWTS14	RWTS14	COSPOLICH	1	EA
39	DEFROST SENSOR, 118"	RWTS15	RWTS15	COSPOLICH	1	EA
40	ELECTRONIC CONTROLLER RELAY, 30 AMP, 120V	PCCR64	886-0144	COSPOLICH	1	EA
41	PREPPED ELECTRONIC CONTROLLER ASSEMBLY	RWTL651-PM(L)	RWTL651-PM(L)	COSPOLICH	1	EA
42	INTENTIONALLY LEFT BLANK	—	—	—	—	—
43	ON/OFF TOGGLE SWITCH	LWTS01	2FA53-73-TABS	AE	1	EA
44	ELECTRONIC CONTROLLER DIGITAL DISPLAY	RWTT65	RWTT65	COSPOLICH	1	EA
45	TWIST LOCK DISCONNECT MALE/FEMALE	LEP019/LEP020	LEP019/LEP020	COSPOLICH	1	EA
46	DOOR ASSEMBLY	DA65S	DA65S	COSPOLICH	2	EA
47	DOOR LATCH	HXLH06	172BC	KASON	2	EA
48	DOOR HINGE	HXHE02	0217000008	KASON	4	EA
49	LATCH STRIKE	HXLH06-S	172-2	KASON	2	EA
50	MAGNETIC DOOR GASKET	GA65MV	GA65MV	JEANS	2	EA
51	AXIAL FAN MOTOR, 115V	RWEM26	RWEM56	COSPOLICH	2	EA
52	PLEXIGLAS VIEWING WINDOW, GRILL	HXPG15	HXPG15	COSPOLICH	1	EA
53	INTENTIONALLY LEFT BLANK	—	—	—	—	—
54	LOUVERED REAR GRILL	GR41-REAR	GR41-REAR	COSPOLICH	1	EA
55	LED LIGHT FIXTURE BRACKET	LEDLITE13	LEDLITE13	COSPOLICH	2	EA

Note: **Optional Accessory

Table K—Parts List for UCR20 Series

	ITEM	COSP#	MFG#	Vendor	QTY	U/M
1	COMPRESSOR	RWC145	AE1167E-212-J7	TECUMSEH	1	EA
2	LOW PRESSURE CONTROL	RWPL02	RWPL02	COSPOLICH	1	EA
3	FILTER DRYER	RWFD02	C-052-S	SPORLAN	1	EA
4	CONDENSER FAN MOTOR, 115V	RWCM55	810L006B94	EMERSON	1	EA
5	CONDENSER FAN BLADE	RWFB28	4VEA009	TECUMSEH	1	EA
6	PREPPED CONDENSING UNIT ASSEMBLY, 404A, 115V	RWC144-PM	RWC144-PM	COSPOLICH	1	EA
7	CONDENSER	RWCD95	50733-G04	TECUMSEH	1	EA
8	START CAPACITOR	RWCP121	K146-55	TECUMSEH	1	EA
9	CONDENSING UNIT OVERLOAD KIT	RWOVL92	K90-66	TECUMSEH	1	EA
10	CONDENSING UNIT RELAY	RWRLY121	K71-46	TECUMSEH	1	EA
11	INTENTIONALLY LEFT BLANK	—	—	—	—	—
12	COPPER TUBING WHEEL	RWCTW43M	RWCTW09M	COSPOLICH	1	EA
13	SIGHT GLASS	RWSG09	SA-K142	SPORLAN	1	EA
14	RECEIVER TANK	RWRT53	51085-1HV	TECUMSEH	1	EA
15	INTENTIONALLY LEFT BLANK	—	—	—	—	—
16	QUICK CONNECT FITTING, 1/4"	RWQF0406F / RWQF0406M	RWQF0406F / RWQF0406M	COSPOLICH	1 / 1	EA
17	QUICK CONNECT FITTING, 3/8"	RWQF0606F / RWQF0606M	RWQF0604F / RWQF0604M	COSPOLICH	1 / 1	EA
18	EXPANSION VALVE	RWEV27	109264-001	SPORLAN	1	EA
19	PREPPED EVAPORATOR COIL ASSEMBLY, 404A, 115V	RWE010-PM	RWE010-PM	COSPOLICH	1	EA
20	EVAPORATOR FAN COVER	RWE5054D	5054D	HEATCRAFT	1	EA
21	EVAPORATOR FAN BLADE	RWE5101B	5101B	HEATCRAFT	1	EA
22	EVAPORATOR FAN MOTOR, 115V	RWEM03	25300701	HEATCRAFT	1	EA
23	1/2" VINYL DRAIN LINE TUBING	CVT12	CVT12	COSPOLICH	5	EA
24	FRONT BREATHING GRILL WITH CUTOUT FOR ELECTRONIC CONTROLLER	GR43-FB-EC	GR43-FB-EC	COSPOLICH	1	EA
25	ANTI-CONDENSATE MULLION HEATER WIRE, 115V, 32 °, 104"	L1HR104	64-200	RHS	3	EA
26	SECONDARY BREAKER STRIP, 48"	HXBS48	20-6900	JEANS	4	EA
27	INTENTIONALLY LEFT BLANK	—	—	—	—	—
28	BREAKER STRIP CORNER	HXBSC01	19-0000	JEANS	12	EA
29	LED LIGHT FIXTURE	LEDLITE35	LEDLITE35	COSPOLICH	1	EA
30	LED LIGHT DRIVER—12 WATT	LEDLITE15HARN	LEDLITE15HARN	COSPOLICH	1	EA
31	STAINLESS STEEL SHELF	SSW31CX19B	SSW31CX19B	COSPOLICH	2	EA
32	SHELF CLIPS	HXCS01	0066000004	KASON	8	EA
33	SHELF STANDARD 36"	HXSD36	0065007036	KASON	4	EA
34	ADJUSTABLE LEG **	HLEG63	1-1752F260T50S	KASON	6	EA
35	INTENTIONALLY LEFT BLANK	—	—	—	—	—
36	ELECTRONIC HIGH-LOW TEMPERATURE ALARM ASSEMBLY**	HLTA01R-EC	HLTA01R-EC	COSPOLICH	1	EA
37	CONDENSER SENSOR, 59"	RWTS13	RWTS13	COSPOLICH	1	EA
38	CABINET SENSOR, 118"	RWTS14	RWTS14	COSPOLICH	1	EA
39	DEFROST SENSOR, 118"	RWTS15	RWTS15	COSPOLICH	1	EA
40	ELECTRONIC CONTROLLER RELAY, 30 AMP, 120V	PCCR64	886-0144	COSPOLICH	1	EA
41	PREPPED ELECTRONIC CONTROLLER ASSEMBLY	RWTL651-PM(L)	RWTL651-PM(L)	COSPOLICH	1	EA
42	ELECTRONIC CONTROLLER MOUNTING BRACKET	RUDCLIP01	RUDCLIP01	COSPOLICH	2	EA
43	ON/OFF TOGGLE SWITCH	LWTS01	2FA53-73-TABS	AE	1	EA
44	ELECTRONIC CONTROLLER DIGITAL DISPLAY	RWTT65	RWTT65	COSPOLICH	1	EA
45	TWIST LOCK DISCONNECT MALE/FEMALE	LEP019	LEP019	COSPOLICH	1	EA
46	DOOR ASSEMBLY	DB65S	DB65S	COSPOLICH	2	EA
47	DOOR LATCH	HXLH06	172BC	KASON	2	EA
48	DOOR HINGE	HXHE02	0217000008	KASON	4	EA
49	LATCH STRIKE	HXLH06-S	172-2	KASON	2	EA
50	MAGNETIC DOOR GASKET	GB65MV	GB65MV	JEANS	2	EA
51	AXIAL FAN MOTOR, 115V	RWEM26	RWEM6	COSPOLICH	2	EA
52	HINGE STOP	HXHE13	0217500008	KASON	1	EA

Note: **Optional Accessory

Table K—Parts List for UCR30 Series

	ITEM	COSP#	MFG#	Vendor	QTY	U/M
1	COMPRESSOR	RUT391	AK174AT-0388-A9-8-952	TECHUMSEH	1	EA
2	LOW PRESSURE CONTROL	RWPL02	RWPL02	COSPOLICH	1	EA
3	FILTER DRYER	RWFD02	400249-007	SPORLAN	1	EA
4	CONDENSER FAN MOTOR, 115V	RWCM06	810M009B48	TECUMSEH	1	EA
5	CONDENSER FAN BLADE	RWFB05	51551	TECUMSEH	1	EA
6	PREPPED CONDENSING UNIT ASSEMBLY, 404A, 115V	RUT390-PM	RUT390-PM	COSPOLICH	1	EA
7	CONDENSER	RWCD14	50840-1	TECUMSEH	1	EA
8	START CAPACITOR	RWCP47	85PS165A53	TECUMSEH	1	EA
9	CONDENSING UNIT OVERLOAD KIT	RWOVL38	8300CCRAN21	TECUMSEH	1	EA
10	CONDENSING UNIT RELAY	RWRLY07	82498-1	TECUMSEH	1	EA
11	INTENTIONALLY LEFT BLANK	—	—	—	—	—
12	COPPER TUBING WHEEL	RWCTW44M	RWCTW44M	COSPOLICH	1	EA
13	SIGHT GLASS	RWSG09	701012	SPORLAN	1	EA
14	RECEIVER TANK	RWRT03	51080-1	TECUMSEH	1	EA
15	INTENTIONALLY LEFT BLANK	—	—	—	—	—
16	QUICK CONNECT FITTING, 1/4"	RWQF0406F / RWQF0406M	RWQF0406F / RWQF0406M	COSPOLICH	1 / 1	EA
17	QUICK CONNECT FITTING, 3/8"	RWQF0606F / RWQF0606M	RWQF06040F / RWQF060406M	COSPOLICH	1 / 1	EA
18	EXPANSION VALVE	RWEV27	109264-001	SPORLAN	1	EA
19	PREPPED EVAPORATOR COIL ASSEMBLY, 404A, 115V	RWE030-PM	RWE030-PM	COSPOLICH	1	EA
20	EVAPORATOR FAN COVER	RWE5054D	5054D	HEATCRAFT	3	EA
21	EVAPORATOR FAN BLADE	RWE5101B	5101B	HEATCRAFT	3	EA
22	EVAPORATOR FAN MOTOR, 115V	RWEM03	25300701	HEATCRAFT	3	EA
23	1/2" VINYL DRAIN LINE TUBING	CVT12	CVT12	COSPOLICH	10	EA
24	BUMP OUT FRONT BREATHING GRILL WITH CUTOUT FOR ELECTRONIC CONTROLLER	GR44-FB-EC	GR44-FB-EC	COSPOLICH	1	EA
25	ANTI-CONDENSATE MULLION HEATER WIRE, 115V, 32 °, 99"	L1HR99	64-200	RHS	3	EA
26	SECONDARY BREAKER STRIP, 27"	HXBS27	20-0100	JEANS	6	EA
27	SECONDARY BREAKER STRIP, 48"	HXBS48	20-6910	JEANS	6	EA
28	BREAKER STRIP CORNER	HXBSC01	19-0000	JEANS	12	EA
29	LED LIGHT	LEDLITE35	LEDLITE35	COSPOLICH	2	EA
30	LED LIGHT DRIVER—12 WATT	LEDLITE15HARN	LEDLITE15HARN	COSPOLICH	1	EA
31	STAINLESS STEEL SHELF	SSW30BX19B	SSW30BX19B	NWP	3	EA
32	SHELF CLIP	HXCS01	0066000004	KASON	12	EA
33	SHELF STANDARD 36"	HXSD36	0065007036	KASON	12	EA
34	ADJUSTABLE LEG ** **	HLEG63	1-1752F260T50S	KASON	6	EA
35	INTENTIONALLY LEFT BLANK	—	—	—	—	—
36	ELECTRONIC HIGH-LOW TEMPERATURE ALARM ASSEMBLY**	HLTA01R-EC	HLTA01R-EC	COSPOLICH	1	EA
37	CONDENSER SENSOR, 59"	RWTS13	RWTS13	COSPOLICH	1	EA
38	CABINET SENSOR, 118"	RWTS14	RWTS14	COSPOLICH	1	EA
39	DEFROST SENSOR, 118"	RWTS15	RWTS15	COSPOLICH	1	EA
40	ELECTRONIC CONTROLLER RELAY, 30 AMP, 120V	PCCR64	886-0144	COSPOLICH	2	EA
41	PREPPED ELECTRONIC CONTROLLER ASSEMBLY	RWTL651-PM(L)	RWTL651-PM(L)	COSPOLICH	1	EA
42	ELECTRONIC CONTROLLER MOUNTING BRACKET	RUDCLIP01	RUDCLIP01	COSPOLICH	2	EA
43	ON/OFF TOGGLE SWITCH	LWTS01	2FA53-73-TABS	AE	1	EA
44	ELECTRONIC CONTROLLER DIGITAL DISPLAY	RWTT65	RWTT65	COSPOLICH	1	EA
45	TWIST LOCK DISCONNECT MALE/FEMALE	LEP019/LEP020	LEP019/LEP020	COSPOLICH	1 / 1	EA
46	DOOR ASSEMBLY	DE65S	DE65S	COSPOLICH	3	EA
47	DOOR LATCH	HXLH06	172BC	KASON	3	EA
48	DOOR HINGE	HXHE02	0217000008	KASON	6	EA
49	LATCH STRIKE	HXLH06-S	172-2	KASON	5	EA
50	MAGNETIC DOOR GASKET	GE65MV	GE65MV	JEANS	3	EA
51	AXIAL FAN MOTOR, 115V	RWEM26	RWEM26	COSPOLICH	2	EA
52	PLEXIGLAS VIEWING WINDOW, GRILL	HXPG15	HXPG15	COSPOLICH	1	EA
53	INTENTIONALLY LEFT BLANK	—	—	—	—	—
54	LOUVERED REAR GRILL	GR41-REAR	GR41-REAR	COSPOLICH	1	EA
55	LED LIGHT FIXTURE BRACKET	LEDLITE13	LEDLITE13	COSPOLICH	2	EA

Note: **Optional Accessory

UCR5, UCR10, UCR15 & UCR20 Series
Illustrations 7.1 – RWC144-PM Prepped Condensing Unit Assembly (6)

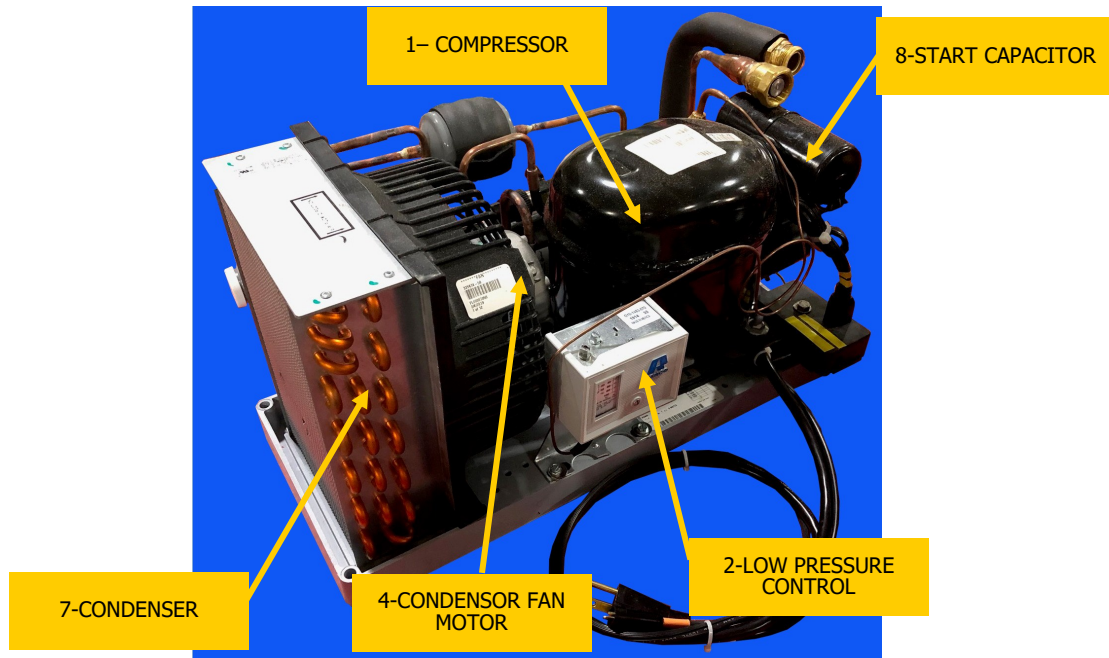


Illustration 7.1A

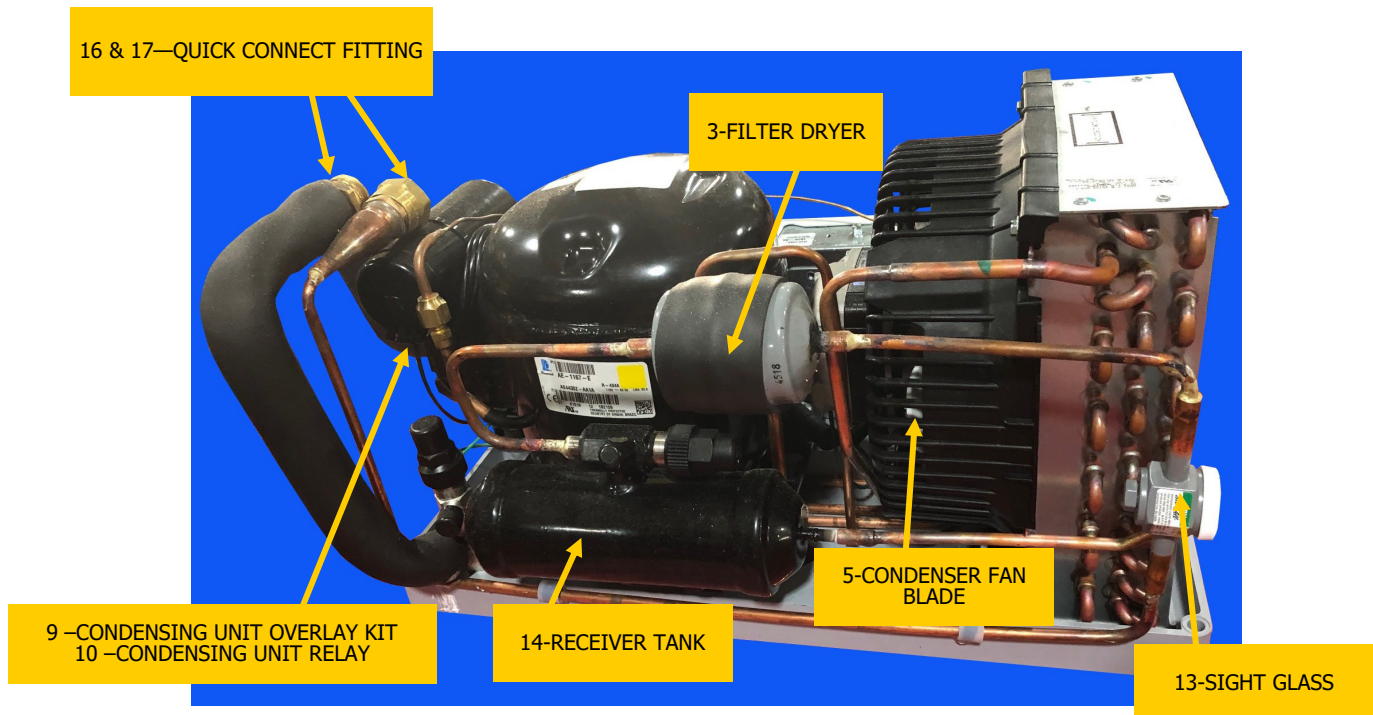


Illustration 7.1B

*Referenced numbers correspond with numbers from Part's List found on page 37 - 40.

UCR30 Series

Illustrations 7.2 – RUT390-PM Prepped Condensing Unit Assembly (6)

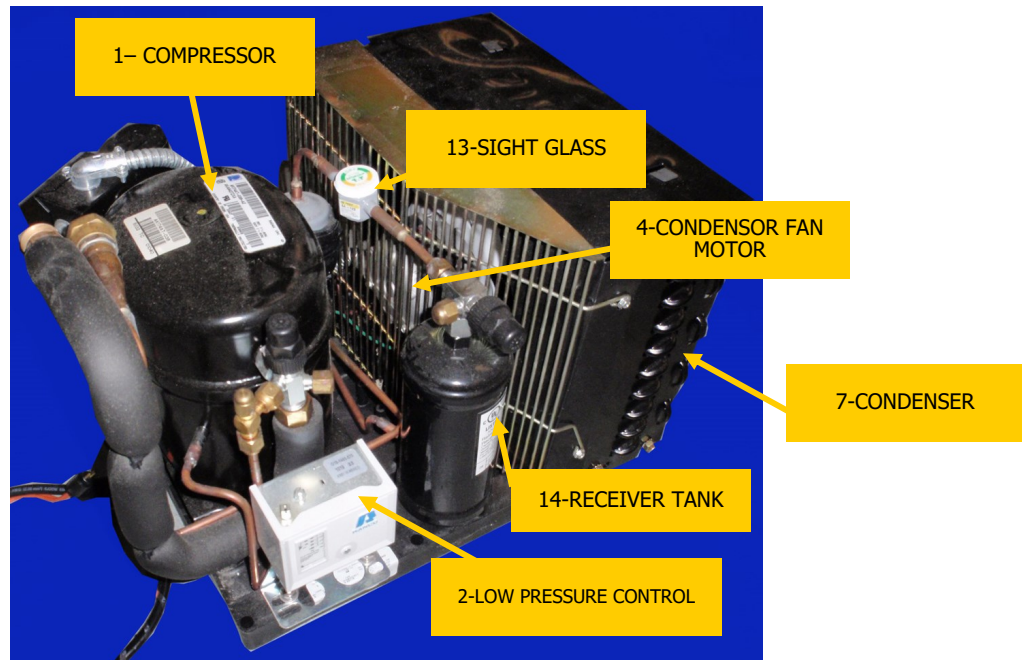


Illustration 7.2A

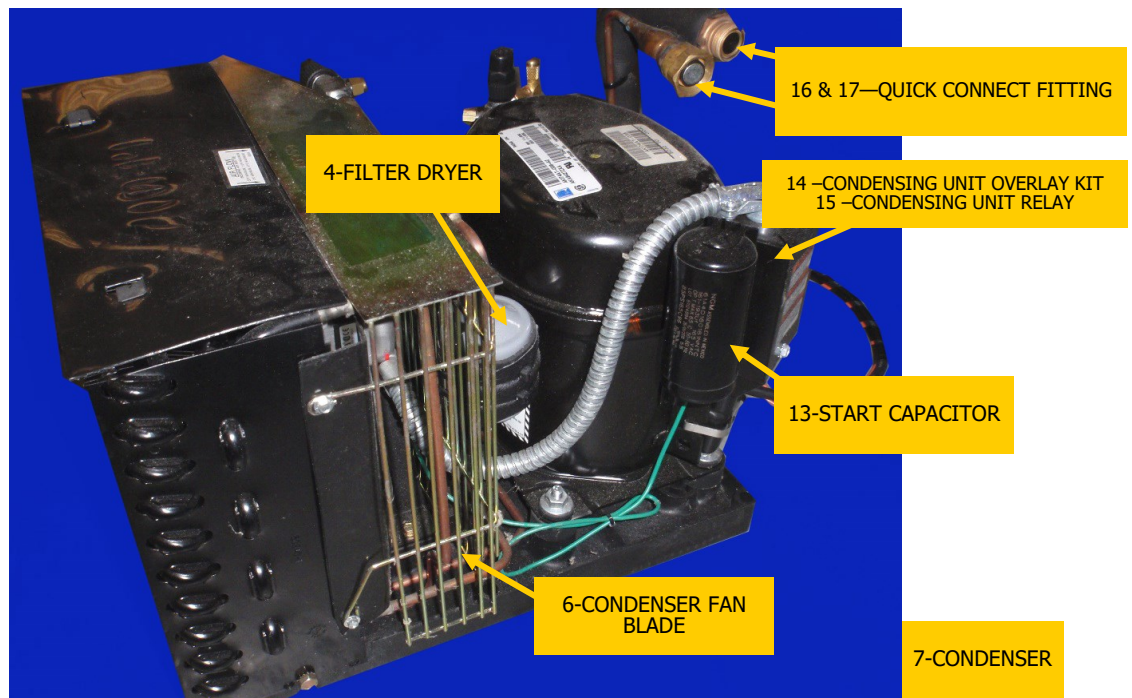


Illustration 7.2B

*Referenced numbers correspond with numbers from Part's List found on page 41.

UCR5, UCR10, UCR15 & UCR20 Series
Illustrations 7.3—RWE010-PM, Prepped Evaporator Coil Assembly (19)

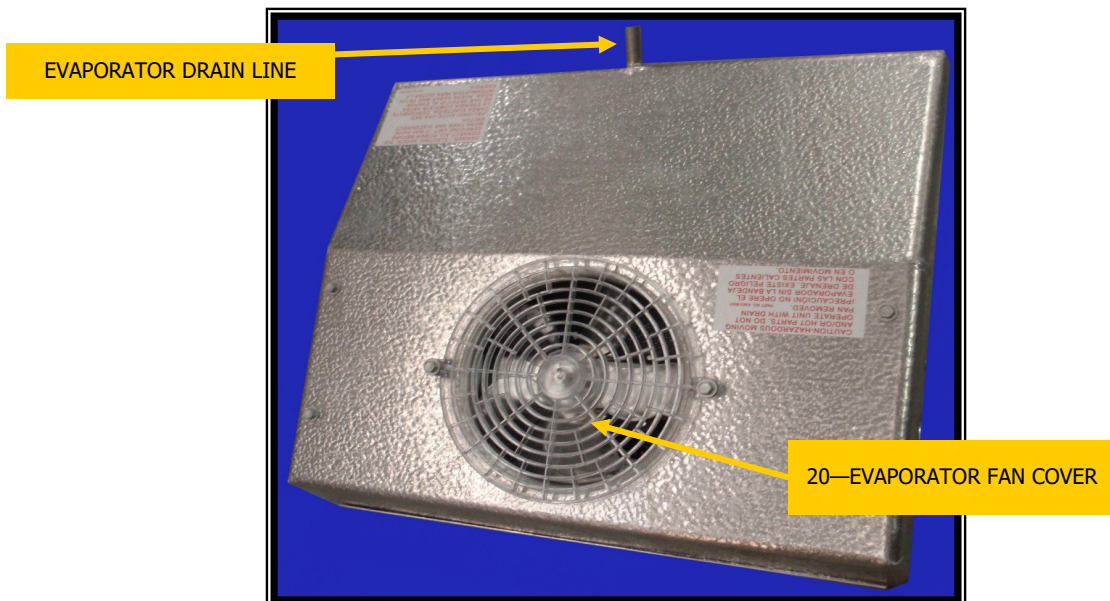


Illustration 7.3A

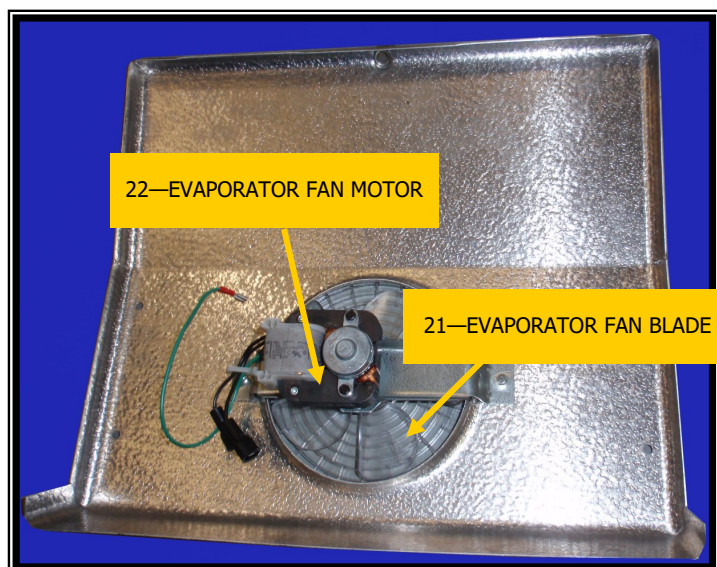


Illustration 7.3B

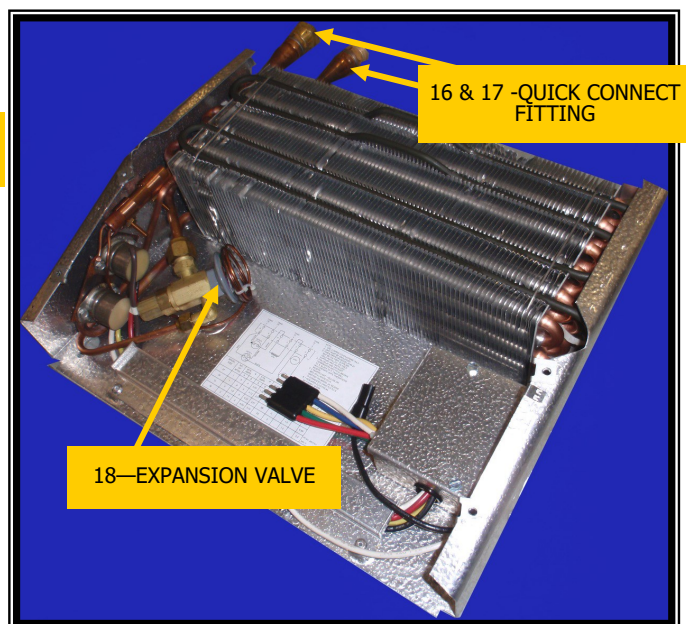


Illustration 7.3C

*Referenced numbers correspond with numbers from Part's List found on page 37 - 40.

UCR30 Series

Illustrations 7.4—RWE030-PM, Prepped Evaporator Coil Assembly (19)

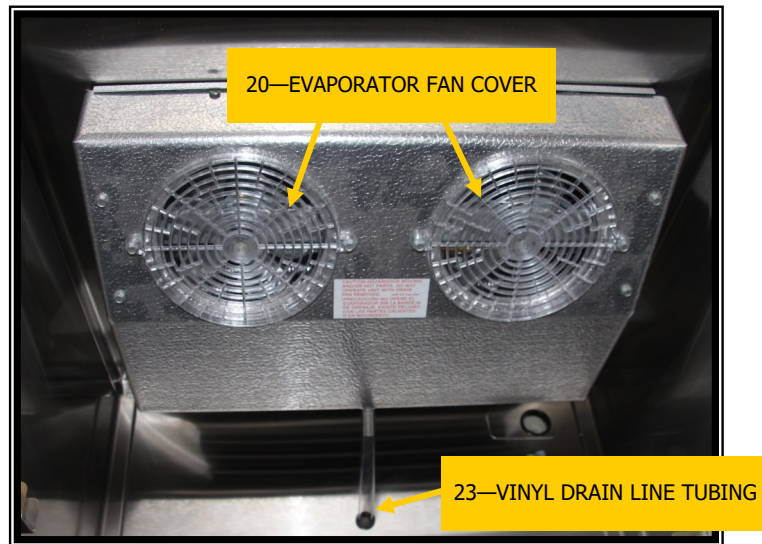


Illustration 7.4A

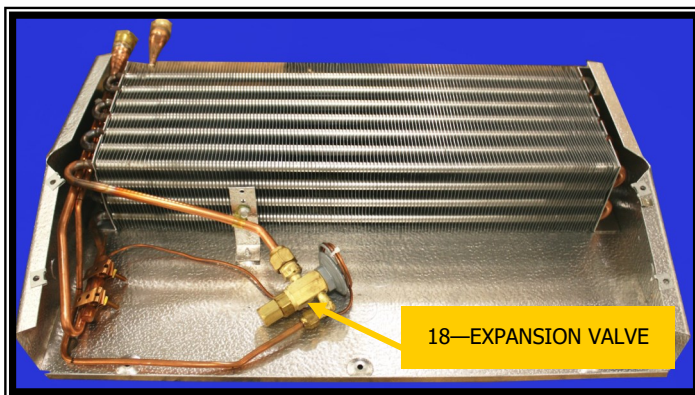


Illustration 7.4B

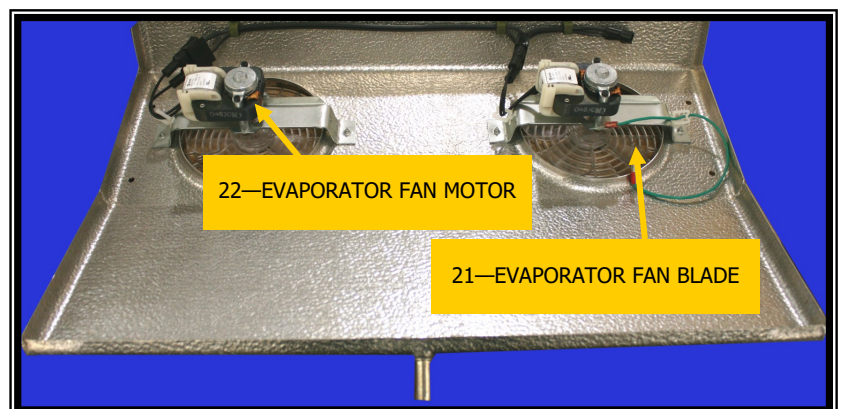


Illustration 7.4C

*Referenced numbers correspond with numbers from Part's List found on page 41.

UCR5, UCR10, UCR15, UCR20 & UCR30 Series

Illustrations 7.5— RWTL651-PM(L), Prepped Electronic Controller Assembly (41)

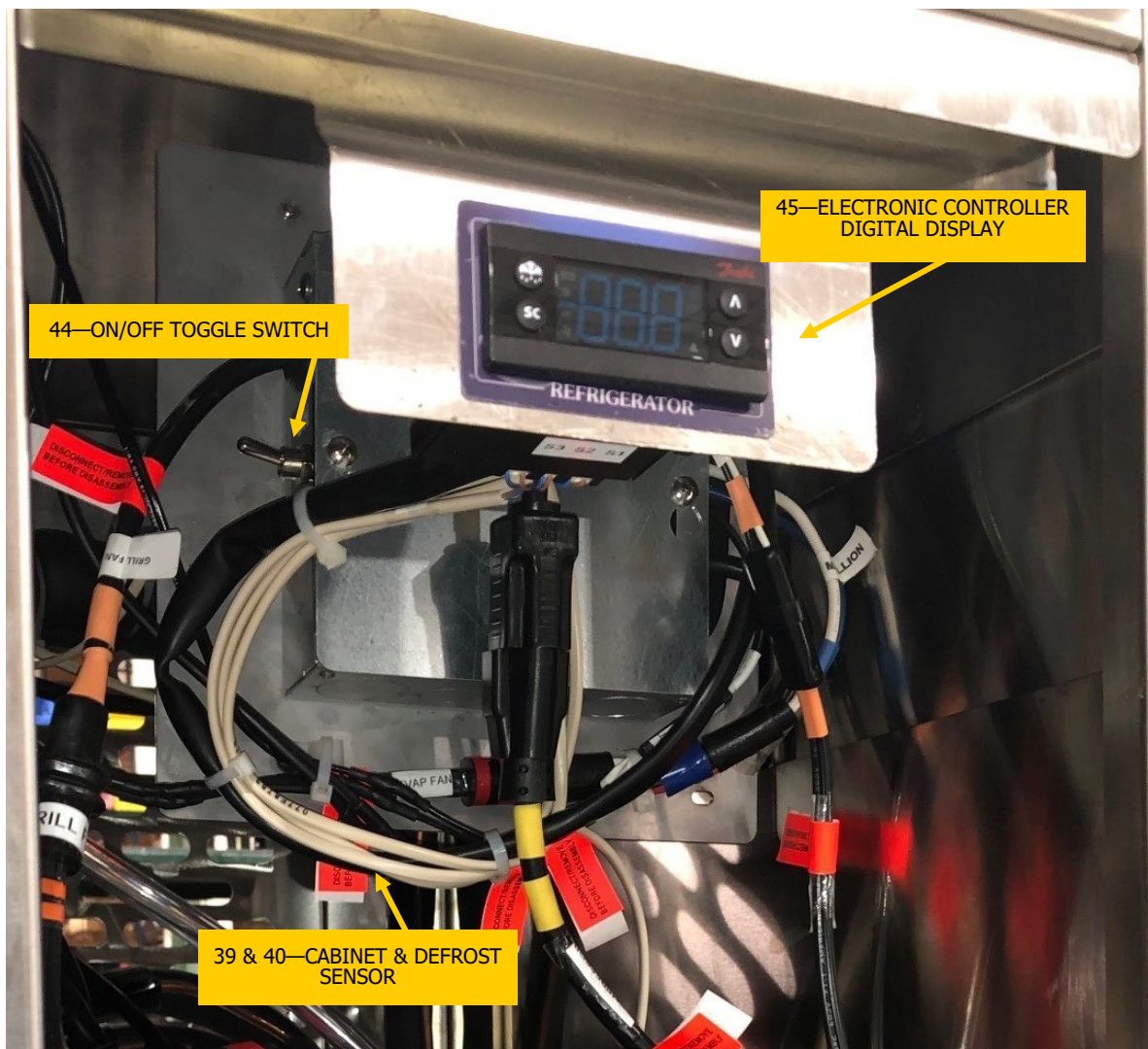


Illustration 7.5

*Referenced numbers correspond with numbers from Part's List found on page 37 - 41.

UCR5, UCR10, UCR15, UCR20 & UCR30 Series
Illustration 7.6 — Interior Detail

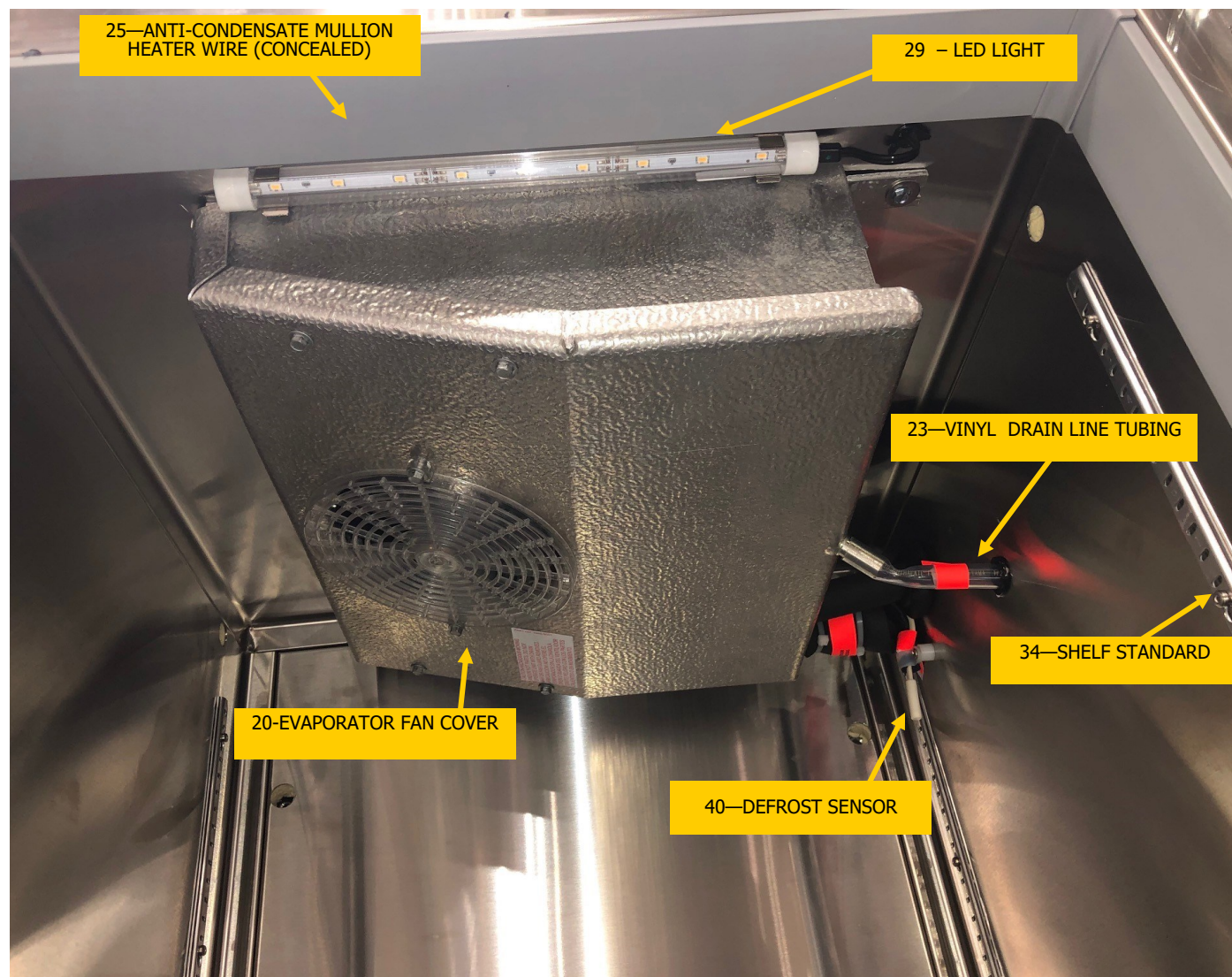


Illustration 7.6

*Referenced numbers correspond with numbers from Part's List found on page 37 - 41
*Evaporator Assemblies varies within each series.

UCR5, UCR10, UCR15, UCR20 & UCR30 Series

Illustrations 7.7—Main Unit & Door Detail

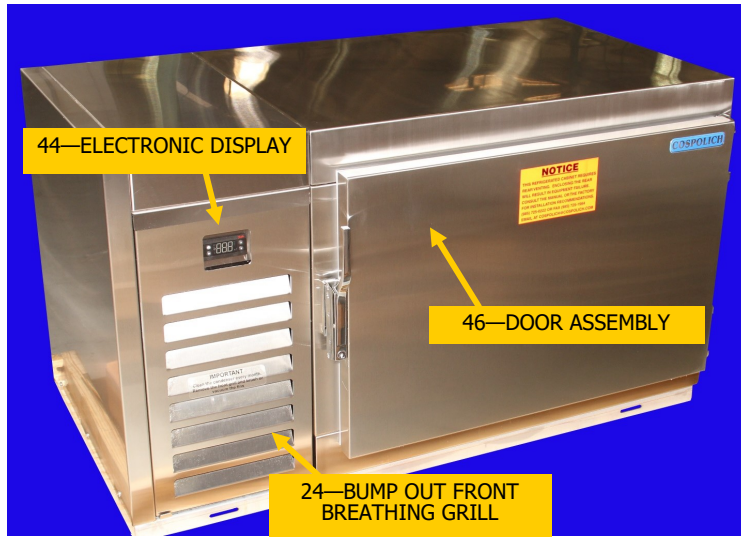


Illustration 7.7A



Illustration 7.7C

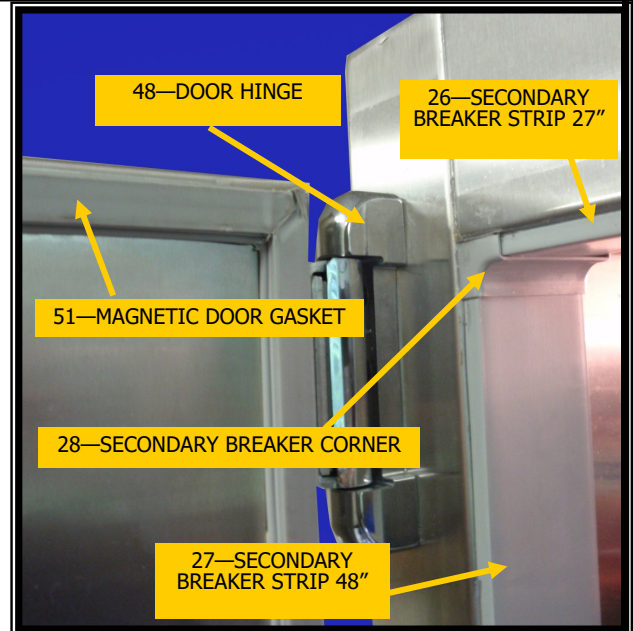


Illustration 7.7B

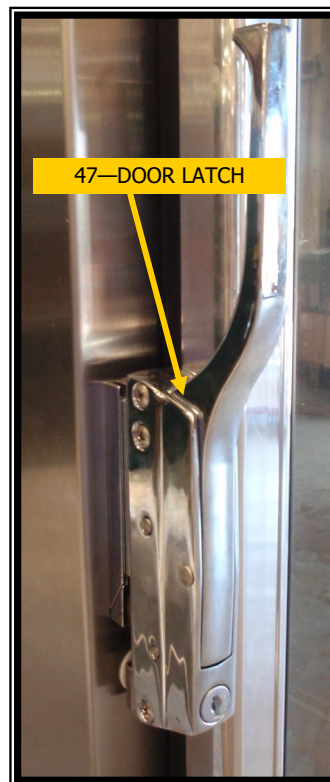


Illustration 7.7D



Illustration 7.7E

*Referenced numbers correspond with numbers from Part's List found on page 37 - 41.

UCR5, UCR10, UCR15, UCR20 & UCR30 Series

Illustrations 7.8—Accessories

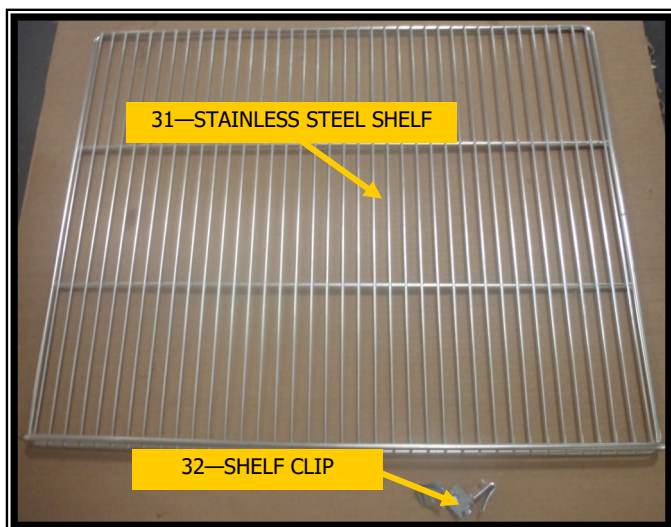


Illustration 7.8A
Shelving & Shelf Clip



Illustration 7.8B
Adjustable Legs



Illustration 7.8C
Optional High-Low Alarm

Chapter 8—Installation

8.1 Unpacking

Note: Before unpacking unit, note any crating markings and check for damage to crating and notify the carrier if there should appear to be damage to the equipment.

The unit is shipped from the factory securely fastened to a single shipping pallet protected by an external wrapping.

1. Carefully remove all external wrappings and other protective coverings.
2. Review the installation section of the manual completely prior to installing
3. Discard crating materials.

8.2 Installation

Note: Clean the deck and immediate area prior to any installation. Allow the area to dry prior to beginning the installation process.

1. Before moving the unit to the installation site, double-check passageways to make certain that it will move through without modifications.

Note: In certain instances, it may be necessary to remove the doors and hardware to negotiate tight spaces.

2. On most shipboard applications, a permanent base is fabricated by the ship builder to accommodate the base frame of the unit. If required Cospolich can furnish a foundation which can be attached to the deck.

Note: Not required on units with legs.

Caution: If cabinet does not have adequate clearance or ventilation, overheating of components may occur, resulting in damage to the equipment.

3. Position the unit to allow sufficient ventilation, usually leave a 3" clearance from adjacent bulkheads and other equipment.



4. Level the cabinet from front to back and from side to side. This is important so that when securing to the deck base, the cabinet will not be pulled out of square.

Note: Not required on units with legs.

5. Once the cabinet has been attached to the ship's foundation, it is necessary to apply a silicone sealant around the complete perimeter at the point that the cabinet base contacts the foundation.

Caution: LOW OR EXCESSIVE VOLTAGE CAN SEVERELY DAMAGE THE ELECTRICAL SYSTEM.

6. Before applying electrical power to the unit, you should first check the electrical characteristics of the appliance and make certain that they agree with those of the electrical supply source.



Chapter 9—Modular Installation

9.1 Introduction

By design the modular version of the UCR5, UCR10, UCR15, UCR20& UCR30 Series Freezers have been engineered and manufactured to be disassembled and reassembled aboard ship. By following these instructions you can be guaranteed a successful installation. Should questions arise or assistance become necessary, please call Cospolich customer service at (800) 423-7761. Email at cospolich@cospolich.com.

9.2 Installation Skill Level

In general, the skill level of the installer should be of a journeyman class in the area of mechanic. The primary process will require the following written instructions, use of common tools, and the proper fitting and alignment of the components. The electrical portion of the installation will be minimal, only requiring the unit to be plugged in and all electrical voltages verified.

9.3 Tools

A special wrench was furnished with the cabinet which is needed to operate the camlocks used in the assembly of the equipment. Other common tools required are standard/Phillips screwdrivers and wrenches. If the equipment is to be attached to a foundation, it may be necessary to drill holes.

9.4 Primary Components

Bottom with Condensing Unit/Controls Compartment/Base, Left End, Right End, Back, Top, Prepped Evaporator Coil Assembly, Prepped Condensing Unit Assembly, Electronic Controller Assembly & Condensing Unit Slide Assembly, Front Door

9.5 Disassembly

1. Remove 6 ea screws holding the 2 ea hinges onto the cabinet. Remove the door.
2. On the interior of the unit, remove the screws holding the evaporator coil drain line cover in place, then remove the stainless steel drain line cover.
3. Remove the 4 ea screws holding the exterior housing cover in place on the evaporator coil assembly. Remove the outer evaporator coil housing cover.
4. Remove the cabinet sensor bulb from the rear wall/back of the unit.
5. Disconnect the modular quick connect refrigeration fittings to the evaporator coil assembly.
6. Loosen/remove the 2 ea screws holding the rear of the evaporator coil assembly to the top of the unit. Loosen/remove the 3 ea zip screws holding the front of the evaporator coil assembly to the top of the unit. Remove the evaporator coil assembly.

7. Remove the 2 ea rear tubing covers on the exterior back of the cabinet.
8. Pull/remove the cabinet sensor bulb and cover through the refrigeration holes to the exterior back of the cabinet.
9. Remove the front louvered grill.
10. Unbolt the 2 ea bolts to the condensing unit slide assembly using a 3/8" nut driver. Slide out the condensing unit slide assembly. Disconnect both the electrical and refrigeration quick connect fittings. Remove the condensing unit, electronic controller, and slide assembly.
11. Disconnect all polarized connections at the electronic controller assembly adjacent to the condensing unit assembly.

Note: *It is not necessary to remove the electronic controller assembly.*

12. Using the camlock wrench provided, loosen all perimeter camlocks around the top panel. Lift and remove the top panel.
13. Loosen all perimeter camlocks securing the left end panel. Remove the left end panel.
14. Loosen all perimeter camlocks securing the back/rear panel. Remove the back/rear panel.
15. Loosen all perimeter camlocks securing the right end panel. Remove the right end panel.
16. Reverse the process to properly assemble and install the unit.
17. During installation, prior to installation of the door, the anti-condensate perimeter mullion heater must be installed around the door perimeter adjacent to the primary breaker strips. The secondary breaker strips must then be installed over the primary breaker strips.

Note: *When reassembling the unit on site, all panels must be sealed with beads of gray NSF grade silicone (provided) in all female joints. This ensures a proper seal between panels and prevents air, heat, and liquid infiltration. Gray plugs must also be in place in all camlock holes when sealing the unit prior to initial use. A squirt of silicone in each camlock hole is also recommended for a proper seal. After all panels are assembled, silicone all interior and exterior seams for a final seal.*

Chapter 10—Electrical and Mechanical Schematics

10.1 Introduction

This section of the manual contains drawings and schematics of the electrical and piping systems.

Illustration 10.11—Mechanical Piping Diagram for Refrigerator

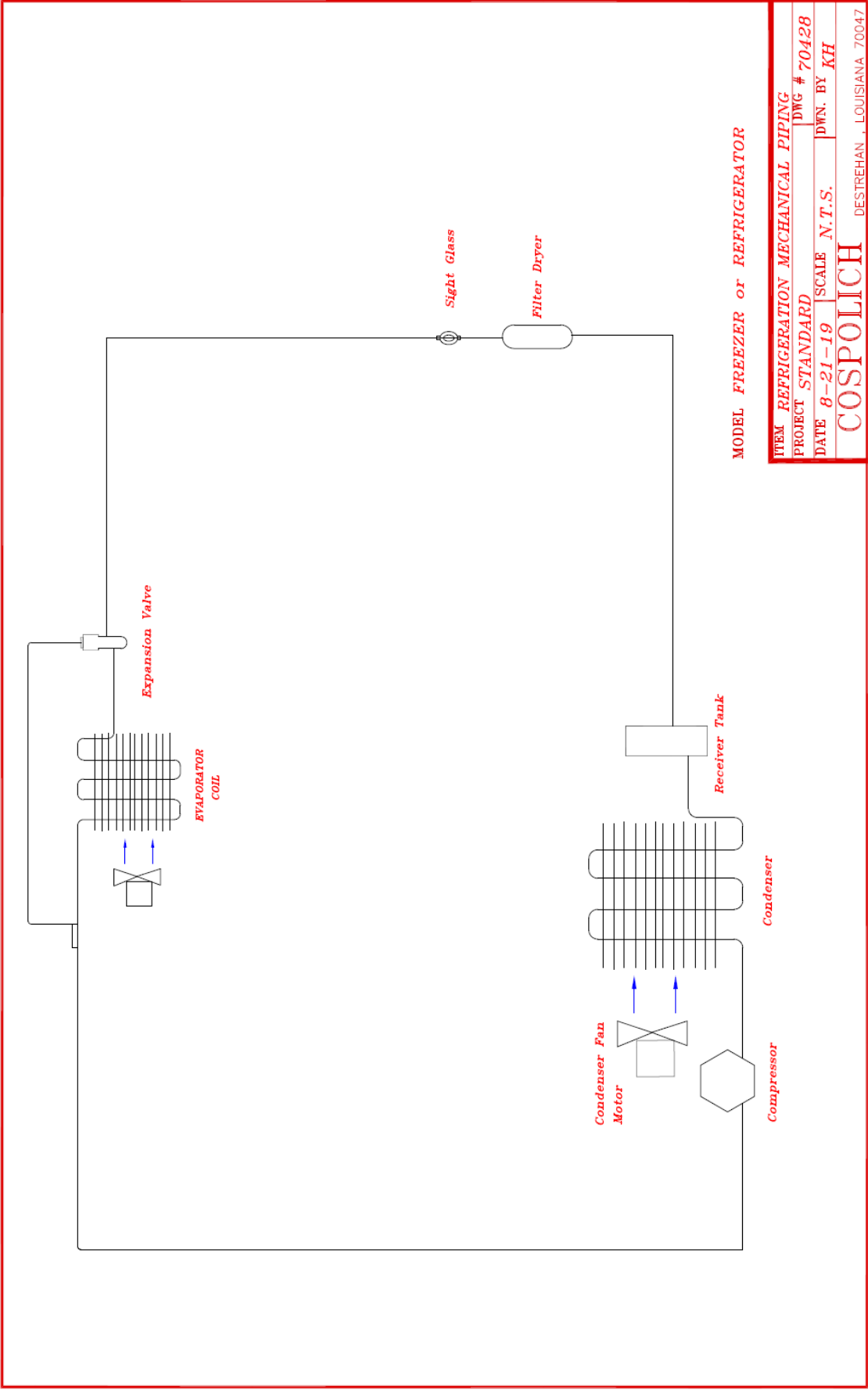


Illustration 10.21—Electrical Schematic (Freezer Electronic Controls)

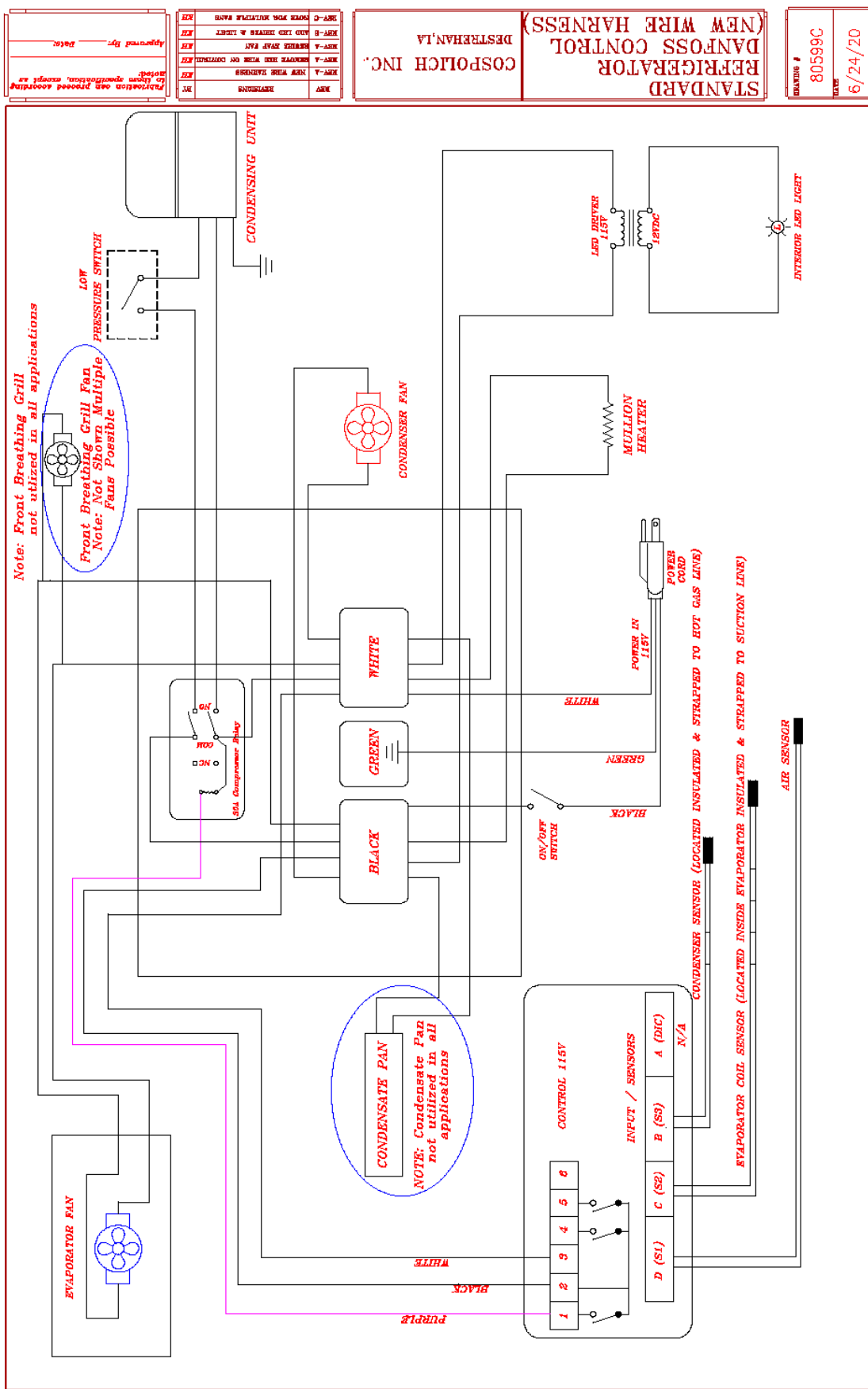
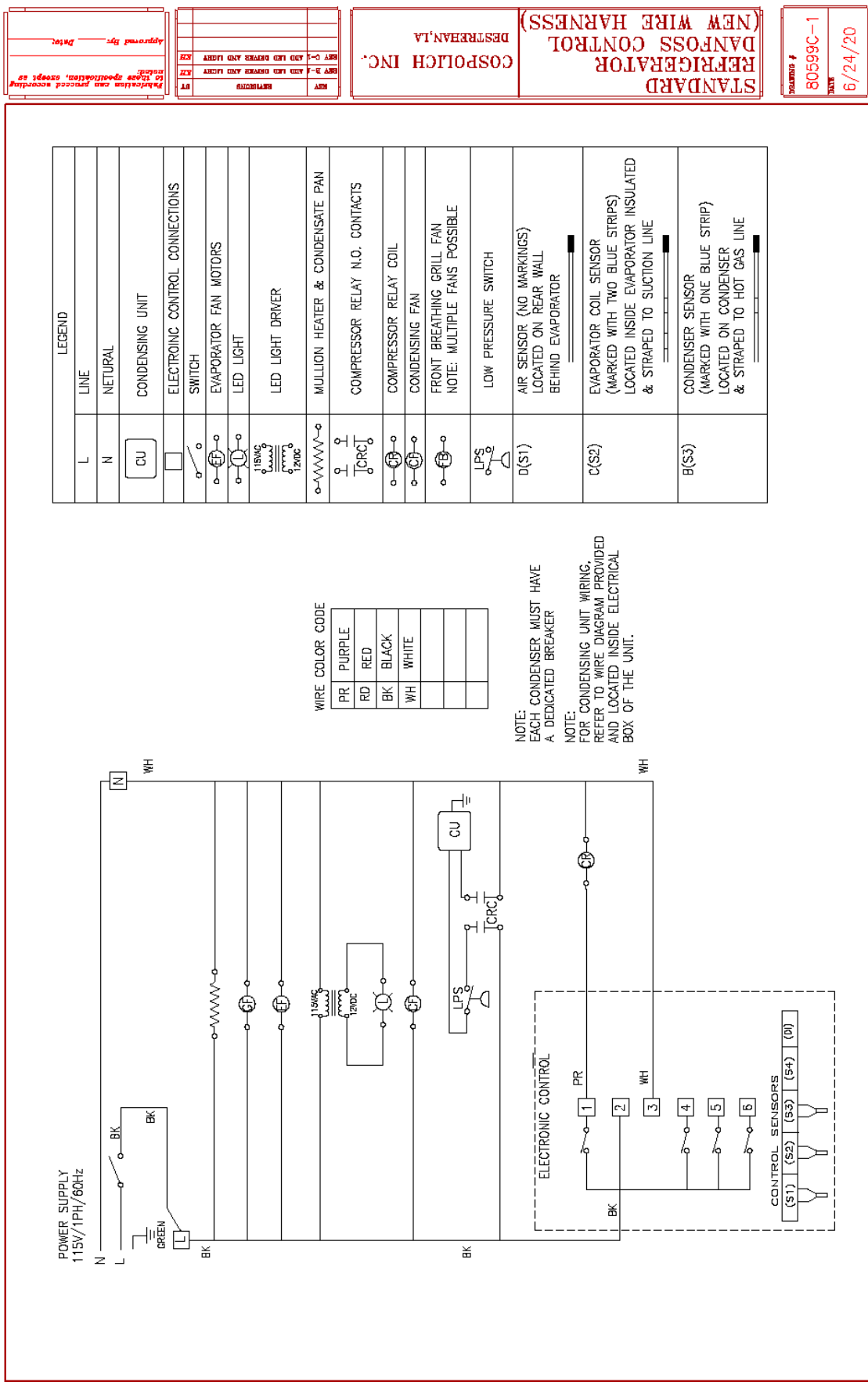


Illustration 10.22—Mechanical Piping Diagram for Refrigerator



Chapter 11—Limited Warranty

Rev. E 1/3/2014

Cospolich Inc. warrants their cabinets to consumers against defects in material or workmanship under normal use and service for a period of one year from the date of the installation, or if not immediately installed upon receipt, eighteen (18) months from the date of shipment from the manufacturer, whichever is earlier. Cospolich, at its sole and absolute discretion, will repair or replace any part, assembly, or portion thereof which Cospolich's examination determines to be defective. Cospolich reserves the right to request the customer to provide additional information, perform minor tasks to fully understand the issue, or perform simple part changing, when applicable. Cospolich will pay the labor costs of one technician for the repair up to twelve (12) months from date of shipment. Labor includes reasonable straight time labor charges to correct defective parts. Customer is responsible for any expedited and/or overtime services as well as any special security, safety or location requirements (i.e. TWIC cards, BOSIET certificate, etc).

Terms

Limitations and Exclusions

Cospolich's obligations under this warranty shall not extend to any malfunction or other problem caused by unreasonable use, such as but not limited to, improper start-up procedures, improper setting of controls, improper installation, incorrect voltage supply, loose electrical connections or blown fuses, and/or damage not attributable to a defect in workmanship. This warranty shall not apply to any cabinet or component part that has been suspect to any accident, alteration, abuse, misuse to any damage caused in fire, flood, or other acts of God and to any product that has been serviced by an unauthorized service person or company. Normal wear and tear or gradual deterioration and depreciation is excluded from this warranty. On units where Cospolich did not provide a sealed system with all components or equipment (i.e. remote units), Cospolich will only warranty the parts of its respective equipment for twelve (12) months.

To Secure Warranty Service

If you claim a defect under this warranty, direct your claim to whom you purchased the product, giving model and serial numbers with a description of the problem. *NOTE: Lack of model and serial numbers may delay processing of the warranty claim.* Telephone calls should be directed to the service department at (800) 423-7761 or (985) 725-0222 with fax request going to (985) 725-1564 and email requests sent to service@cospolich.com.

If the above procedure fails to satisfy your claim, you may write directly to the following address including the above identifying information.

**DIRECTOR of CUSTOMER RELATIONS
COSPOLICH INC.
P.O. BOX 1206
DESTREHAN, LA 70047**

There is no other express warranty on the Cospolich units except the terms stated herein. Any implied warrants of fitness and merchantability are limited in time to the duration of this Warranty. The liabilities of Cospolich are limited solely and exclusively to replacement as stated herein and do not include any liability for any incidental, consequential or other damages of any kind whatsoever, whether any claim is based upon theories of contract negligence or tort. Cospolich reserves the right to invoice and collect from the customer for actual and replacement costs in the event the warranty claim is deemed to be a nuisance claim, negligence and/or not associated with a defective product or part. Some states do not allow limitations on how long an implied warranty lasts, or the exclusion of limitations of incidental or consequential damages. So the above limitations and exclusions may not apply to you. This warranty gives you specific legal rights and you may also have other rights that vary from state to state.

Appendix 1-Revision History

[illegible]