



Shipboard Hot-Cold Serving Line Dresser
Technical Manual

Installation, Operation, and Maintenance Instructions
Models:

LPD246

USS Mesa Verde
(LPD-19)

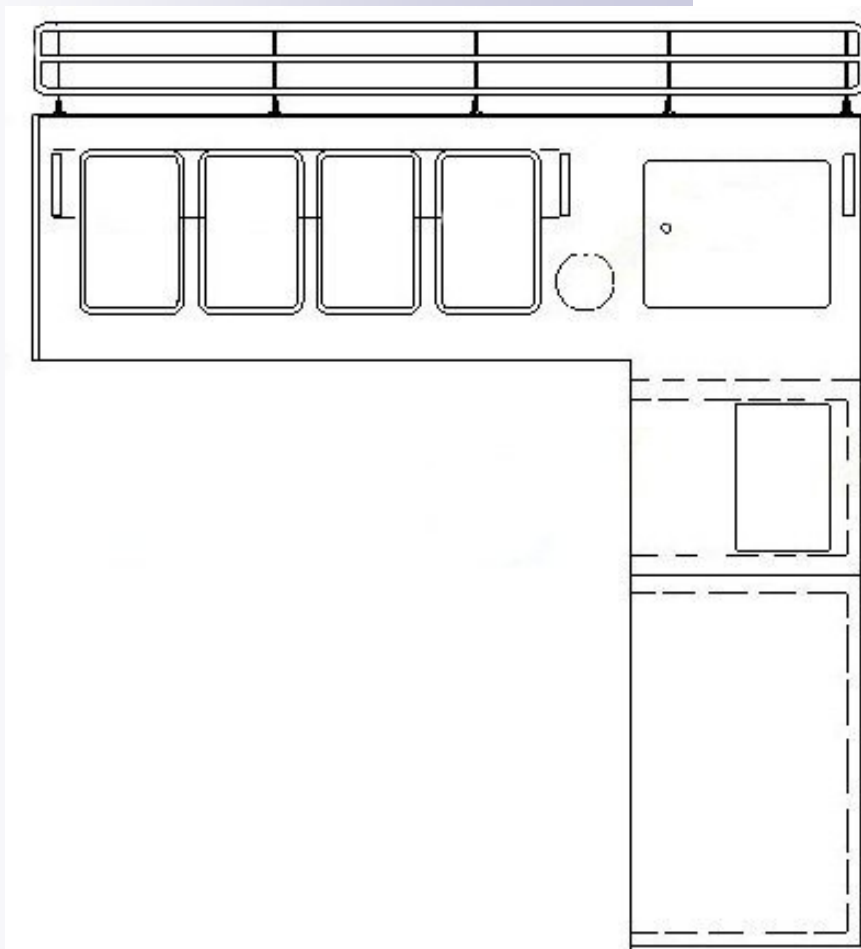


Table of Contents

Drawings

1.A General Arrangement Drawing.....	3
1.B Refrigerated Base Drawing.....	4
1.C Heated Dresser Drawing.....	5
1.D Display Drawing.....	6
1.E Tray Rail Drawing.....	7
1.F Condiment Lid Drawing.....	8

Bill of Materials

Table A Bill of Materials—LPD246	9
----------------------------------	---

Illustration 1.A – General Arrangement Drawing

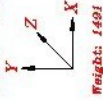
RELEVANT DRAWINGS

DRAWING #	DESCRIPTION
91077	MAIN DRAWING
91077-1	REFRIGERATED BASE
91077-1+	HOT WELLS/DRY STORAGE CABINET
91077-2	FOUNDATION (REFRIGERATED BASE)
91077-3+	FOUNDATION (HOTWELL/DRY STORAGE) TOP
91077-4	SANITARY SNIFFER SHIELD
91077-5	TRAY SLIDE
91076A	TYPICAL FOUNDATION (refrigerated)
91070-1C	TYPICAL FOUNDATION (dry storage)
91070-2D	TOP DETAILS
91070-3B	TYPICAL CABINET COMPONENTS

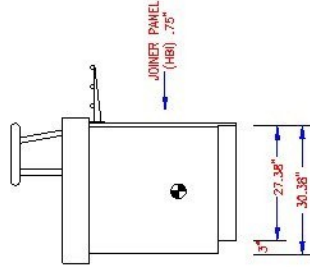
ASSEMBLY ITEMS

DESCRIPTION	QTY.	DESC. P/N	PART #	QTY.
FOUNDATION	1	NA	NA	1
CABINET BODY	1	NA	NA	1
TOP	1	NA	NA	1
HOT WELLS	4	91077-1	NA	4
REFRIGERATED BASE	1	91077-2	NA	1
SHIELDING, ELEC.	4	91077-4	NA	4
ACTUAL CORRUG	4	91077-5	NA	4
ACRYLIC CORRUG	2	91077-5	NA	2
FRAME, SNIFFER	1	91077-5	NA	1
TRAYING TRAY	2	91077-5	NA	2
SNIFER TRAY	2	91077-5	NA	2
BRACKET, TRAY	3	91077-5	NA	3

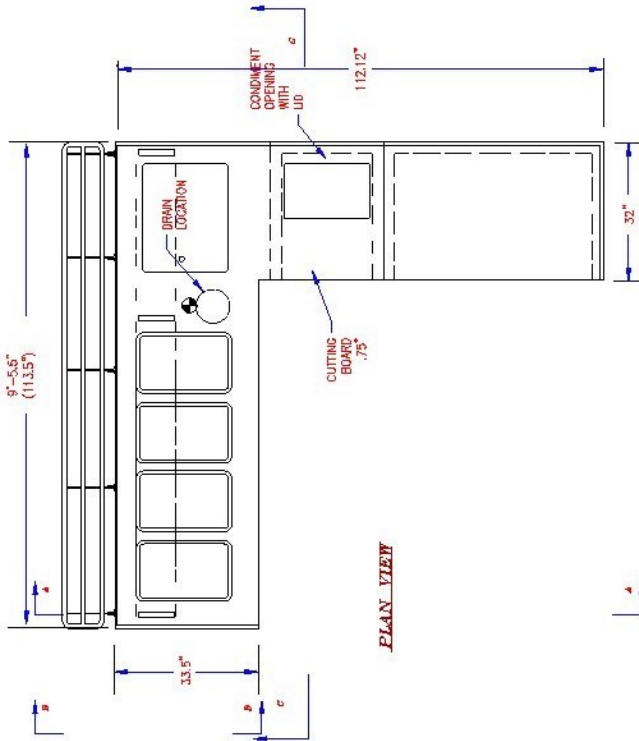
Denotes Center of Gravity
(X,Y,Z) = (66,34,10)



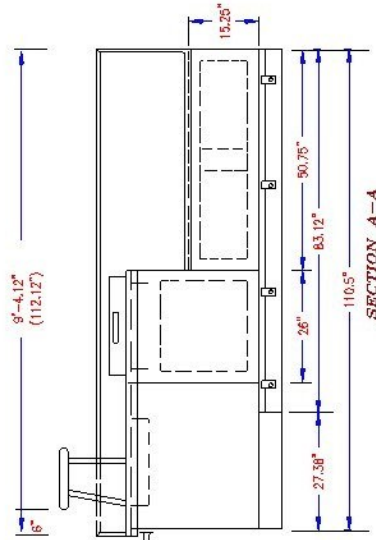
Weight: 1491 lbs



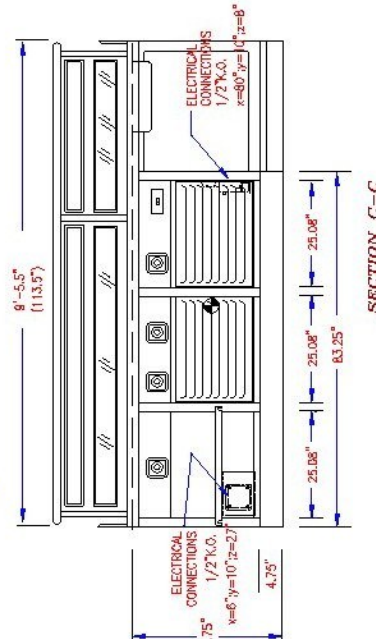
SECTION C-C



PLAN VIEW



SECTION A-A



SECTION C-C

ITEM: 248

SIZE: 8

MODEL: .

NOTES:

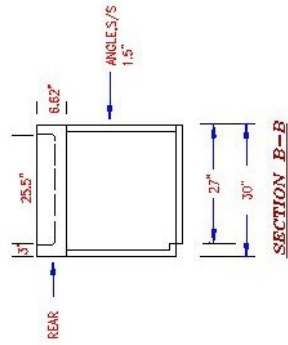
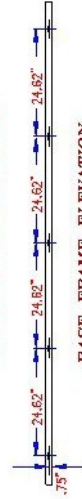
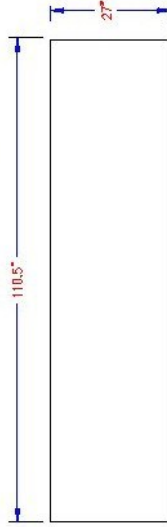
REVISION: 1/8/08 - Added weight, CG, and electrical connection to dimension from 27\"/>

ITEM: CAPETERIA GRILL COUNTER
 PART # 91077C
 DATE: 10/10/02 SCALE: N.T.S.
 DRAWN: W. CW
 CHECKED: N.T.S.
 APPROVED: N.T.S.
 COSPOLICH INC.,
 MORCO, LOUISIANA

Illustration 1.B – Refrigerated Base Drawing

BILL OF MATERIALS

ITEM	DESCRIPTION	PART #	QTY.
GASNET, DWF	JEANS 6449 28.62"X16.62"	NA	2
LATCH	KASON 172BC	NA	2
DRAWER ASSEMBY, COSP.	NA	NA	2
GASNET, DOOR	JEANS 6449 28.62"X23.83"	NA	1
LATCH	KASON 172BC	NA	1
HINGE	KASON 217	NA	2
BRACKET, LID	COMP. EDW. J2B-1532	NA	1
HANDLE, LID	KASON 678	NA	2
HANDLE, DRAWER	KASON 678	NA	2
DRAWER SLIDE	FULTERS F2001-CNS.20	NA	2
EVAPORATOR	BOHN BBN11	RWE127	1
TXV	SPORLAN FF1/4C	RWE127	1
TXV, COLDWELL	SPORLAN FF1/4Z	RWE128	1
SOLENOID VALVE	SPORLAN	NA	1
SWITCH, MELL	JOHNSON CON. 4319	NA	1
THERMOSTAT	F2CF-4050-1A1-201	RUT620	1
COND. UNIT	NA	NA	1
BLOWER	NA	LWMS0	1



ITEM: 246
 SHEET #
 MODEL

NOTES:
 REVISIONS: A: Change to new base frame

PROJECT	REFRIGERATED BASE	DWG #	01077-1A
DATE	07/10/02	SHEET	N.T.S.
		DWG BY	CTW
			MOBILE, LOUISIANA

COSPOLICH INC.

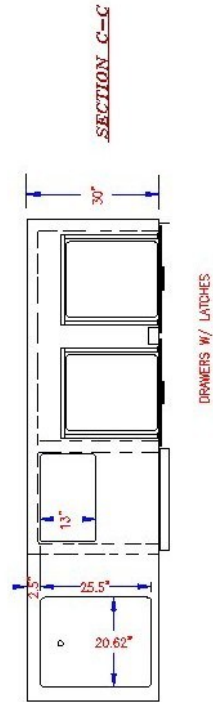
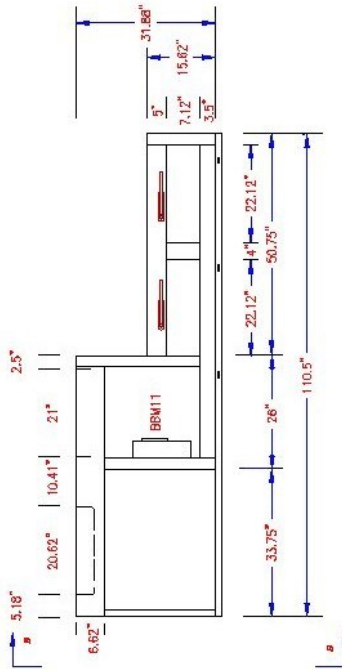
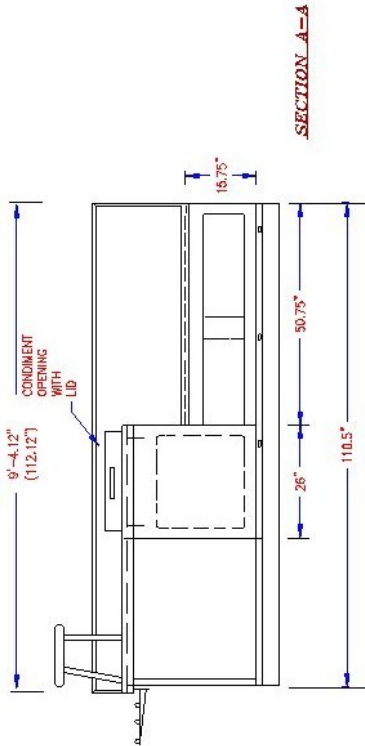
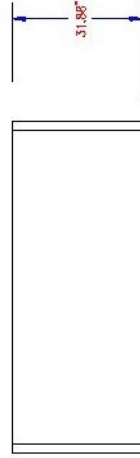
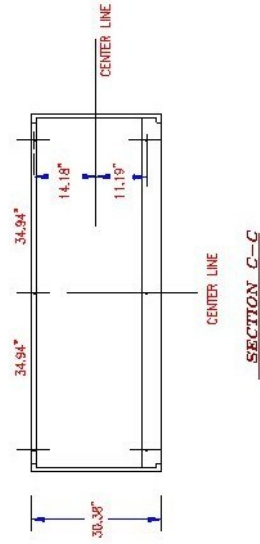
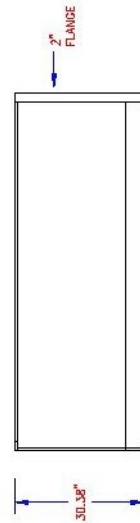
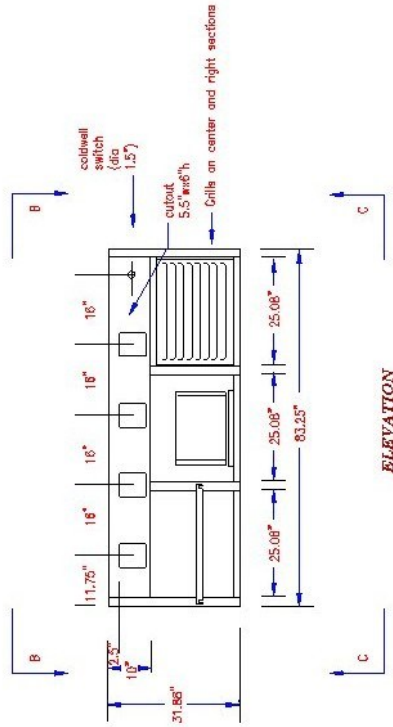


Illustration 1.C – Heated Dresser Drawing



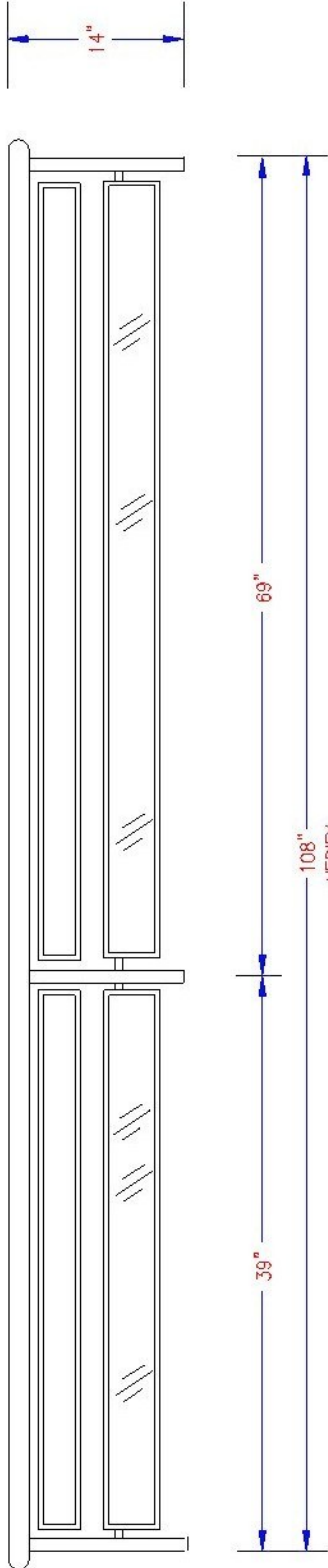
INCLUDE NOTES BY TOP
OF DRAWING
CONS. SECTION B-B DIMS. 21279-89

ITEM: 246
SHEET: 6
MODEL: .

NOTES: Facing Low Temp Material
REFERENCE:

ITEM: HOT SERVING LINE DRESSER	DATE: 5/10/02	SCALE: N.T.S.	DWG # 91077-1A+
PROJECT: FRI/LED-17			DWN. BY: CH
COSPOLICH INC., MONROE, LOUISIANA			

Illustration 1.D – Display Drawing



PLAN VIEW

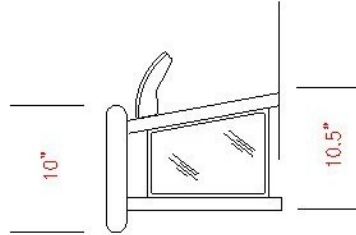
ITEM	MATERIAL
FRAME	1.25" STAINLESS SQUARE TUBING
SHELF	16 GA. STAINLESS STEEL
SNEEZE	.25" ACRYLIC
BRACKETS	STANDARD CURVED
TRIM	.25" STAINLESS CHANNEL CAPPING

ITEM: 246

SHEET: 8

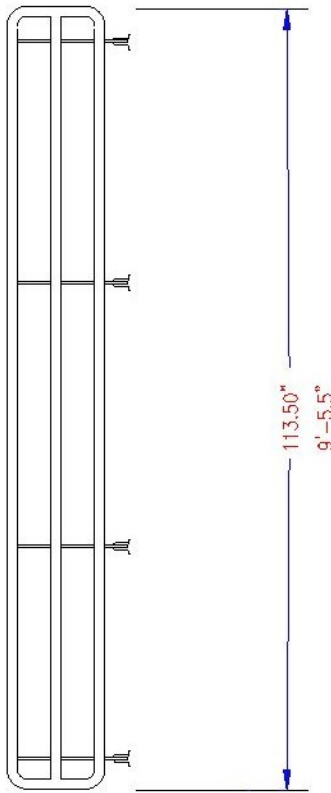
NOTES:
REVISIONS:

ITEM: SANITARY SNEEZE SHIELD	
PROJECT: HBI/LPD-17	DWG #: 91077-4
DATE: 6/20/02	SCALE: N.T.S.
DWN. BY: CW	
COSPOLICH INC.	
NORCO, LOUISIANA	



SECTION A-A

Illustration 1.E – Tray Rail Drawing



PLAN VIEW

ITEM	MATERIAL	LENGTH	PART #	QTY.
FRAME TUBES	1" STAINLESS ROUND TUBING	104.5"	MSSRT065162	3
ENDS			HTSRB01	2
BRACKETS	FIXED		HTSBF01	4

ITEM: 246
SHEET: 8

NOTES:
REVISIONS:

ITEM TRAY SLIDE	
PROJECT HBI/LPD-17	DWG # 91077-5
DATE 10/10/02	SCALE N.T.S. DWN. BY CW
COSPOLICH INC. NORCO, LOUISIANA	

NOTE: Brackets will be field installed.

Illustration 1.F – Condiment Lid Drawing

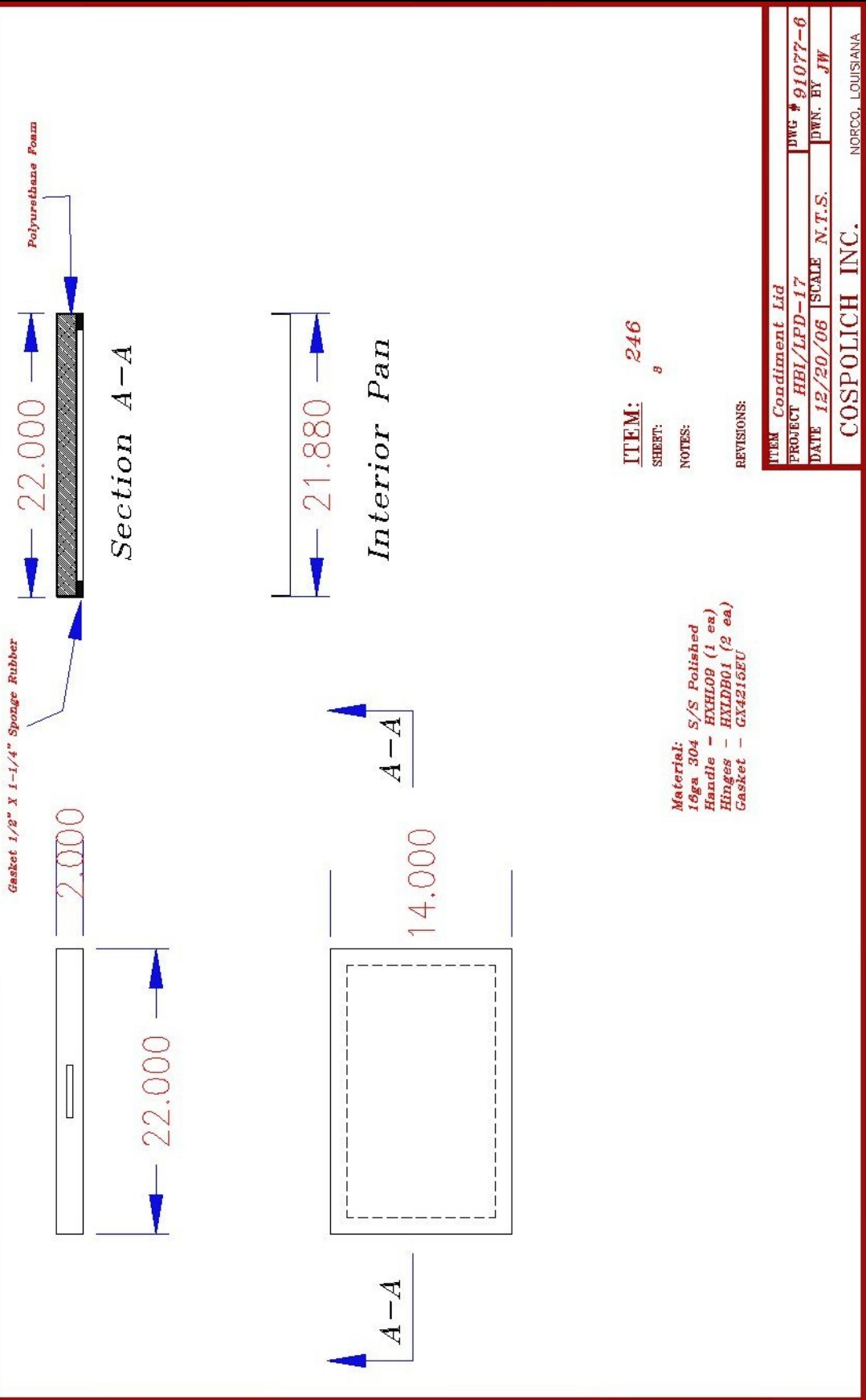


Table A – Parts List for LPD246

	ITEM	COSP#	Vendor	QTY	U/M
1	HOT WELL, 115V	DIHW-N	COSPOLICH	4	EA
2	DOOR ASSEMBLY	D251	COSPOLICH	1	EA
3	DRAWER ASSEMBLY	DLPD246	COSPOLICH	2	EA
4	CONTROL PANEL ASSEMBLY, 115V	RCTL04N	COSPOLICH	1	EA
5	ON/OFF TOGGLE SWITCH	LWTS01	COSPOLICH	1	EA
6	THERMOSTAT	RWTT64	COSPOLICH	1	EA
7	PREPPED CONDENSING UNIT ASSEMBLY, 115V, 404A	RUT520-2-PM	COSPOLICH	1	EA
8	COMPRESSOR	RUT522	COSPOLICH	1	EA
9	CONDENSER	RWCD10	COSPOLICH	1	EA
10	CONDENSER FAN MOTOR	RWCM62	COSPOLICH	1	EA
11	CONDENSER FAN BLADE	RWFB08	COSPOLICH	1	EA
12	RECEIVER TANK	RWRT36	COSPOLICH	1	EA
13	START CAPACITOR	RWCP85	COSPOLICH	1	EA
14	RELAY	RWRLY85	COSPOLICH	1	EA
15	OVERLOAD	RWOVL67	COSPOLICH	1	EA
16	SUCTION SERVICE VALVE	RWSV25	COSPOLICH	1	EA
17	PREPPED EVAPORATOR COIL ASSEMBLY, 115V, 404A	RWE430-P	COSPOLICH	1	EA
18	EVAPORATOR FAN MOTOR, 115V	RWEM03	COSPOLICH	2	EA
19	EVAPORATOR FAN GUARD	RWE5054D	COSPOLICH	2	EA
20	EVAPORATOR FAN BLADE	RWE5101B	COSPOLICH	2	EA
21	STAINLESS STEEL HANDLE	HXHL09	COSPOLICH	1	EA
22	LID BRACKET W/HARDWARE	HXLDB01	COSPOLICH	1	EA
23	HEATER WIRE, 115V, 60", 32 DEGREE	L1HR60	COSPOLICH	2	EA
24	HEATER WIRE, 115V, 72", 32 DEGREE	L1HR72	COSPOLICH	1	EA
25	HEATER WIRE, 115V, 90", 32 DEGREE	L1HR90	COSPOLICH	1	EA
26	ELECTRICAL ENCLOSURE, 8" X 10"	LENC03	COSPOLICH	1	EA
27	BACKING PLATE, 8" X 10"	LENC03B	COSPOLICH	1	EA

Table A – Parts List for LPD246

	ITEM	COSP#	Vendor	QTY	U/M
28	LOW PROFILE BLOWER MOTOR, 115V	LWEM20	COSPOLICH	1	EA
29	BREAKER, 15 AMP, 2-POLE	PCCC55	COSPOLICH	4	EA
30	TERMINAL END STOP	PCTES35	COSPOLICH	2	EA
31	TERMINAL SECTION	PCTWK10/U	COSPOLICH	2	EA
32	EXPANSION VALVE, FS-1/4-C	RWEV27	COSPOLICH	1	EA
33	EXPANSION VALVE, FS-1/4-Z	RWEV28	COSPOLICH	1	EA
34	BALL VALVE, 1/2"	RWIV13	COSPOLICH	4	EA
35	SOLENOID COIL, MKC-1, 115V	RWSC01	COSPOLICH	1	EA
36	SOLENOID VALVE, A3S1, 1/4" ODF	RWSV01	COSPOLICH	1	EA
37	SECONDARY BREAKER STRIP, 96"	HXBP96	COSPOLICH	1.5	EA
38	DOOR GASKET	GLPD251MV-2	COSPOLICH	1	EA
39	DOOR HINGE	HXHE02	COSPOLICH	2	EA
40	DOOR LATCH	HXLH06	COSPOLICH	1	EA
41	DRAWER GASKET	GLPD251MV	COSPOLICH	2	EA
42	DRAWER SLIDES	HXDS02	COSPOLICH	2	PR
43	BREAKER STRIP CORNER	HXBSC01	COSPOLICH	12	EA
44	COLD FOOD COUNTER ON/OFF SWITCH WITH HARNESS	MT-009	COSPOLICH	1	EA
45	CONDIMENT LID ASSEMBLY	LPD246LID	COSPOLICH	1	EA
46	FILTER DRYER	RWFD02	COSPOLICH	1	EA
47	PRESSURE SWITCH	RWPL02	COSPOLICH	1	EA
48	LIGHTED ROCKER SWITCH	LWSR01	COSPOLICH	1	EA
49	SIGHT GLASS	RWSG01	COSPOLICH	1	EA