



## Shipboard Modular Refrigerator

### Technical Manual

Installation, Operation, and Maintenance Instructions

Models:

R10-2M-SN-MLR

R10-2M-S-MLR

R10-2M-SNL-MLR

REV. 001



# Table of Contents

<p>List of Illustrations..... 4</p> <p>List of Tables..... 5</p> <p><b>Chapter 1 General Information..... 6-8</b></p> <p>    1.1 Introduction..... 6</p> <p>    1.2 Scope of the Manual..... 6</p> <p>    1.3 Equipment Description..... 6</p> <p>    1.4 Equipment Supplied..... 6</p> <p>    Table A Leading Particulars..... 7</p> <p>    Illustration 1.A General Arrangement Drawing..... 8</p> <p><b>Chapter 2 Operation..... 9</b></p> <p>    2.1 Introduction..... 9</p> <p>    2.2 Controls and Indicators..... 9</p> <p>    Table B Controls and Indicators..... 9</p> <p>    Illustrations 2.A, 2.B..... 10</p> <p>    2.3 Start Up Procedure..... 11</p> <p>    Table C Start Up Procedure..... 12</p> <p>    2.5 Shut Down Procedure for Short Term..... 13</p> <p>    Table D Shut Down Procedure for Short Term..... 13</p> <p>    2.6 Cleaning Instructions..... 13-14</p> <p>    2.7 Extended Period Inactivity..... 14</p> <p>    Table E Shut Down for Extended Period..... 14</p> <p><b>Chapter 3 Functional Description..... 15</b></p> <p>    3.1 System Description..... 15</p> <p>    3.2 System Operation..... 15</p> <p><b>Chapter 4 Scheduled Maintenance..... 16-19</b></p> <p>    4.1 Introduction..... 16</p> <p>    4.2 Preventive Maintenance Action Index..... 16</p> <p>    4.3 Preparation for Maintenance..... 16</p> <p>    4.4 Maintenance Procedures..... 16</p> <p>        A. Monthly Maintenance Requirements.. 16</p> <p>        B. Bi-Monthly Maintenance Requirements 17-18</p> <p>        C. Annual Maintenance Requirements.. 18</p> <p>        D. 3-Year Maintenance Requirements.. 18</p> <p>    Table F Preventive Maintenance Action Index..... 19</p> <p><b>Chapter 5 Troubleshooting..... 20</b></p> <p>    Table G Mechanical &amp; Electrical..... 20</p> <p><b>Chapter 6 Corrective Maintenance..... 21</b></p> <p>    6.1 Introduction..... 21</p> <p>    6.2 Repair Procedures..... 21</p> <p>        6.2.1 Compressor..... 21-23</p>	<p>        6.2.2 Low Pressure Control..... 23-24</p> <p>        6.2.3 Thermal Expansion Valve (TXV)..... 24</p> <p>        6.2.4 Filter Dryer..... 24</p> <p>        6.2.5 Condenser Fan Motor..... 24</p> <p>        6.2.6 Condenser Fan Blade..... 25</p> <p>        6.2.7 Anti-Condensate Heater Wire..... 25</p> <p>        6.2.8 Door Latch..... 25</p> <p>        6.2.9 Door Hinge..... 26</p> <p>        6.2.10 Door Gasket..... 26</p> <p>        6.2.11 Power Switch..... 26</p> <p>        6.2.12 Drain Line..... 27</p> <p>        6.2.13 Shelf Standards..... 27</p> <p>        6.2.14 Lamp Socket..... 27</p> <p>        6.2.15 Lamp Shield..... 28</p> <p>        6.2.16 Light Switch..... 28</p> <p>        6.2.17 Charging the Refrigeration System 28</p> <p>        6.2.18 Evaporator Motor &amp; Blade..... 29</p> <p><b>Chapter 7 Parts List..... 30-32</b></p> <p>    7.1 Introduction..... 30</p> <p>    7.2 Source Codes..... 30</p> <p>    Table H Source Codes..... 30</p> <p>    Table I Parts List R10-2M-SN-MLR..... 31-32</p> <p>    Illustrations 7.A—7.B Condensing Unit Assembly 33</p> <p>    Illustrations 7.C—7.E Evaporator Coil Assembly 34</p> <p>    Illustration 7.F Lower Compartment Detail 35</p> <p>    Illustrations 7.G—7.H Electronic Controller Assembly..... 36</p> <p>    Illustrations 7.I—7.L Door Detail..... 37</p> <p>    Illustration 7.M Interior Detail..... 38</p> <p>    Illustrations 7.N—7.P Main Unit Front/Rear 39</p> <p><b>Chapter 8 Installation..... 40</b></p> <p>    8.1 Unpacking..... 40</p> <p>    8.2 Installation..... 40</p> <p><b>Chapter 9 Modular Installation..... 41</b></p> <p>    9.1 Introduction..... 41</p> <p>    9.2 Installation Skill Level..... 41</p> <p>    9.3 Tools..... 41</p> <p>    9.4 Primary Components..... 41</p>
--	--

# Table of Contents

9.5 Disassembly.....	41-43
<b>Chapter 10 Electrical &amp; Mechanical.....</b>	<b>44-47</b>
10.1 Introduction.....	44
Illustrations 10.A—10.B.....	45-46
<b>Chapter 11 Warranty.....</b>	<b>47</b>
<b>Appendix 1 Revision History.....</b>	<b>48</b>
<b>Appendix 2 General Arrangement Drawing—Newport News.....</b>	<b>49</b>

# List of Illustrations

Figure	Title	Pg.
1.A	General Arrangement Drawing — R10-2M-SN(L)-MLR	8
2.A	RWTT65-PM(L), Electronic Controller Assembly Detail	10
2.B	RUT050-PM, Condensing Unit Assembly	10
7.A	Condensing Unit Assembly, RUT050-PM, Left Side View	33
7.B	Condensing Unit Assembly, RUT050-PM, Right Side View	33
7.C	Evaporator Coil Assembly, RWE010-PM, Lower Side View	34
7.D	Evaporator Coil Assembly, RWE010-PM, Detail	34
7.E	Evaporator Coil Assembly, RWE010-PM, Interior Detail	34
7.F	Lower Compartment Detail	35
7.G	RWTT65-PM(L), Electronic Controller	36
7.H	RWTT65-PM(L), Electronic Controller, Digital Display Detail	36
7.I	Door Assembly Detail	37
7.J	Door Hinge/Interior Detail	37
7.K	Door Latch Detail	37
7.L	Door Strike Detail	37
7.M	Interior Detail	38
7.N	Main Unit-Front Detail View	39
7.O	Main Unit-Rear Detail View	39
7.P	Shelf Clip & Shelf Detail	39
10.A	Mechanical Piping Diagram	45
10.B	Electrical Schematic (Electronic Controls)	46

# List of Tables

Table	Title	Page
A.	Leading Particulars	7
B.	Controls and Indicators	9
C.	Start Up Procedure	12
D.	Shut Down Procedure for Short Term	13
E.	Shut Down Procedure for Extended Period	14
F.	Preventive Maintenance Action Index	19
G.	Mechanical and Electrical Troubleshooting Guide	20
H.	Source Codes	30
I.	Parts List - R10-2M-SN(L)-MLR	31-32

# Chapter 1 – General Information

## **1.1 Introduction**

This technical manual provides information on the installation, operation, maintenance, and inspection of this unit manufactured by **Cospolich Inc.**, Destrehan, Louisiana. A complete parts breakdown is provided in Chapter 7.

## **1.2 Scope of the Manual**

This technical manual provides information for installation, operating, preventative maintenance, and service instructions, including applicable drawings and figures of the equipment.

## **1.3 Equipment Description**

The unit consists of the following parts:

- A. Storage Compartment - The storage compartment is clear storage area. Included in this area are the adjustable shelves.
- B. Door(s) – Access to the storage compartment is through hinge mounted door(s).
- C. Condensing Unit & Controls Compartment- The condensing unit and controls compartment is located below the storage compartment of the cabinet. Access to this compartment is through an removable grill on the front left of the cabinet.
- D. Evaporator Coil Assembly- The evaporator coil assembly is located in the storage compartment and is responsible for distributing the cold air associated with the refrigeration system.
- E. Cabinet - The cabinet is the enclosure in which all of the above items are housed.

## **1.4 Equipment Supplied**

The unit is shipped from the factory fully assembled, palletized and crated to minimize the possibility of damage in shipping and storage.

## Table A – Leading Particulars

<b>MANUFACTURER:</b>	<b>Cospolich Inc. Destrehan, Louisiana 70047</b>
<b>TYPE:</b>	<b>Marine Shipboard Modular Refrigerator Unit</b>
<b>MODEL:</b>	<div style="border: 1px solid black; padding: 5px; text-align: center;"><b>R10-2M-SN-MLR R10-2M-S-MLR R10-2M-SNL-MLR</b></div> <b>REV. 001</b>
<b>PURPOSE:</b>	<b>Storage of Refrigerated Food Items/Perishables</b>
<b>ELECTRICAL REQUIREMENTS:</b>	<b>Power Supply - 115 Volt AC, 60 Hz, 1 Phase</b>  <b>Amp draw - RLA: 6.7 Amps</b> <b>- Max Fuse: 15 Amps</b>
<b>REFRIGERANT:</b>	<b>404A</b>
<b>CHARGE:</b>	<b>1 lb, 14 oz</b>
<b>DRAIN:</b>	<b>Not Required</b>
<b>DIMENSIONS:</b>	<b>30" WIDE X 23" ACTUAL CABINET DEPTH X 58" HIGH</b>

# Illustration 1.A – General Arrangement Drawing

Information not provided covering any item is to be furnished by the contractor.  
 Approved by \_\_\_\_\_ Date: \_\_\_\_\_

REVISIONS	DATE	BY	DESCRIPTION

**COSPOLICH INC.**  
 NEW ORLEANS, LA.

**NEWPORT NEWS SHIPBUILDING**  
 NEWPORT NEWS, VA.

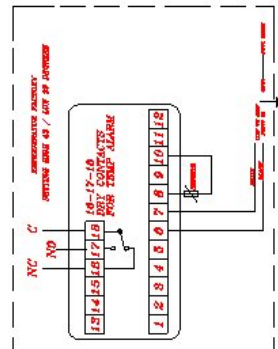
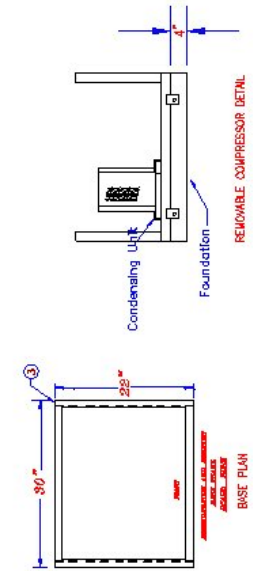
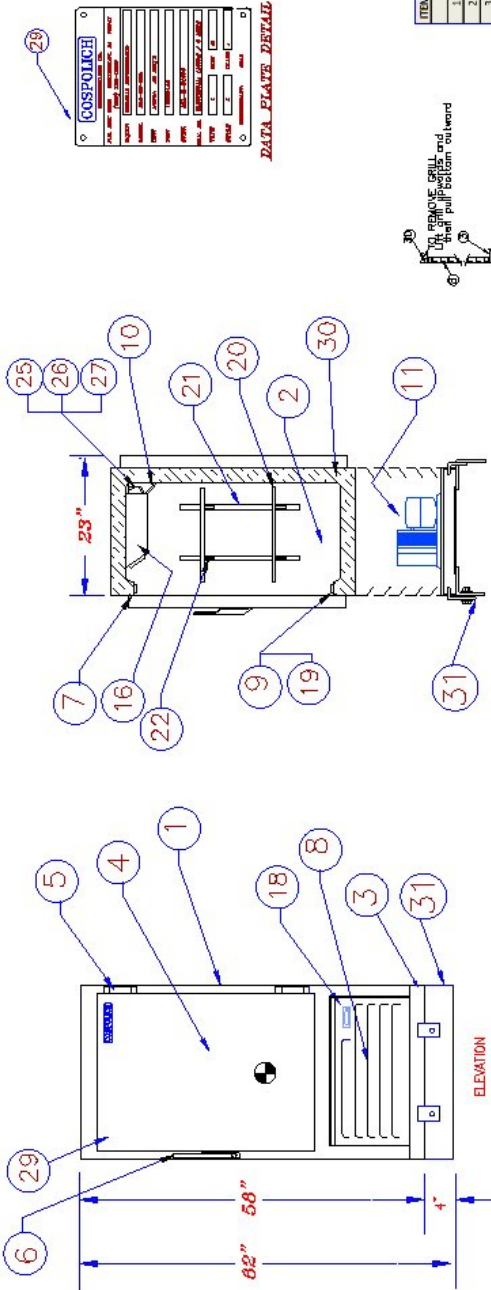
DRAWING NO. **51038**  
 DATE **03/21/12**  
 CT

## SHIPBOARD REFRIGERATOR R10-2M-SNL

- NOTES**
1. DENOTES CENTER OF GRAVITY
  2. WET WEIGHT: 150 lbs. (35.26 kg)
  3. REFRIGERANT: R-404A; CHARGE: 18 lbs. (8.16 kg)
  4. MOTOR: 1/4 HP, 6 AMPS ELECTRICAL
  5. ALL DIMENSIONS TO BE PROVIDED WITH PROVISIONS FOR PADLOCKING.

**DATA PLATE DETAIL**

MANUFACTURER	COSPOLICH
MODEL	R10-2M-SNL
DATE	03/21/12
BY	
CHECKED	
APPROVED	



ITEM #	QTY	ITEM	FIG	FSOM	ODM	SPIC
1	1	CABINET EXT	COSP	66682	20 GA. S/S	ASTMA167
2	1	CABINET INT	COSP	66682	22 GA. S/S	ASTMA167
3	1	BASEFRAME	COSP	66682	S/S	
4	1	Door	COSP	66682	MORBKS	ASTMA167
5	2	HINGE	WASON	30761	21700008	
6	1	LATCH	HASON	30761	1728C	
7	1	GASKET	COSP	66682	GR6AMV	
8	2	GILL	COSP	66682	20 ga. S/S	ASTMA167
9	1	REFRAGER	COSP	66682		
10	1	DRAIN	COSP	66682		
11	1	COND. UNIT	TCUNSE	55431	1804318616	
12	1	COMPRESSOR	TCUNSE	55431	1804318616	
13	1	FAN	TCUNSE	55431	51623	
14	1	MOTOR FAN	TCUNSE	55431	51623	
15	1	RECEIVER	TCUNSE	55431	50289	
16	1	CAPACITOR	TCUNSE	55431	1804318616	
17	1	RELAY	TCUNSE	55431	1804318616	
18	1	OVERLOAD	TCUNSE	55431	1804318616	
19	1	DRYER	SPORIAN	79460	C-1025	
20	1	SWITCH	VARIOUS			
21	1	SWITCH	VARIOUS			
22	1	SWITCH	VARIOUS			
23	1	SWITCH	VARIOUS			
24	1	SOCKET LIGHT	STOKEL	87518	1804318616	
25	1	SOCKET LIGHT	STOKEL	87518	1804318616	
26	1	LAMP BOWL	OTV43	130-100-05		
27	1	LAMP BOWL	OTV43	130-100-05		
28	1	DATA PLATE	COSP	66682	11-001	
29	1	INSULATION	COSP	66682		
30	1	FOUNDATION	COSP	66682		
31	1	FOUNDATION	COSP	66682		



# Chapter 2 – Operation

## **2.1 Introduction**

These models are heavy-duty pieces of food service equipment designed for intermittent use. They incorporate electronic controls to regulate the cycling and temperature of the refrigeration system.

## **2.2 Table B—Controls and Indicators**

<b>Name</b>	<b>Type</b>	<b>Function</b>
Power Switch	Toggle Switch	Power Control, terminates all electrical into and past the supply cord
Electronic Controller	Push Button Electronic, Digital Display	Cycles Refrigeration System (Automatic)
Low Pressure Switch	Contact Points	Cycles the refrigeration system in instances of low refrigerant
Suction Valve	Manual Plunger Valve	Isolate suction at the compressor
Discharge Valve	Manual Plunger Valve	Isolate Discharge line at receiver

**Note:** Normal operating pressures in 90°F ambient environments for refrigerator applications (37°F Cabinet temperature) should be 15-37 psi Suction Pressure and 125-200 psi Head Pressure.

**Note:** Operating pressures are affected by ambient conditions, product load, and the condition of the equipment.

## Illustrations 2.A, 2.B— Control Panel & Condensing Unit Assembly



Illustration 2.A:  
RWTT65-PM(L)  
Electronic Controller  
Assembly

Illustration 2.B:  
RUT050-PM  
Condensing Unit Assembly



### **2.3 Start Up Procedure**

The refrigeration system is completely factory assembled, pre-charged, and ready for operation. To energize the unit, it is only necessary to find the power supply cord and connect it to a proper 115V power source. Once the supply cord has been connected to a power source, the unit can be started by flipping the power control switch to the "ON" position.

**NOTE:** On modular units (MLR suffix in model number) the equipment will require dismantling.

## Table C – Start Up Procedure

	<b>Operation</b>	<b>Results</b>
1.	Activate system by connecting electrical service cord to power supply.	This brings power to the control. The compressor should immediately come on line along with the condenser fan and the evaporator fan(s)
2.	Place power switch to "ON" position	This brings power to the controls.
3.	Locate liquid refrigerant indication glass mounted on the receiver	Once the system has been operating for two minutes, the glass should appear clear and full of liquid refrigerant.
4.	Wait 15 minutes	The temperature in the storage area should begin to drop.
5.	Wait 3 hours	Once the operating temperature has been reached, stocking of the cabinet are can begin.

## 2.5 Shut Down Procedure for Short Term

To shut down, switch the power control to the off position.

**Table D—Shut Down Procedure for Short Term**

	Operation	Results
1.	De-energize the system by flipping the power control switch "OFF".	Once the system is de-energized the cabinet has no power.



**WARNING: PRIOR TO CLEANING ANY OF THE UNIT, THE SYSTEM SHOULD BE DEACTIVATED BY DISCONNECTING THE POWER SUPPLY.**

## 2.6 Cleaning Instructions

1. It is necessary that the power source be turned off.
2. Remove all shelves.
3. Wipe entire unit using a clean cloth or sponge with a mild detergent.



**WARNING: DO NOT SPLASH OR POUR WATER ONTO THE EVAPORATOR ASSEMBLY, CONTROL PANEL, CONDENSING UNIT AND/OR WIRING.**



**CAUTION: POSSIBLE SHOCK HAZARD MAY RESULT AND UNIT MAY BE DAMAGED SHOULD ELECTRICAL COMPONENTS BECOME WET.**

4. A plastic scouring pad may be used in the storage area to remove any hardened food particles.
5. When cleaning is finished, rinse the inside thoroughly with a solution of vinegar and water to neutralize all detergent/cleaner residue.

***Important: It is not recommended to use any strong or caustic cleaners on the refrigerator. Do not allow ammonia to stand in the interior of the unit. Make certain to rinse thoroughly to remove all residue. Failing to do so may cause damage or corrosion to the unit.***

## ***2.7 Preparation for an Extended Period of Inactivity***

This unit is designed for periodic use. For extended shut down the electrical should be disconnected and the interior cleaned.

**Table E— Shut Down Procedure for Extended Period**

	<b>Operation</b>	<b>Results</b>
1.	Fully close discharge valve at the receiver	Compressor will pump liquid refrigerant from system to receiver.
2.	Fully close suction valve at the compressor	This will isolate the refrigerant between the two valves.
3.	De-energize the system by flipping the power control switch to the "OFF" position and disconnecting the electrical supply cord.	De-energizes system. The condenser fan and evaporator fan(s) will cease operation.
4.	Clean and wipe dry the food storage compartment	This will reduce the odor buildup during shut down period.

# Chapter 3 – Functional Description

## **3.1 System Description**

The unit is a self-contained, automatically controlled, continuous duty perishable food storage system. It is designed with the intent and purpose of storing perishable food items.

The operating temperature is automatically monitored by the electronic controls that are factory set to maintain a predetermined adequate storage condition.

The equipment is comprised of the following two basic compartment assemblies:

1. Condensing Unit Compartment—This area contains the condensing unit along with the electronic control assembly or standard control panel.
2. Storage Compartment—The insulated food storage area is a temperature controlled refrigerated area. Included in this compartment is the adjustable shelving and evaporator coil assembly.

## **3.2 System Operation**

The design of the refrigerator cabinet focuses primarily on the safe storage of food products requiring refrigeration. In engineering, considerable attention was placed on not only its functionality, but also serviceability.

The refrigeration system is a closed loop system. Barring a leak in the system, the addition of refrigerant will not be necessary. A periodic check of the refrigerant level, however, is recommended to insure that the system operates at the optimum level at which it was designed.

The chilled food compartment is designed for the storage of perishable food items that require a temperature range of 37 to 40°F on refrigerators and –5 to 0°F on freezers. It is a general rule that adequate spacing is allowed between the stored items to allow for proper air circulation.

# Chapter 4—Scheduled Maintenance

## **4.1 Introduction**

To insure the longest and most trouble free operation, a thorough periodic maintenance schedule is required. The maintenance system should be aimed at maximizing the efficient utilization of maintenance personnel, minimizing down time, and providing the orderly acquisition of spare parts support.

The Cospolich refrigerator cabinet will generally be in operation in a facility or onboard a vessel where scheduled maintenance is performed according to Maintenance Index Plans. This unit requires regular maintenance. This chapter is intended as an alternative to any standard maintenance program that may pre-exist. The preventative maintenance schedule is based upon similar maintenance requirements for commercial refrigeration equipment.

## **4.2 Preventive Maintenance Action Index**

If there is not a maintenance index plan, we have formulated our schedule for periodic maintenance in Table G.

## **4.3 Preparation for Maintenance**

Since many areas affected in the maintenance schedule are electrically supplies, it may be necessary to de-energize the system when making these inspections.

## **4.4 Maintenance**

### **A. Monthly Maintenance**

1. The unit should first be de-energized by switching the toggle switch to the "OFF" position. The switch is found on the electronic control panel assembly in the condensing unit compartment. Note: It is necessary to first remove the louvered grill to the condensing unit compartment. This is done by lifting it straight up, then pulling the bottom out and down.
2. Using a vacuum or soft brush/broom, brush the condenser fins in a vertical motion to remove dust or debris.



## B. Bi-Monthly Maintenance

1. Check the drain line at both the inlet and outlet ends to make certain that there are no obstructions (forced air evaporator models only). It is not recommended to use any chemicals in clearing a clogged drain. The preferred method is to use compressed air, with approximately 60 psi being sufficient to free most clogs or obstructions. To do so, simply remove the drain line at the evaporator coil and attach an air line to it.
2. With the unit in a cooling cycle, use a flashlight and locate the refrigerant sight glass. If the compressor has been running for 3 or more minutes, there should be no visible bubbles.
  - A. If bubbles are present:
    - Determine if there is a leak by using an electronic leak detector.
    - Repair any/all leak(s).

**Warning:** *The system should be de-energized when checking for leaks.*

### B. To repair leaks:

1. Flared Fitting: Can often be repaired by simply tightening the brass flare nut 1/4 of a turn. If tightening does not repair the leak, it may be necessary to re-flare the tubing.
2. Brazed Joint: It is necessary to pump down the system's refrigerant charge to remedy the problem. To pump the refrigerant into the receiver, you must first connect service gauges to the system at the suction valve on the compressor and the liquid valve on the receiver. Purge the gauges before opening the systems valves to avoid contamination. Run the receiver (liquid or high pressure) valve all the way in to stop the refrigerant from exiting the receiver. The system must be pumped down to a vacuum prior to opening. Once pumped down, the necessary repairs can be made.

3. Using a mild non-abrasive detergent and soft cloth, wipe the interior lining beginning with the top and working down. Also, wipe the gasket and where it sits on the cabinet interior.
4. Remove the louvered air grill and unbolt the condensing unit, then slide it out. The unit is capable of being completely removed due to the extra tubing coiled up behind/beside the unit. With the unit de-energized, check the condenser fan motor and make certain that it is secure and not loose. Inspect the fan blade for cracks and make sure it is tight on the motor.
5. To inspect the evaporator motor, de-energize the unit. Remove the drain line from the evaporator pan. Loosen the screws that hold the shroud. Lower the shroud and disconnect the polarized electrical connection. With the shroud out of the cabinet, proceed to inspect the motor mounting bolts and the fan for cracks or excessive play. **NOTE:** *In vertical style evaporators, lift/remove the side cover to examine the evaporator fans, which should be clearly visible and accessible.*
6. Using a mild detergent and water, wipe the vinyl gasket. Make certain to clean under the gasket to remove any mildew or residue that may have accumulated.
7. Using a mild, non-abrasive detergent and water, wipe the cabinet exterior, paying careful attention to wipe the cabinet in the direction of the stainless steel grain texture.

### C. Annual Maintenance

1. Slide the condensing unit out and check all refrigerant lines for leaks or fatigue, making sure no copper lines are in direct contact with any other metal surfaces. If contact exists, place an insulated material between the two surfaces.
2. Inspect electrical connections to make certain that there is a good contact and that wires are neither weakened or frayed.
3. Inspect the integrity of the cabinet.
4. Check all bolts and screws to make sure they are tight and secure.

### D. 3-Year Frequency Maintenance

1. Replace all door gaskets. To do so, first remove all products from the refrigerated compartment. Using a Phillips screwdriver, remove the door from the cabinet and lay it on a flat surface, gasket facing up. Lift the flange off the gasket and remove all screws securing it to the door. Remove the original gasket and replace with a new one. Reinstall all screws and mount door back onto cabinet.
2. Inspect all motors and shafts for noise & wear, replace if necessary.
3. With the unit de-energized, remove the condensing unit from its compartment and inspect all wiring for signs of fatigue or wear.
4. Inspect the operation of the door latch assembly (when applicable). Check for signs of wear, loose screws, or mechanical failure.
5. Inspect the operation of the door hinges. To do so, open the door at a 90° angle to the cabinet and lift on the outer edge of the door. If there is upward movement of ½" or more, replace the hinges. On spring-mount hinges, when the doors no longer close properly, replace the hinges.

**Table F – Preventive Maintenance Action Index**

	<b>Frequency</b>	<b>Description</b>
1.	Monthly	A. Inspect condenser coil to make certain air flow is not obstructed and that it is clear of dust and debris.
2.	Bi-Monthly	A. Inspect and clear drain line. B. Check the liquid refrigerant sight glass for proper refrigerant charge C. Clean interior and exterior of cabinet with mild detergent and water, dry thoroughly D. Check both condenser fan motor and evaporator motor(s) for proper function and that they are mounted securely E. Clean door gaskets and breaker strips with a damp cloth
3.	Annually	A. Slide out condensing unit, check all joints and fittings for signs of wear, leaks, or fatigue B. Inspect electrical connections to make certain that there is a good contact and that wires are neither weakened or frayed. C. Check the integrity of the cabinet
4.	3-Year	A. Replace all door gaskets B. Inspect motor shafts for noise or wear C. Inspect electrical controls and wiring D. Inspect door latch (when applicable) and hinges. E. Recalibrate Thermometer

# Chapter 5 – Troubleshooting

This chapter will assist in a systematic check of components in determining any cause of equipment failure.

It will be necessary that the individual involved in the troubleshooting operation be familiar with the function of the equipment as described in Chapter 3.

The following table lists the most common symptoms that may be experienced and the recommended corrective action. The tables are separated into electrical maintenance, mechanical maintenance, and operators' actions.

**Table G – Mechanical and Electrical Troubleshooting Guide**

<b>Symptom</b>	<b>Possible Failure</b>	<b>Remedy</b>
Unit does not operate	A. Control failure B. Incorrect voltage C. Failed compressor D. Blown fuse E. Bad connection at supply cord	A. Adjust control or replace B. Correct C. Replace D. Replace fuse E. Check supply cord at outlet
Unit runs continuously	A. Control failure B. Bad connection at TXV expansion valve C. Restricted air flow D. Bad condenser fan motor E. TXV valve stuck open F. Ineffective door seal G. Restricted air flow in storage compartment H. Low Refrigerant	A. Adjust control or replace B. Check and secure sensor bulb to suction line C. Clear obstruction and clean condenser D. Check and replace E. Replace F. Adjust door latch and hinges G. Redistribute food for even air flow H. Check for leaks, repair, recharge system
Low Head Pressure	A. Defective compressor B. Low refrigerant C. Ambient temp too low	A. Replace B. Leak check & recharge C. Raise room temperature
High Head Pressure	A. Dirty condenser B. System contains air C. Refrigerant overcharge D. Condenser fan bad	A. Clean condenser B. Evacuate, change filter dryer, recharge C. Reduce qty of refrigerant D. Replace
Short Cycling	A. Maladjusted control	A. Adjust control

# Chapter 6 – Corrective Maintenance

## **6.1 Introduction**

This chapter focuses on the instruction needed in the removal and replacement of certain components. We will also address the repair of components not listed under the schedule maintenance index covered in Chapter 4.

The components that we address are considered acceptable for repair using standard procedures that we will detail. The level of skills required to perform the service or repair will vary. Some may require specific training. It is up to the individual and /or his supervisor to determine their capability to undertake the particular task of service or repair. It is also important to know that any procedure requiring the handling of electrical components and appliances. The service or repair items are limited to those listed in Chapter 7.

## **6.2 Repair Procedure**

### **\*\*WARNING\*\***

**PRIOR TO PERFORMING ANY WORK ON THE SYSTEM, IT IS REQUIRED THAT THE UNIT BE DE-ENERGIZED. FEDERAL LAWS REQUIRE THE PROPER HANDLING AND DISPOSAL OF REFRIGERANTS. IT IS UNLAWFUL TO RELEASE ANY REFRIGERANT INTO THE ATMOSPHERE.**

***Note:** To access the electrical components the louvered grill on the front of the cabinet must be removed. To remove it, simply lift up and pull the bottom of the grill outward.*

### **6.2.1 Replacement of Compressor (Part #: RUT051)**

1. Evacuate the refrigerant from the system using a recovery system in compliance with all Federal regulations.
2. Disconnect power supply to the unit.
3. Remove the exterior louvered grill to access the condensing unit compartment.
4. With the grill(s) removed, use a 3/8" wrench/socket to remove the mounting bolts that secure the condensing unit to the cabinet base. Slide entire unit out, paying attention to lift it over the angle mounting clips at the base.
5. Find electrical terminal box on side of compressor and remove cover. Discon<sub>21</sub>

nect the wires from the compressor. Remove the screws that attach terminal box to the compressor. The compressor is now electrically detached.

6. Using wrenches, remove the suction and discharge valve stem cover caps on each side of the compressor. Also remove the cap nut on the suction and discharge side as well.
7. Disconnect high-side line at the compressor. This is done by heating the brazed connection using an acetylene and oxygen torch set. **Warning:** *Do not apply a flame to lines containing refrigerant as phosgene gas may be created which can be hazardous or fatal if inhaled.*
8. To remove the low pressure control capillary tube and service fitting, loosen the ¼" brass flare nut on the suction valve.
9. Disconnect the compressor from its mounting. Remove the wire clips on each of the four feet. Remove old compressor.
10. To install the new compressor, place it in position on the base and reinstall four wire clips.
11. Reattach the suction and discharge valve blocks to the appropriate sides of the compressor.
12. Reattach the low pressure control capillary tube and service fittings to the suction side of the compressor.
13. Reattach the suction line to the compressor.
14. Prepare the high pressure line's end by cleaning off residue using a fine sandpaper or emery cloth. Also clean the connection on the compressor. Apply flux to both ends and braze the connections into place.
15. Remove valve stem cap from suction block on side of the compressor. Run valve stem out all the way then in one turn clockwise.
16. Place refrigeration service gauge hoses on both suction and high side valves. Attach a bottle of refrigerant to the charging hose and charge the system with 10 psi of 404a, then using N<sup>2</sup>, bring pressure up to 150 psi. Use an electronic leak detector to check system for leaks. Repair all leaks, if necessary.

17. If no leaks are present, recover the test charge using a vacuum recovery pump.
18. With the system pressure at 0 psi, connect the vacuum pump and evacuate the system. Run pump for 1 hour. Pump should pull system down to 29.72" Hg (NSTM 516 requires evac of 5000 microns, 29.72" Hg).
19. Reattach electrical terminal box and secure all wiring.
20. Check refrigeration tag on the unit for the number of ounces of refrigerant to place into the system for start up. Monitor the pressure on both the suction and discharge sides of the manifold gauges. As the temperature in the storage area begins to fall, check the refrigerant flow through the sight glass. The unit is fully charged when there are no bubbles in the sight glass. If after five minutes of operation, bubbles are still present, it may be necessary to add more refrigerant, which should be done in small amounts to keep from overcharging.

***Warning:*** *Overcharging a refrigeration system can be dangerous. If assistance is required, call Cospolich (800) 423-7761 to speak to a service technician.*

### ***6.2.2 Replacement of Low Pressure Control (Part #: RWPL02)***

1. Disconnect the unit from electrical service.
2. Remove control cover and disconnect electrical terminals.
3. Disconnect capillary tube.
4. Remove mounting fasteners on control base and install new control.
5. To adjust the new control, hook up service gauges to the suction and discharge valves and crack them to allow the gauges to detect a reading.
6. Using a standard screwdriver, coarse adjust the control by turning the adjustment screws on the top of the control. Preset the cut-in and cut-out at 0 psi and 10 psi respectively for a refrigerator (and 0 psi and 10 psi respectively for a freezer, when applicable).

***NOTE:*** *If your unit does not contain a thermostat, please contact Cospolich Customer Service at (800) 423-7761 for your cabinet's appropriate settings.*

7. Start the system and allow it to run for five minutes. Monitor the low side pressure. Fine adjustments may be necessary to achieve the proper cycling pressures.

### **6.2.3 Replacing Expansion Valve (TXV)—(Part #s: RWEV27)**

1. Close liquid valve and run compressor until it pumps refrigerant into the receiver (low side service gauge will read 1 psi). Close the suction line valve. It may be necessary to jump out the pressure switch in order to achieve the 1 psi reading.
2. Disconnect the sensor bulb connections at the suction line.
3. Disconnect the liquid line (1/4") and suction line (3/8") then remove the TXV.
4. Install new TXV, reconnect lines, and re-install the sensor bulb.
5. Purge system and add refrigerant, if needed.

**Note:** *It is not recommended to adjust the valve as it comes preset from the factory.*

### **6.2.4 Replacing Filter Dryer— (Part #: RWFD02)**

1. Close liquid line valve and run compressor until the low side refrigeration gauge indicates 1 psi, then close suction. It may be necessary to jump out the pressure switch in order to achieve the 1 psi reading.
2. Remove the filter dryer from the system and replace with new dryer.
3. Purge system and add refrigerant, if needed.

### **6.2.5 Replacing Condenser Fan Motor— (Part #: RWCM05)**

1. Disconnect all electrical power to the unit.
2. Remove the condensing unit from its compartment.
3. Remove the protective wire shroud from around the motor and disconnect the fan motor leads from the terminal box on the compressor.
4. Remove the mounting screws at the motor base, then remove the fan blade.



### ***6.2.6 Replacing Condenser Fan Blade—(Part #: RWFB38)***

1. Disconnect all electrical power to unit.
2. Remove the condensing unit from the its compartment.
3. Locate and remove the five mounting screws attaching the blower trim and frame.
4. Remove protective wire shroud from around the motor.
5. Using an Allen wrench, loosen the set screw on the blade hub and slide the blade from the shaft.
6. Replace the blade. Reverse the process to reassemble.

### ***6.2.7 Replacing the Anti-Condensate Heater(s)—(Part #s: L1HR128)***

**NOTE: The anti-condensate heater wire is located behind the front edge of the vinyl breakers in the door opening.**

1. Disconnect all electrical power to the cabinet.
2. Remove vinyl breaker strips by exerting pressure at the front edge toward the door.
3. Disconnect anti-condensate heater wiring connection.
4. Remove heater from recessed rail.
5. Replace new heater wire in rail and reconnect electrical.

### ***6.2.8 Replacing Door Handle/Latch—(Part #: HXLH06, HXLH06-S)***

1. Remove three side mounting screws in the latch.
2. Remove two screws in the strike.
3. Replace both latch/handle and strike.
4. Replace in reverse order.

### ***6.2.9 Replacing Door Hinge(s)—(Part #: HXHE02)***

**NOTE: This procedure is best accomplished with two people—one to hold the door while the other removes and the attachment screws.**

1. Using a screwdriver, remove the three screws that attach the butt section of the hinges to the cabinet.
2. With the door detached from the cabinet, remove the screws that attach the hinges to the door.
3. To install replacement hinges, reverse the process.
4. On spring-loaded hinges (when applicable), careful attention must be paid to the spring cartridge during the replacement process. Call Cospolich (800) 423-7761 for assistance.

### ***6.2.10 Replacing Door Gasket—(Part #s: GB60MV)***

**NOTE: It is suggested that the door be removed from the cabinet and placed gasket side up on a table during the replacement process. Pay careful attention not to cut the new gasket when installing.**

1. Pull back gasket and remove all fasteners located below the gasket lip.
2. Clean the area under the gasket.
3. Place new gasket on door, replace all fasteners.
4. Reinstall door onto cabinet.

### ***6.2.11 Replacing the Power Switch (Part #: LWTS01)***

1. Shut off all electrical power to the unit.
2. Remove the front louvered grill.
3. Using a flat-head screwdriver, remove the cover plate with the toggle switch attached.
4. Remove the wires connecting the switch. Replace the switch. Reverse the steps to install the new switch.

### ***6.2.12 Replacement of the Drain Line (Part #: CVT12)***

1. On the cabinet exterior, remove the rear tubing cover using a 1/4" nut driver.
2. On the interior of the cabinet, remove the stainless steel drain line cover.
3. From the inside of the cabinet, pull the drain line off the evaporator shroud.
4. From the exterior rear, pull the drain through the penetration in the back wall of the cabinet.
5. At the bottom of the condensing unit compartment, cut the drain line restraining strap. The drain line should now be free and can be replaced.
6. To install a new drain line, reverse the process.

### ***6.2.13 Replacement of Shelf Standards (Part #: HXSD36)***

1. To replace the shelf standard(s), all products must be removed from the shelves, then remove all shelves.
2. With the shelves removed, slide the standard up vertically 1/2" to allow it to slide out of the retainer stud.
3. Reverse the process to install the new standards.

### ***6.2.14 Replacement of the Lamp Socket (Part #: LRLF01)***

1. Shut off all power going to the unit.
2. Remove the lamp shield by turning it counter-clockwise.
3. Unscrew and remove the light bulb.
4. Remove the two screws in the base of the fixture using a 1/4" nut driver.
5. Pull the fixture out of the cabinet wall, revealing the electrical connections.
6. Remove the fixture by disconnecting the electrical via the two quick connect fittings.
7. Reverse the process to install the new lamp socket.

### ***6.2.15 Replacement of Lamp Shield/Cover (Part #: LRLC02)***

1. Unscrew and remove the shield/cover by turning counter-clockwise.
2. Replace by turning clockwise.

### ***6.2.16 Replacement of Light Switch (Part #: LRLS01W)***

1. Shut off all power going to the unit.
2. Using a flat-head screwdriver, pop the light switch out from the front of the cabinet.
3. Pull the switch away from the cabinet about 2", enough to expose the wires connecting it to the unit.
4. Remove the connections from the switch.
5. Fasten the connectors to the new switch.
6. Place the new switch in the hole and apply pressure to the flange of the switch until it snaps into place.
7. Test the new switch to verify it is functional.

### ***6.2.17 Charging the Refrigeration System***

1. Charging of the refrigeration system should only be done by a trained refrigeration technician only. Contact Cospolich Technical Support, (800) 423-7761, for assistance.

### ***6.2.18 Replacing the Evaporator Motor & Blade (Part Numbers: RWEM03, RWE5101B)***

1. Shut off all power going to the unit.
2. Using a 5/16" nut driver, remove the four screws holding the evaporator cover in place. Remove the evaporator cover.
3. To replace the evaporator fan motor, disconnect the electrical connections from the motor along with the fasteners holding it in place.
4. Reverse to install new fan motor.
5. To replace the evaporator fan blade, remove the old blade from the motor shaft by gently pulling it off.
6. Reverse to install the new fan blade.

**Cospolich Inc.** urges that all individuals responsible for training, teaching or advising, installation mechanics and service personnel emphasize proper techniques and strict adherence to recommended practices for electrical maintenance.

# Chapter 7—Parts List

## **7.1 Introduction**

This section of the manual contains lists of replaceable parts. Each of the tables contain a list of removable parts associated with an assembly of the cabinet . No parts identification has been provided for details of permanently assembled items or those items that are not suitable for field repair.

## **7.2 Source Codes**

The sources for some items are shown in the part tabulation. Where no individual source code is listed, the part is available through Cospolich Inc. , PO Box 1206, Destrehan, LA 70047 (Fed. Mfg. Code #66682).

## Table H—Source Codes

Code Number	Name	Address
14852	Bohn Heat Transfer	Danville, IL 61834
32761	Kason Industries	Newnan, GA 30265
50992	Ranco Controls	Plain City, OH 43064
78462	Sporlan Valve	Washington, MO 63090
14569	Copeland Corporation	Sidney, OH 45365
17529	Oasis	Vacaville, CA 95687
59431	Tecumseh Products	Ann Arbor, MI 48108
49048	Miljoco Corporation	Mt. Clemens, MI 48043
42020	Nashville Wire Products	White Bluff, TN 37187
79264	Jean's Extrusions, Inc.	Salem, IN 47167
2K223	Refrigeration Hardware	Grand Junction, CO 81505
09966	Instrument Systems Corp.	Jericho, NY 11753
60886	Idec Corporation	Sunnyvale, CA 94089
19220	Eberhard, Inc.	Strongsville, OH 44149
66682	Cospolich, Inc.	Destrehan, LA 70047

**Table I—Parts List for R10-2M-S(N)-MLR**

	<b>ITEM</b>	<b>COSP#</b>	<b>MFG#</b>	<b>Vendor</b>	<b>QTY</b>	<b>U/M</b>
1	PREPPED EVAPORATOR COIL ASSEMBLY, 404A, 115V	RWE010-PM	RWE010-PM	COSPOLICH	1	EA
2	EVAPORATOR COIL ONLY	RWE010	TA10SG	HEATCRAFT	1	EA
3	EXPANSION VALVE	RWEV27	FS-1/4-C	SPORLAN	1	EA
4	EVAPORATOR FAN COVER	RWE5054D	5054D	HEATCRAFT	1	EA
5	EVAPORATOR FAN BLADE	RWE5101B	5101B	HEATCRAFT	1	EA
6	EVAPORATOR FAN MOTOR, 115V	RWEM03	25300701	HEATCRAFT	1	EA
7	PREPPED CONDENSING UNIT ASSEMBLY, 404A, 115V	RUT050-PM	RUT050-PM	COSPOLICH	1	EA
8	CONDENSING UNIT ONLY	RUT050	AEA9422ZXAXC	TECUMSEH	1	EA
9	FILTER DRYER	RWFD02	C-O52-S	SPORLAN	1	EA
10	PRESSURE SWITCH	RWPL02	010-1483-070	JOHNSON CONTROLS	1	EA
11	SIGHT GLASS	RWSG09	SA-K142	SPORLAN	1	EA
12	COMPRESSOR	RUT051	AE590AT-900-P2	TECUMSEH	1	EA
13	CONDENSER	RWCD13	50823	TECUMSEH	1	EA
14	CONDENSER FAN BLADE	RWFB38	51561-1	TECUMSEH	1	EA
15	CONDENSER FAN MOTOR, 115V	RWCM05	810M006B45	TECUMSEH	1	EA
16	RECEIVER	RWRT04	51080	TECUMSEH	1	EA
17	START CAPACITOR	RWCP49	85PS165C27	TECUMSEH	1	EA
18	CONDENSING UNIT RELAY	RWRLY09	820RR12B79	TECUMSEH	1	EA
19	OVERLOAD	RWOVL05	8300MTRE59	TECUMSEH	1	EA
20	LIGHT SWITCH	LRLS01W	LRLS01W	COSPOLICH	1	EA
21	LATCH STRIKE	HXLH06-S	172-2	KASON	1	EA
22	SHELF STANDARD	HXSD36	0065007036	KASON	4	EA
23	ELECTRONIC CONTROLLER ASSEMBLY	RWTT65-PM(L)	RWTT65-PM(L)	COSPOLICH	1	EA
24	ON/OFF TOGGLE SWITCH	LWTS01	2FA53-73-TABS	ALLIED	1	EA
25	CONDENSER SENSOR, 59"	RWTS13*	077F8760	DANFOSS	1	EA
26	CABINET SENSOR, 118"	RWTS14	077F8769	DANFOSS	1	EA
27	DEFROST SENSOR, 118"	RWTS15*	077F8798	DANFOSS	1	EA
28	DOOR ASSEMBLY	MDB60S	MDB60S	COSPOLICH	1	EA

**Table I—Parts List for R10-2M-S(N)-MLR**

	<b>ITEM</b>	<b>COSP#</b>	<b>MFG#</b>	<b>Vendor</b>	<b>QTY</b>	<b>U/M</b>
29	DOOR GASKET	GB60MV	02-070	RHS	1	EA
30	DOOR HINGE	HXHE02	0217000008	KASON	2	EA
31	DOOR LATCH	HXLH06	172BC	KASON	1	EA
32	SECONDARY BREAKER STRIP-27"	HXBS27	20-0100	JEANS EXTRUSIONS	2	EA
33	SECONDARY BREAKER STRIP-48"	HXBS48	20-6910	JEANS EXTRUSIONS	2	EA
34	BREAKER STRIP CORNER	HXBSC01	19-0000	JEANS EXTRUSIONS	4	EA
35	HEATER WIRE, 115V, 128"	L1HR128	64-200	RHS	1	EA
36	LIGHT FIXTURE	LRLF01	L20-1010-GS	COMPONENT HDW	1	EA
37	LIGHT BULB, 40W, 115V	LRSB01	685206	BARNETT	1	EA
38	CONTROLLER RELAY, 30 AMP, 120V	PCCR64*	886-0144	ALLIED	1	EA
39	SHELF CLIPS	HXCS01	0066000004	KASON	8	EA
40	STAINLESS STEEL SHELF	SSW24BX16B	SSW24BX16B	NASHVILLE WIRE	2	EA
41	ADJUSTABLE LEG	HLEG63*	1-1752F260T50S	KASON	4	EA
42	COPPER TUBING WHEEL	RWCTW04M	RWCTW04M	COSPOLICH	1	EA
43	ELECTRONIC CONTROLLER DIGITAL DISPLAY	RWTT65	ERC102C	DANFOSS	1	EA
44	QUICK CONNECT FITTING-1/4"	RWQF0048	5500-04-08	PARKER	2	EA
45	QUICK CONNECT FITTING-3/8"	RWQF0068	5500-06-08	PARKER	2	EA
46	EPOXY SHELF	SEW24BX16B**	SEW24BX16B	NASHVILLE WIRE	2	EA
47	LIGHT SWITCH ACTIVATOR	EX96S	EX96S	WRICO	1	EA
48	FRONT GRILL WITH CUTOUT FOR ELECTRONIC CONTROLLER	GR04-EC (REV. 001)	GR04-EC (REV. 001)	COSPOLICH	1	EA
49	CONDENSATE EVAPORATOR, 115V	RWCE01	T12-0370	COMPONENT HDW	1	EA
50	HIGH-LOW-HIGH TEMPERATURE ALARM	HLTA01RF-EC***	HLTA01RF-EC	COSPOLICH	1	EA

**\*Not shown in illustrations**

**\*\*Used on R10-2M-S-MLR models**

**\*\*\*For R10-2M-SNL-MLR models, see separate manual for the HLTA01RF-EC High-Low-High Temperature alarm**



**Illustrations 7.A, 7.B—RUT050-PM, Condensing Unit Assembly( 7 )**

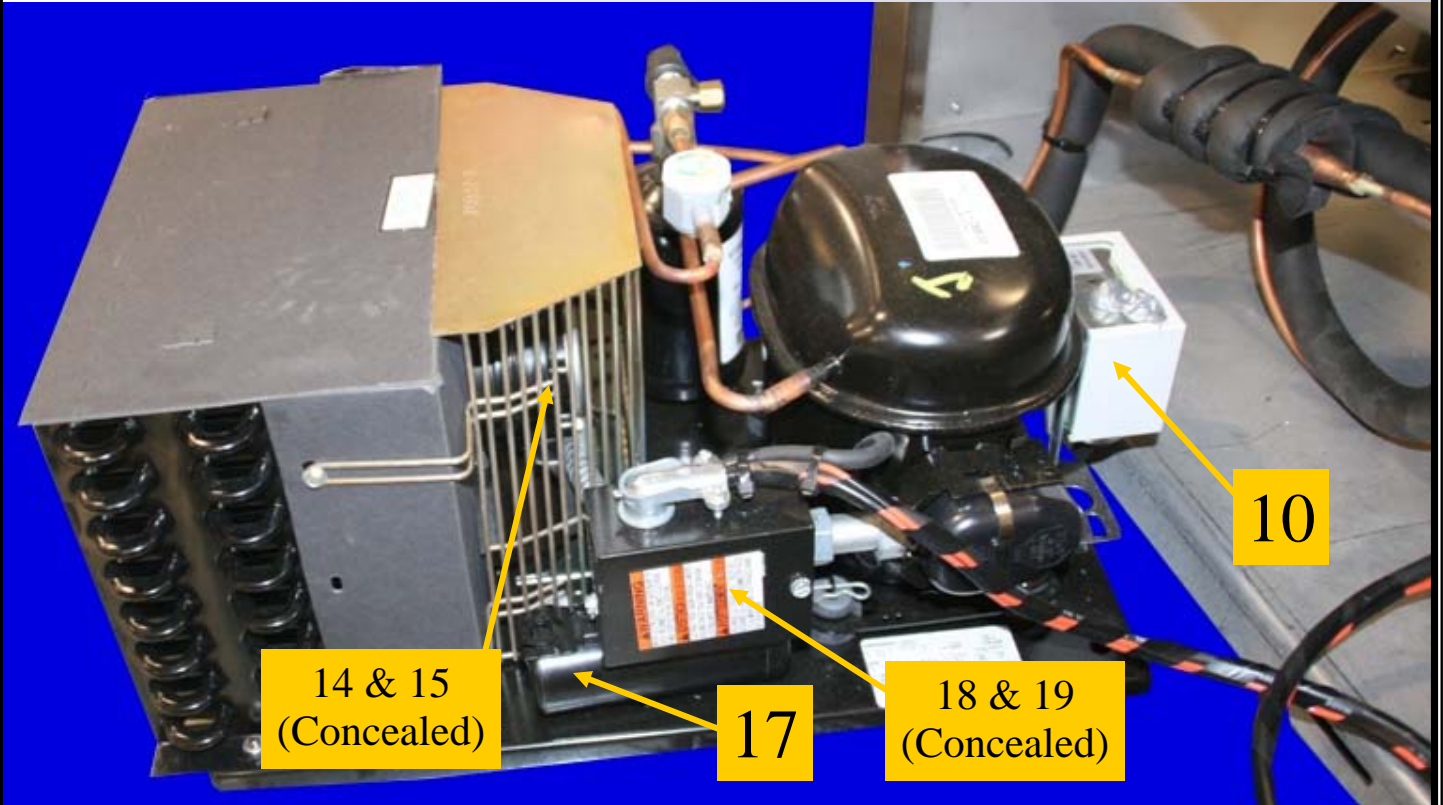


Illustration 7.A

Illustration 7.B



# Illustrations 7.C, 7.D, 7.E – RWE010-PM, Evaporator Coil Assembly ( 1 )

Illustration 7.C

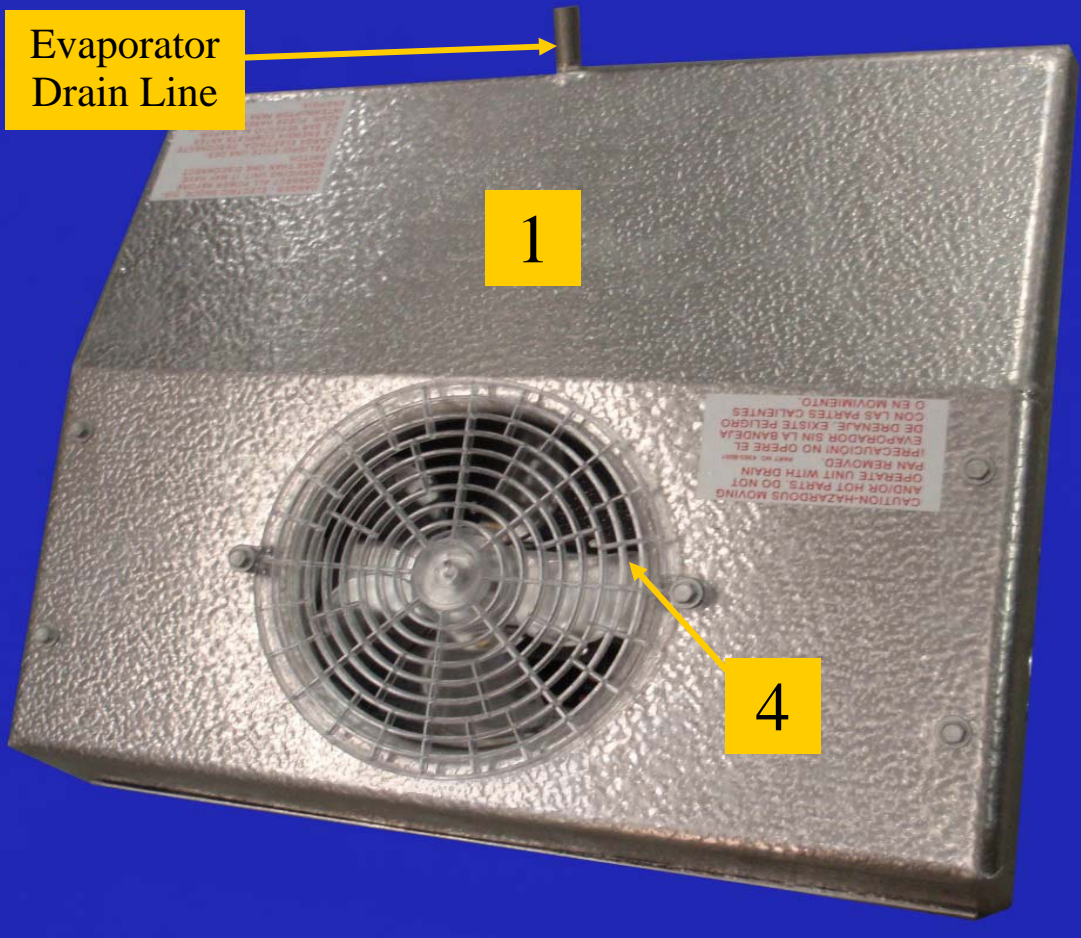


Illustration 7.D

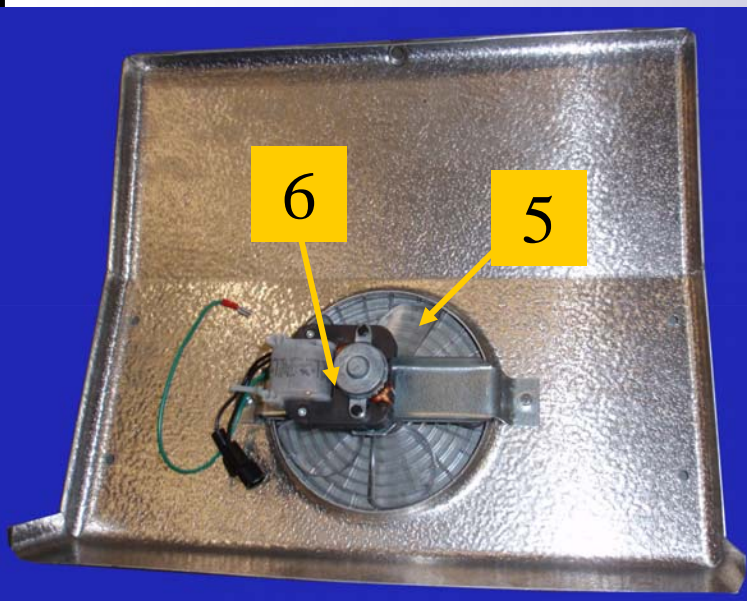
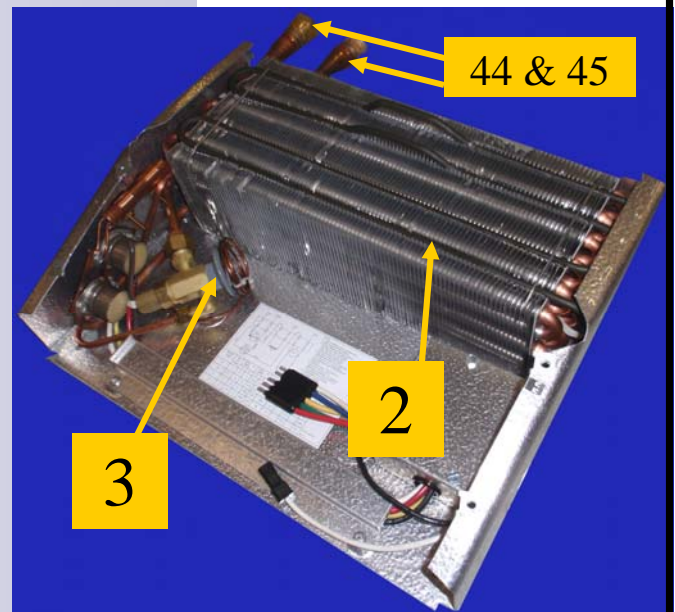


Illustration 7.E



## Illustration 7.F – Lower Compartment Detail

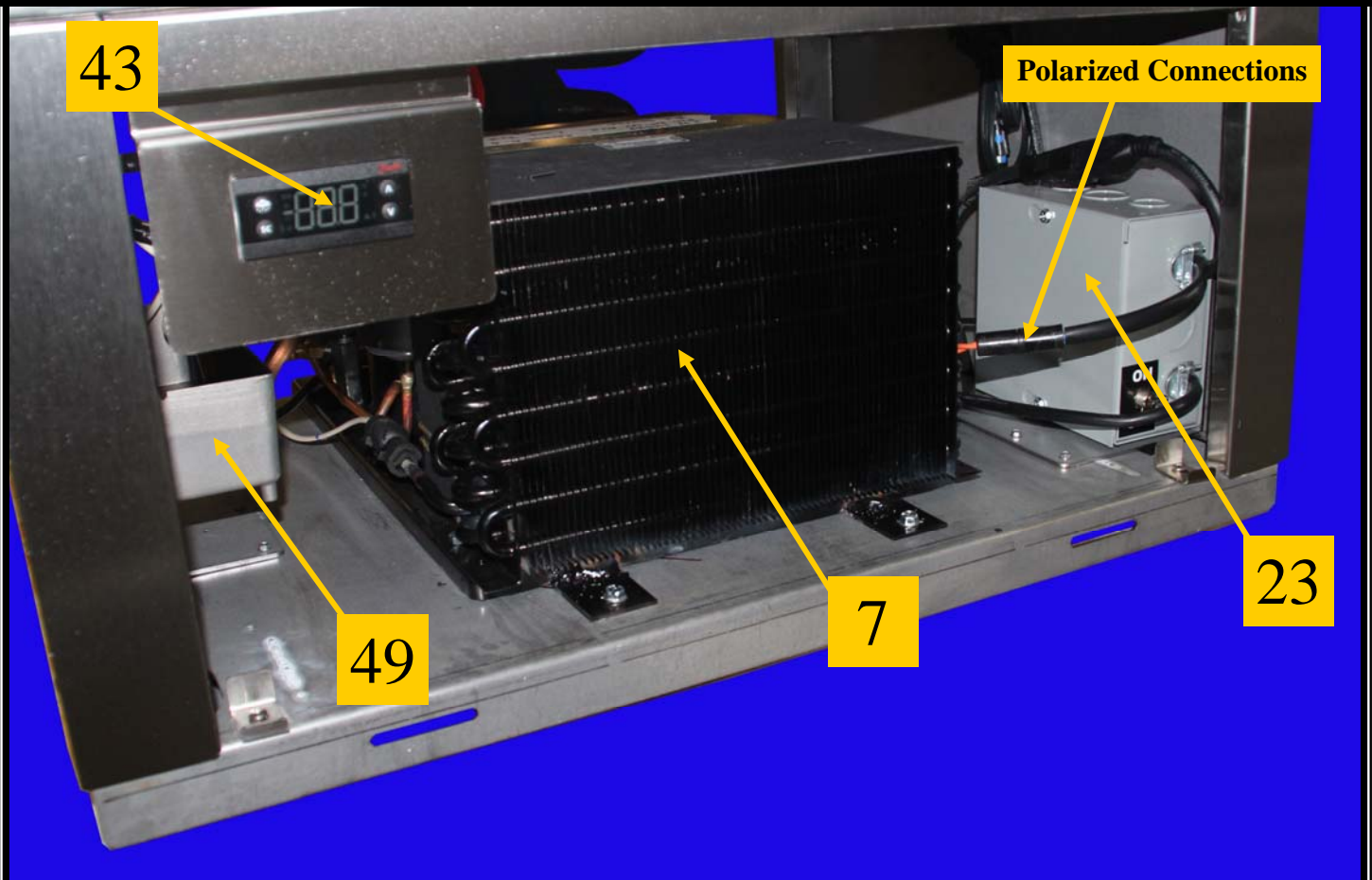


Illustration 7.F

Illustrations 7.G, 7.H— RWTT65-PM(L), Electronic Controller Assembly ( 23 )



Illustration 7.G

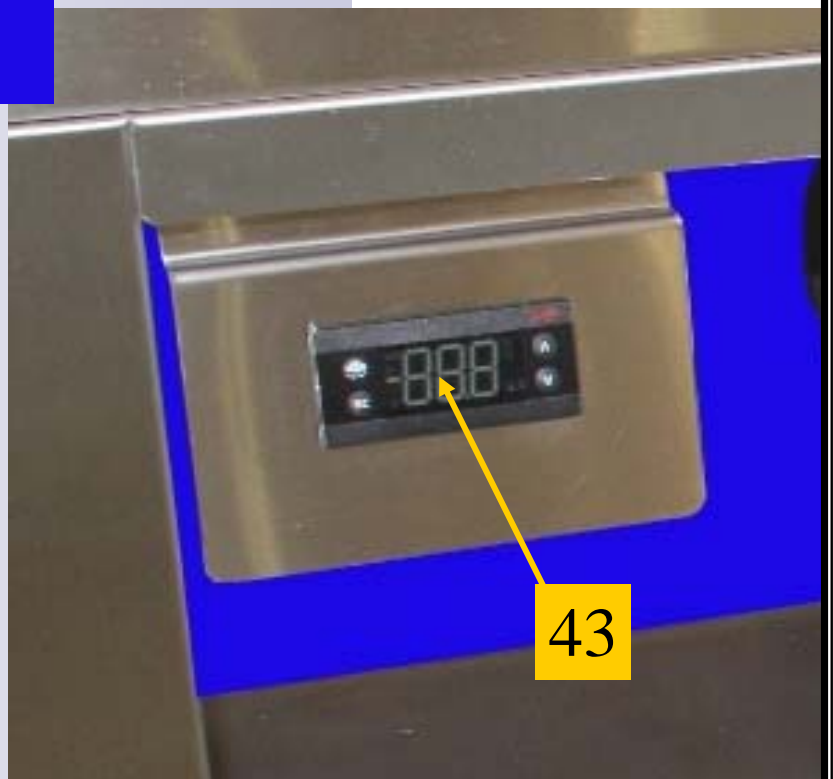


Illustration 7.H

# Illustrations 7.I, 7.J, 7.K, 7.L – Door Detail

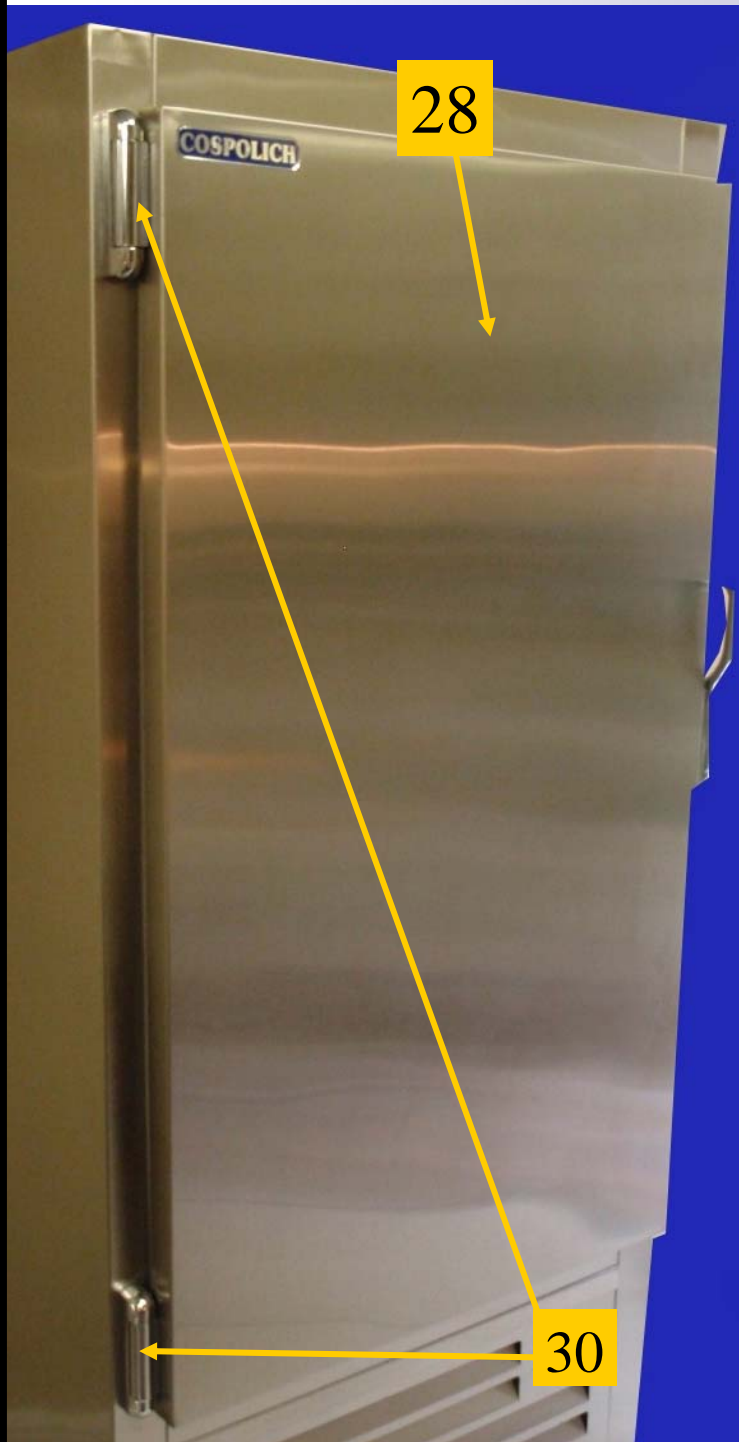


Illustration 7.I

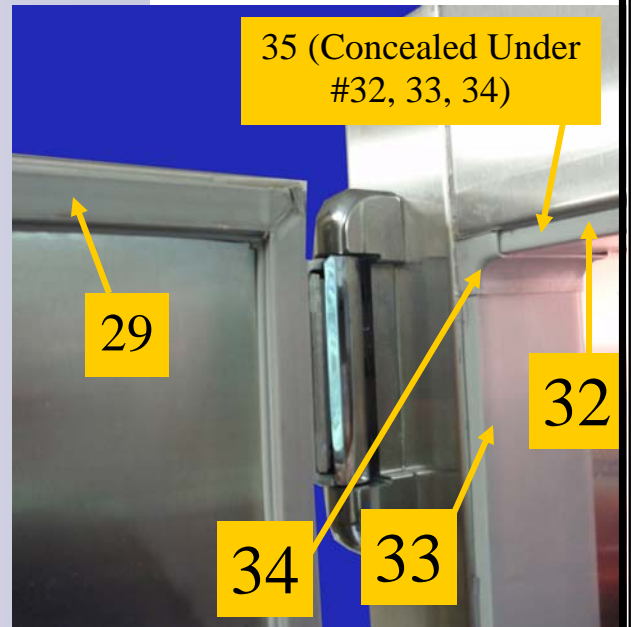


Illustration 7.J



Illustration 7.K



Illustration 7.L

## Illustration 7.M – Interior Detail

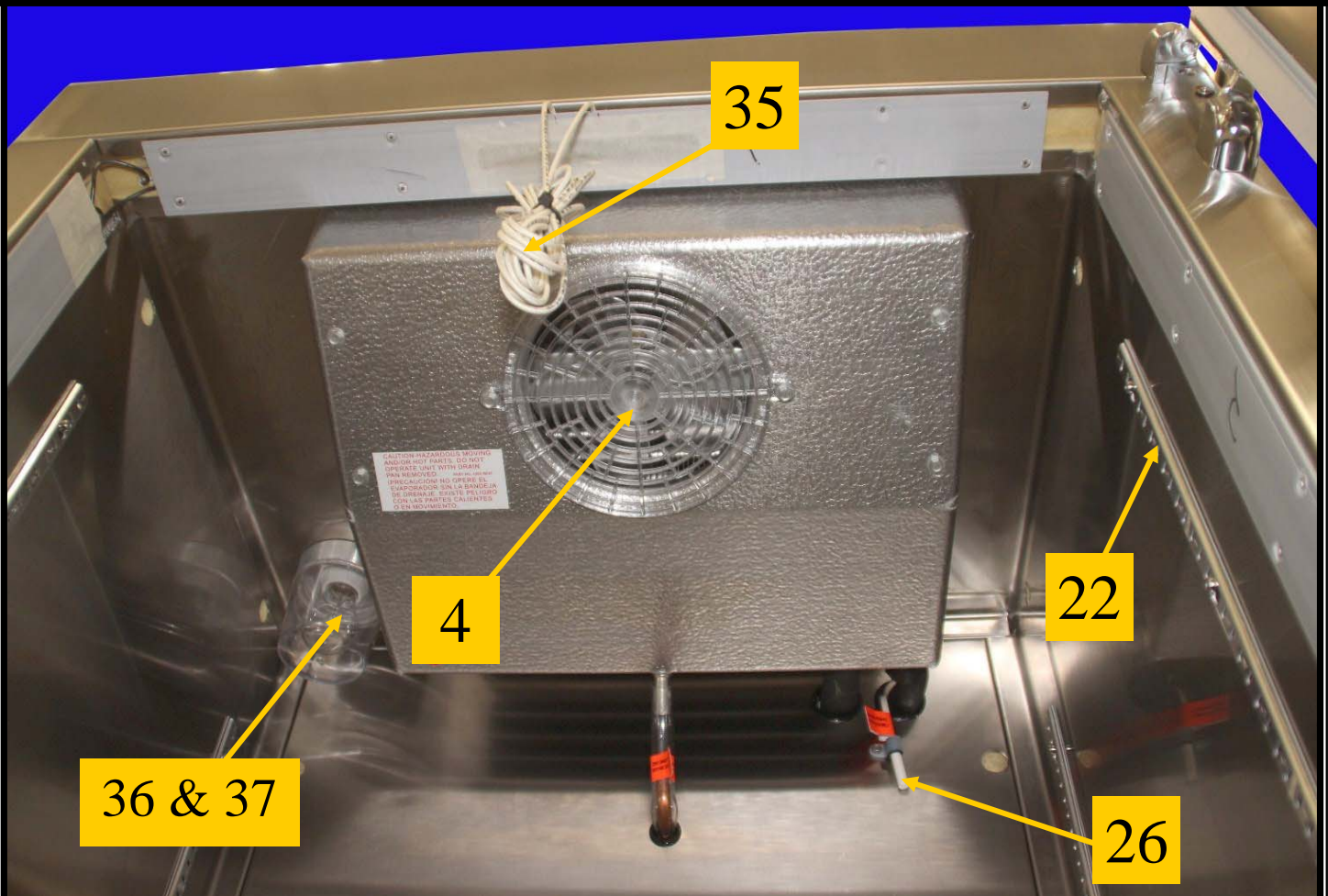


Illustration 7.M

# Illustrations 7.N, 7.O, 7.P—Main Unit Front/Rear Detail & Accessories



Illustration  
7.N



Illustration  
7.O

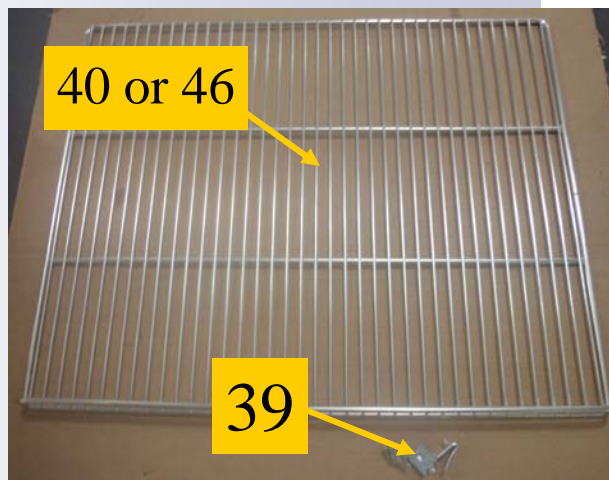


Illustration  
7.P

# Chapter 8 – Installation

## **8.1 Unpacking**

**Note:** Before unpacking unit, note any crating markings and check for damage to crating and notify the carrier if there should appear to be damage to the equipment.

The unit is shipped from the factory securely fastened to a single shipping pallet protected by an external wrapping.

1. Carefully remove all external wrappings and other protective coverings.
2. Review the installation section of the manual completely prior to installing.
3. Discard crating materials.

## **8.2 Installation**

1. Before moving the unit to the installation site, double-check passageways to make certain that it will move through without modifications.

**Note:** in certain instances, it may be necessary to remove the doors and hardware to negotiate tight spaces.

2. On most shipboard applications, a permanent base is fabricated by the ship builder to accommodate the base frame of the unit. If required Cospolich can furnish a foundation which can be attached to the deck. **Note:** *Not required on units with legs*
3. Once the cabinet has been attached to the ship's foundation, it is necessary to apply a silicone sealant around the complete perimeter at the point that the cabinet base contacts the foundation. **Note:** *Not required on units with legs*
4. Position the unit to allow sufficient ventilation, usually leave a 3" clearance from adjacent bulkheads and other equipment.
5. Level the cabinet from front to back and from side to side. This is important so that when securing to the deck base, the cabinet will not be pulled out of square.
6. Before applying electrical power to the unit, you should first check the electrical characteristics of the appliance and make certain that they agree with those of the electrical supply source. **CAUTION: LOW OR EXCESSIVE VOLTAGE CAN SEVERELY DAMAGE THE ELECTRICAL SYSTEM.**



# Chapter 9 – Modular Installation

## **9.1 Introduction**

By design the modular version of the R10-2M-SN(L)-MLR Refrigerator has been engineered and manufactured to be disassembled and reassembled aboard ship. By following these instructions you can be guaranteed a successful installation. Should questions arise or assistance become necessary, please call Cospolich customer service at (800) 423-7761 or (985) 725-0222. Email at Cospolich@cospolich.com.

## **9.2 Installation Skill Level**

In general, the skill level of the installer should be of a journeyman class in the area of mechanic. The primary process will require the following written instructions, use of common tools, and the proper fitting and alignment of the components. The electrical portion of the installation will be minimal, only requiring the unit to be plugged in and all electrical voltages verified.

## **9.3 Tools**

A special wrench was furnished with the cabinet which is needed to operate the camlocks used in the assembly of the equipment. Other common tools required are standard/Phillips screwdrivers and wrenches. If the equipment is to be attached to a foundation, it may be necessary to drill holes.

## **9.4 Primary Components**

Bottom with Condensing Unit/Controls Compartment/Base, Left End, Right End, Back, Top, Evaporator Coil Assembly, Condensing Unit Assembly, Electronic Controller Assembly, Front Door

## **9.5 Disassembly**

1. Remove 6 ea screws holding the 2 ea hinges onto the cabinet. Remove the door.
2. On the interior of the unit, remove the screws holding the evaporator coil drain line cover in place, then remove the stainless steel drain line cover.

## Chapter 9 – Modular Installation

3. Remove the 4 ea screws holding the exterior housing cover in place on the evaporator coil assembly. Remove the outer evaporator coil housing cover.
4. Remove the cabinet sensor bulb from the rear wall/back of the unit.
5. Disconnect the modular quick connect refrigeration fittings to the evaporator coil assembly.
6. Loosen/remove the 2 ea screws holding the rear of the evaporator coil assembly to the top of the unit. Loosen/remove the 3 ea zip screws holding the front of the evaporator coil assembly to the top of the unit. Remove the evaporator coil assembly.
7. Remove the 2 ea rear tubing covers on the exterior back of the cabinet.
8. Pull/remove the cabinet sensor bulb and cover through the refrigeration holes to the exterior back of the cabinet.
9. Remove the front louvered grill.
10. Unbolt the 2 ea bolts to the condensing unit assembly using a 3/8" nut driver. Slide out the condensing unit assembly. Disconnect both the electrical and refrigeration quick connect fittings. Remove the condensing unit assembly.
11. Disconnect all polarized connections at the electronic controller assembly adjacent to the condensing unit assembly. **NOTE:** *It is not necessary to remove the electronic controller assembly.*
12. Using the camlock wrench provided, loosen all perimeter camlocks around the top panel. Lift and remove the top panel.
13. Loosen all perimeter camlocks securing the left end panel. Remove the left end panel.
14. Loosen all perimeter camlocks securing the back/rear panel. Remove the back/rear panel.
15. Loosen all perimeter camlocks securing the right end panel. Remove the right end panel.

## Chapter 9 – Modular Installation

16. Reverse the process to properly assemble and install the unit.
17. During installation, prior to installation of the door, the anti-condensate perimeter mullion heater must be installed around the door perimeter adjacent to the primary breaker strips. The secondary breaker strips must then be installed over the primary breaker strips.

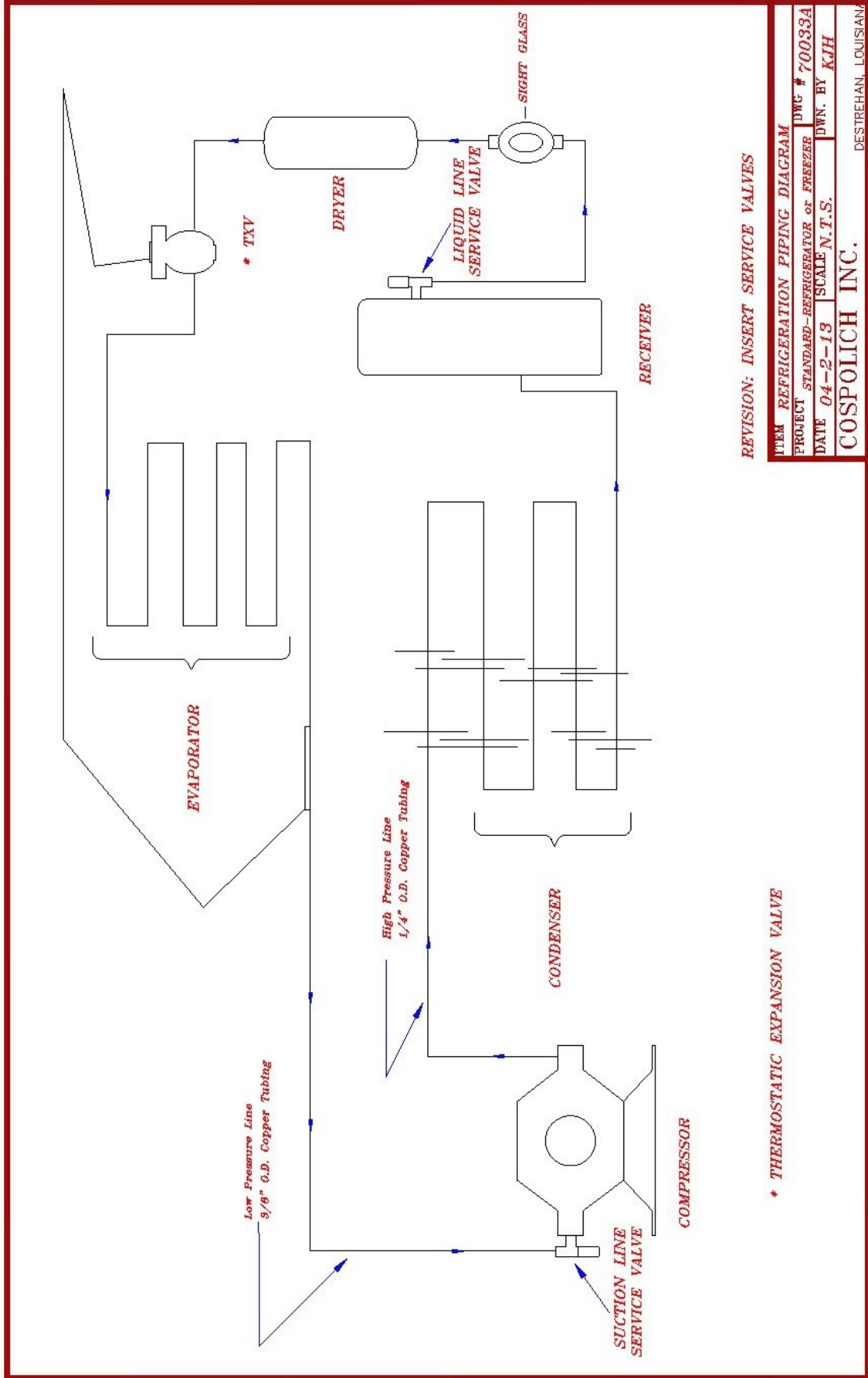
***NOTE:*** *When reassembling the unit on site, all panels must be sealed with beads of gray food-grade silicone (provided) in all female joints. This ensures a proper seal between panels and prevents air, heat, and liquid infiltration. Gray plugs must also be in place in all camlock holes when sealing the unit prior to initial use. A squirt of silicone in each camlock hole is also recommended for a proper seal. After all panels are assembled, silicone all interior and exterior seams for a final seal.*

# Chapter 10 – Electrical and Mechanical

## **10.1 Introduction**

This section of the manual contains drawings and schematics of the electrical and piping systems.

# Illustration 10.A – Mechanical Piping Diagram

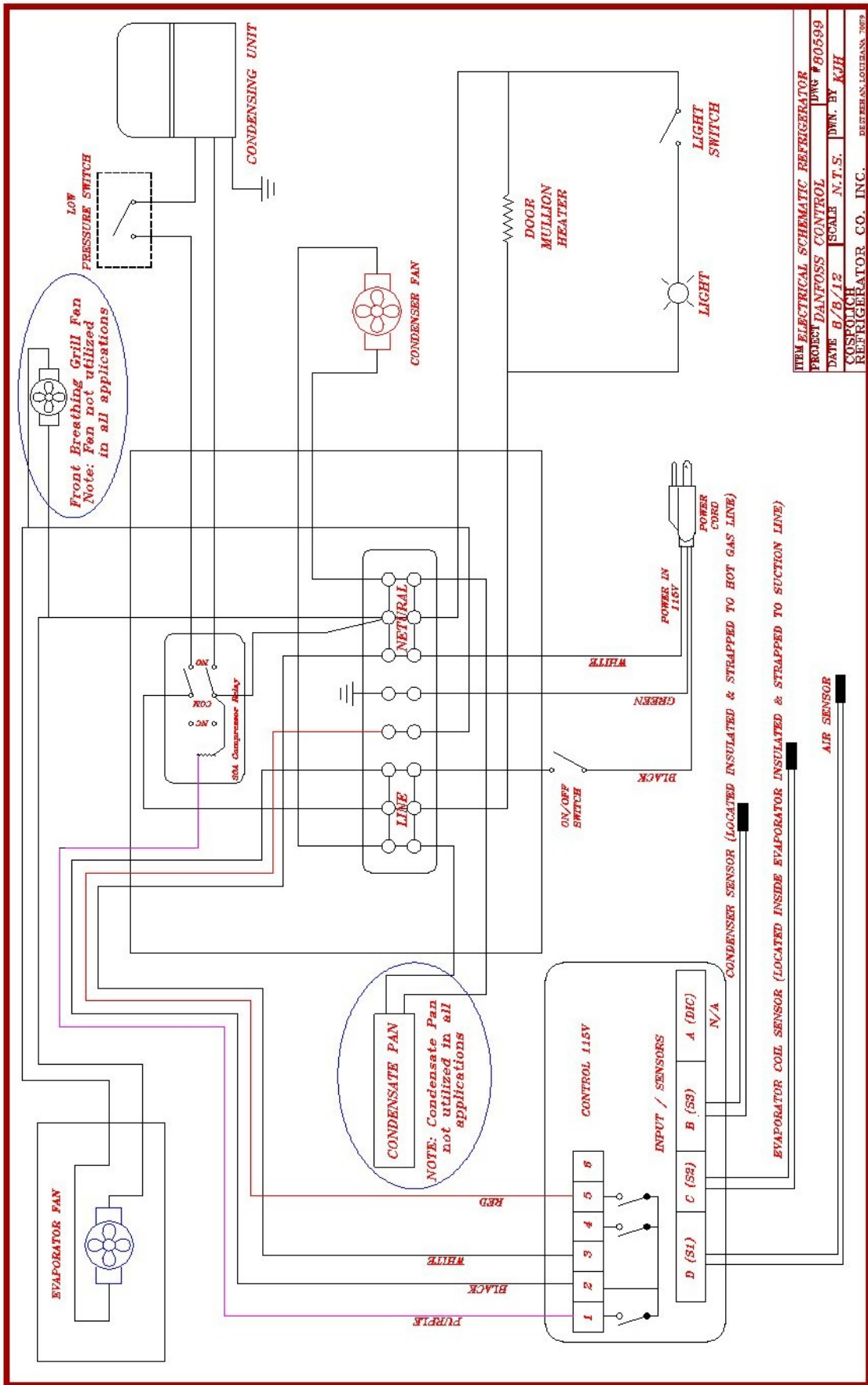


REVISION: INSERT SERVICE VALVES

ITEM	REFRIGERATION PIPING DIAGRAM	DWG #	70033A
PROJECT	STANDARD-FREEZER	DWN. BY	KJH
DATE	04-2-13	SCALE	N.T.S.
COSPOLICH INC.		DRETEHIAN, LOUISIANA	

\* THERMOSTATIC EXPANSION VALVE

# Illustration 10.B – Electrical Schematic (Electronic Controls)



IBM ELECTRICAL SCHEMATIC REFRIGERATOR  
 PROJECT DANFOSS CONTROL DWG #50599  
 DATE 8/8/12 SCALE N.T.S. DWN. BY KJH  
 COSPOUCH REFRIGERATOR CO. INC. BETHLEHEM, LOUISIANA, 70525

## Chapter 11 – Limited Warranty

Cospolich Inc. warrants their cabinets to consumers against defects in material or workmanship under normal use and service for a period of one year from the date of the shipment. We will repair or replace at our option, any part, assembly or portion thereof which Cospolich's examination discloses to be defective. Cospolich will pay the labor costs for the repair up to twelve (12) months from date of shipment.

In instances where the purchaser is not the owner in possession and the acceptance of Cospolich equipment is closely tied to the completion and delivery of the project, our warranty will begin on the acceptance date and will extend for one year.

### Terms

#### Exclusions

Cospolich's obligations under this warranty shall not extend to any malfunction or other problem caused by unreasonable use, such as but not limited to, improper setting of controls, improper installation, improper voltage supply, loose electrical connections or blown fuses, and damage not attributable to a defect in workmanship. This warranty shall not apply to any cabinet or component part that has been suspect to any accident, alteration, abuse, misuse to any damage caused in fire, flood, or other acts of God and to any product that has been serviced by an unauthorized service person or company.

#### To secure Warranty Service

If you claim a defect under this warranty, direct your claim to whom you purchased the product, giving model, serial and code numbers with a description of the problem. Telephone calls should be directed to the service department at (800) 423-7761 or (985)725-0222 with fax request going to (985) 725-1564.

If the above procedure fails to satisfy your claim, you may write directly to the following address including the above identifying information.

**DIRECTOR of CUSTOMER RELATIONS  
COSPOLICH INC.  
P.O. BOX 1206  
DESTREHAN, LA 70047**

There is not other express warranty on the Cospolich units except the terms stated herein. Any implied warrants of fitness and merchantability are limited in duration to the duration of this Warranty. The liabilities of Cospolich are limited solely and exclusively to replacement as stated herein and do not include any liability for any incidental, consequential or other damages of any kind whatsoever, whether any claim is based upon theories of contract negligence or tort. Some states do not allow limitations on how long an implied warranty lasts, or the exclusion of limitations of incidental or consequential damages. So the above limitations and exclusions may not apply to you. This warranty gives you specific legal rights and you may also have other rights that vary from state to state.





# Appendix 2 – General Arrangement Drawing

Approved By: _____ Date: _____ (Signature of Approving Authority)	Approved By: _____ Date: _____ (Signature of Approving Authority)
--	--

Approved By: _____ Date: _____ (Signature of Approving Authority)	Approved By: _____ Date: _____ (Signature of Approving Authority)
--	--

**COSPOLICH INC.**  
 NEW ORLEANS, LA.

**NEWPORT NEWS SHIPBUILDING**  
 NEWPORT NEWS, VA.

**DATE 08/31/18**  
**REVISION B**  
**61018**  
**CW**

## SHIPBOARD REFRIGERATOR R10-2M-SNL-MLR

- NOTES —**
1. : DENOTES CENTER OF GRAVITY
  2. WET WEIGHT: 330 lbs.
  3. DRY WEIGHT: 325 lbs.
  4. REFRIGERANT: R-404A ; CHARGE: 16 oz.
  5. ELECTRICAL: 115V, 6 AMPS
  6. MOTOR: 1/4 HP.
  7. PARTS TO BE PROVIDED WITH PROVISIONS FOR PABLOGGING.

DATA PLATE DETAIL	
<b>COSPOLICH</b> 1000 Poydras Street, Suite 1000 New Orleans, LA 70112 Phone: (504) 581-1000 Fax: (504) 581-1001 Email: info@cospolich.com Website: www.cospolich.com	Part No: _____ Rev: _____ Date: _____ Qty: _____ Unit: _____ Material: _____ Finish: _____ Notes: _____ Approved By: _____ Date: _____

ITEM #	QTY	ITEM	MFG	FSOM	OEM	SPEC
1	1	CABINET EXT	CO5P	66882	20 GA. S/S	ASTMA A167
2	1	CABINET INT	CO5P	66882	22 GA. S/S	ASTMA A167
3	1	BASE FRAME	CO5P	66882	S/S	
4	1	Door	CO5P	66882	MOR666	ASTMA A167
5	2	HINGE	WASON	32761	21700008	
6	1	LATCH	WASON	32761	1728C	
7	1	GASKET	CO5P	66882	CR60M4	
8	2	GRILL	CO5P	66882	20 ga. S/S	ASTMA A167
9	1	REFRACER	CO5P	66882		
10	1	DRAIN	CO5P	66882		
11	1	COND. UNIT	TCUMSEN	50431	6688230002	
12	1	COMPRESSOR	TCUMSEN	50431	6688230002	
13	1	FAN	TCUMSEN	50431	51551-A	
14	1	MOTOR (FAN)	TCUMSEN	50431	50080	
15	1	RECEIVER	TCUMSEN	50431	50080	
16	1	CAPACITOR	TCUMSEN	50431	887518522	
17	1	RELAY	TCUMSEN	50431	50080	
18	1	CUPPL	TCUMSEN	50431	50080	
19	1	SOFT GLASS	WATGEC	17929	24-1/2	
20	1	DRIVER	SPORAN	78482	CO2S	
21	1	SWITCH (PWR)	TCUMSEN	50431	50080	
22	1	SWITCH (PWR)	TCUMSEN	50431	50080	
23	1	SWITCH (PWR)	TCUMSEN	50431	50080	
24	1	SWITCH (PWR)	TCUMSEN	50431	50080	
25	1	SWITCH (PWR)	TCUMSEN	50431	50080	
26	1	SWITCH (PWR)	TCUMSEN	50431	50080	
27	1	SWITCH (PWR)	TCUMSEN	50431	50080	
28	1	SWITCH (PWR)	TCUMSEN	50431	50080	
29	1	SWITCH (PWR)	TCUMSEN	50431	50080	
30	1	SWITCH (PWR)	TCUMSEN	50431	50080	
31	1	SWITCH (PWR)	TCUMSEN	50431	50080	

